



**5 Beds**

**4.5 Baths**

**6150 Sq Ft**

**ADDRESS**

15804 VENICE RD  
 AQUASCO, MD 20608

Indulge in luxury living with our Kingsport II floorplan at Cedar Farms! This home boasts a distinguished brick front elevation and a convenient two-car side-load garage. Step inside to discover a world of elegance, starting with the oak staircase that greets you upon entry. The foyer seamlessly leads to the open living room and formal dining area. Journey further into the heart of the home to uncover the deluxe gourmet kitchen, a haven for any chef. Equipped with upgraded stainless steel appliances, a farmhouse sink, butler's pantry, and expansive island, this kitchen utilizes both practicality and style. Bask in the glow of natural light streaming in from the morning room extension, creating a great source of natural lighting. After your culinary adventures, retreat to the two-story great room, where a cozy gas fireplace invites you to unwind.

Upstairs, the luxurious owner's suite awaits, featuring a tray ceiling, indulgent Caribbean bath, and spacious walk-in closet. Three additional bedrooms, two full bathrooms, and a laundry room complete this level. Venture into the basement to discover a wealth of additional amenities, including a recreation room, theater room, game room, den, and an additional bedroom with a full bathroom. Don't miss your opportunity to experience ...

## Home Elevation



## FIRST FLOOR



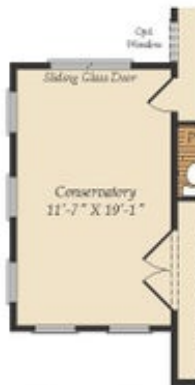
OPT. SCREENED PORCH



OPT. MORNING ROOM  
(Shown with Opt. Deluxe Kitchen)



OPT. IN-LAW SUITE



OPT. CONSERVATORY



## SECOND FLOOR



OPT. BUDDY BATH



OPT. 3RD BATH



OPT. CALIFORNIA BATH



OPT. CONSERVATORY BELOW

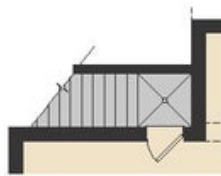


OPT. CARIBBEAN BATH

Brick/stone fronts, chimneys, bay windows, keystones, exterior trim, garage doors, light fixtures, dormers, and gables shown on elevations are optional features. Actual product specifications may vary in dimension or detail from these drawings. This insert is for illustrative purposes only and is not part of the legal contract. All dimensions are approximate. Many available options are not shown.



## BASEMENT



OPT. SINGLE AREAWAY



OPT. DOUBLE AREAWAY

