



Single Family

VIP Price

\$1,524,850

7 Beds

5.5 Baths

5500 Sq Ft

ADDRESS

4 HIDDEN WATERS WAY - HOMESITE 1
 PIKESVILLE, MD 21208

[CLICK HERE](#) to experience a 3D Tour of this stunning home.

The breathtaking Annapolis model home is now available at the Court of Hidden Waters! This builder's model contains a generous 5,500 square feet of living space filled with luxury. The home comes standard with a 2-car garage and beautiful craftsman style elevation.

The main level features 10' ceilings, a foyer with a formal dining room and library/home office at the front of the home. The rear of the home has an open format with a large great room with plenty of natural light, a modern gas fireplace, gorgeous coffered ceiling and a 12' slider that opens to a fabulous screened-in porch. The great room flows right into an upgraded chef's kitchen, containing a myriad of features such as a walk-in pantry, butlers pantry, quartz countertops, backsplash, farmhouse sink, GE Monogram appliances, and large central waterfall island. The adjacent morning room boasts a 2-sided fireplace that is shared with the screened-in porch. This level also includes a mud room, powder room and a in-law suite with full bathroom.

The second level offers 5 bedrooms and three full baths. The owner's suite includes two huge walk-in closets ...

FIRST FLOOR



OPT. SCREENED PORCH



OPT. MORNING ROOM



OPT. IN-LAW SUITE



OPT. 2-CAR SIDE LOAD

Opt. 3-Car Side Load Garage
20'1" x 20'1"

Opt. 3-Car Side Load Garage
22'0" x 19'1"

SECOND FLOOR

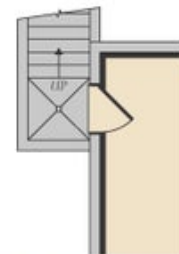
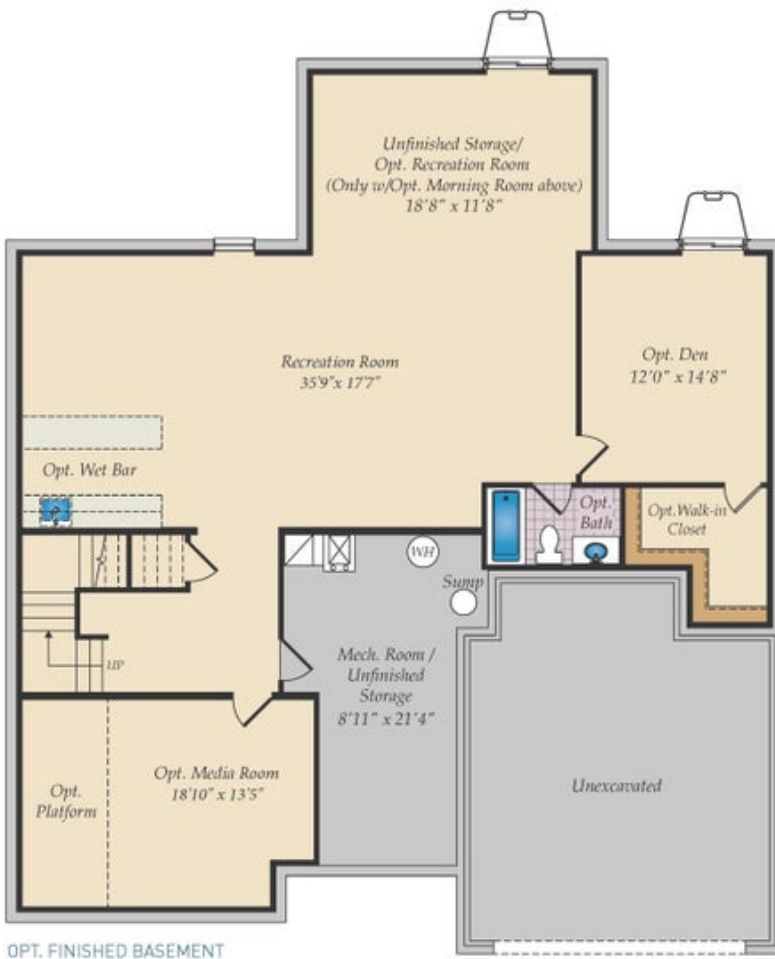


OPT. BEDROOM 5

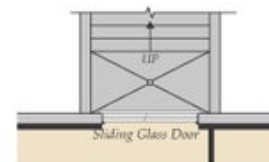


OPT. DELUXE OWNER'S BATH

BASEMENT



OPT. SINGLE AREAWAY



OPT. DOUBLE AREAWAY



OPT. WALKOUT