



Single Family

4 Beds

2.5 Baths

1,785 Sq Ft

COMMUNITY CONTACT

28107 MARTHA QUAN ROAD
SEAFORD, DE 19973

NONE

NONE

The Honor floor plan welcomes you with a covered entry/porch area and a 2-car garage. The U-shaped kitchen offers a long breakfast bar and opens to a dining area and spacious family room. The first floor owner suite has a large ensuite bath with shower and huge walk-in closet. A powder room and laundry room are also on the main level. Upstairs are three additional bedrooms, a hall bath and large linen closet.

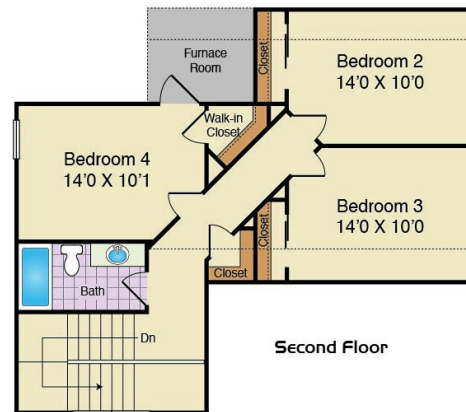
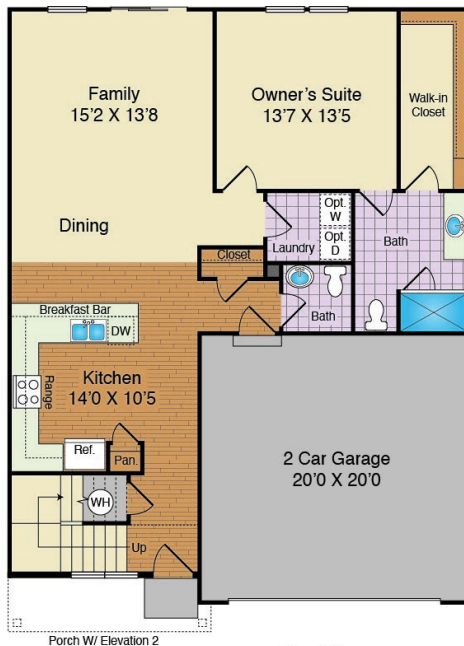
Available Elevations



Elevation 1



Elevation 2



These floor plan and elevations are illustrations of an artist's conception of the home and may vary in detail from specifications and/or the actual home and may be shown with options. Variations may occur due to such reasons as, but no limited to, changes made during construction process, availability of materials, our continued improvement process, etc. Room dimensions and square footage are approximate. There may be many other available options not shown. This document is for illustrative purposes only and is not part of a legal contract. 5-20-24