



3 Beds

2 Baths

1,300 Sq Ft

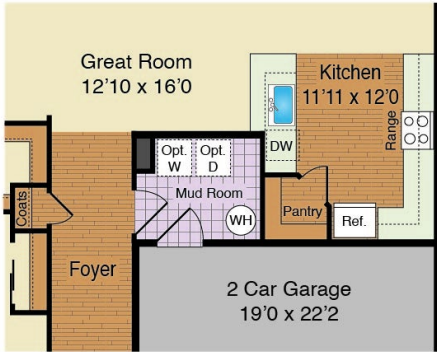
The Acclaim offers convenient single-level living with an open main living area and three bedrooms. The living area offers plentiful space for entertaining with a well-designed great room and dining area, a designer kitchen with breakfast bar and a large pantry for extra storage. The owner's suite includes an ensuite bath with a spacious shower and walk-in closet. A full bath is located off the main hallway and conveniently services the secondary bedrooms. This home also features a spacious two-car garage plus many more standard features.

Available Elevations

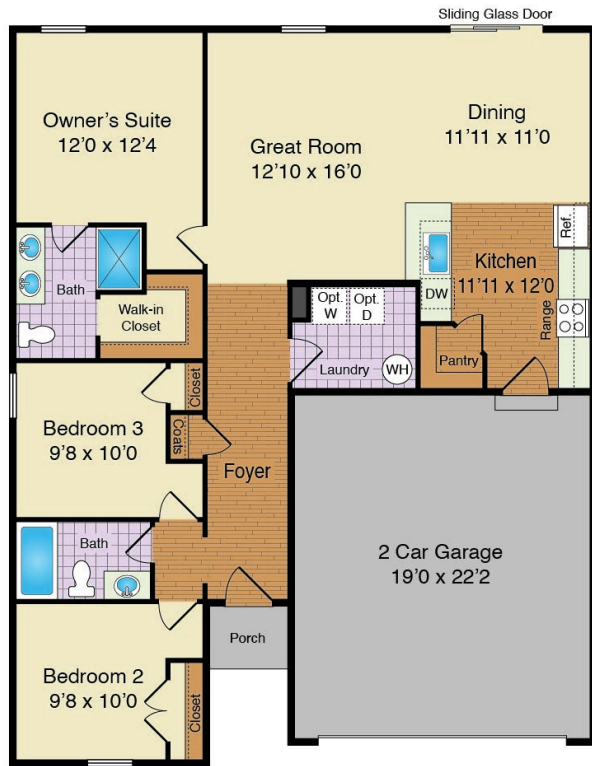




Kitchen / Mud Room Layout



First Floor



These floor plan and elevations are illustrations of an artist's conception of the home and may vary in detail from specifications and/or the actual home and may be shown with options. Variations may occur due to such reasons as, but no limited to, changes made during construction process, availability of materials, our continued improvement process, etc. Room dimensions and square footage are approximate. There may be many other available options not shown. This document is for illustrative purposes only and is not part of a legal contract. 3-8-24