



**5 - 7 Beds**

**5.5 - 7 Baths**

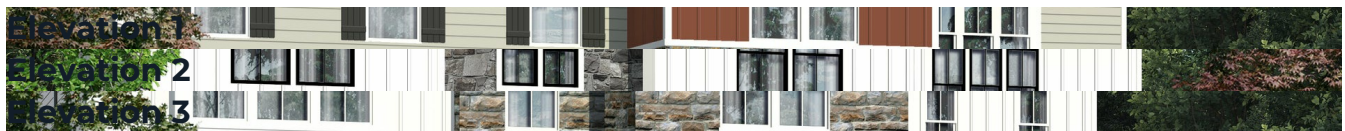
**5,520 - 8,536 Sq Ft**

Introducing our newest estate plan, the Aspen Craftsman. This stunning home offers luxurious living on a grand scale. With up to 8,536 square feet of living space and up to 7 bedrooms, this home has everything you could want for your entire family, including options to make this a multi-generational home.

The home offers fabulous curb-appeal with a large covered porch, perfect for relaxing and enjoying the outdoors, and options for a 2-car or 3-car garage. Inside, you'll find a spacious open floor plan with a two-story great room open to a gorgeous kitchen with a huge center island for entertaining. The included 1st floor in-law suite provides a comfortable space for guests or family members. A 1st floor extension offers a true multi-generational living space with a separate entrance, living area, bedroom and bath for added privacy.

Upstairs features an open loft area for lounging and four bedrooms, each with a private bath and walk-in closet. The owner's suite is a true retreat with the option to upgrade to a luxurious deluxe bath with walk-thru shower.

## Available Elevations



Brick/stone fronts, chimneys, bay windows, keystones, exterior trim, garage doors, light fixtures, dormers, and gables shown on elevations are optional features. Actual product specifications may vary in dimension or detail from these drawings. This insert is for illustrative purposes only and is not part of the legal contract. All dimensions are approximate. Many available options are not shown.

