



**4 - 6 Beds**

**2.5 - 4 Baths**

**3,548 - 5,600 Sq Ft**

The Avenel is one of our most popular plans, perfect for a growing family. This home has fabulous curb appeal with craftsman-style elevations, a front porch and a two- or three-car garage. Enter into a breathtaking two-story foyer with a Juliet balcony and dual staircase, flanked by a formal living room and dining room. The expansive two-story family room is open to the breakfast area and kitchen--great for entertaining or just spending family time. The chef in the family will appreciate the gourmet kitchen with large island, walk-in pantry and optional morning room. A home office is perfect for those who work from home. Upstairs, the large owners suite is a true sanctuary with a spa bath and large walk-in closet. Three additional bedrooms, a hall bath and convenient laundry room complete this floor. There are many options to configure this home to meet your needs. Popular upgrades include a main level in-law or guest suite, a conservatory, a screened porch, a game room, California Super Bath, a finished basement, an attic loft, and much more!

## Available Elevations



FIRST FLOOR



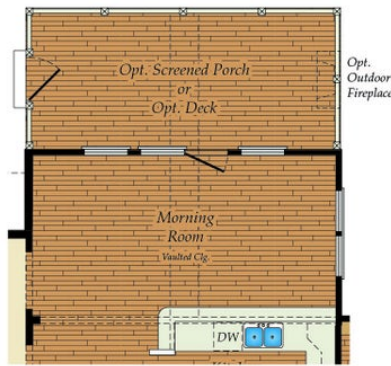
OPT. CONSERVATORY



OPT. FIRST FLOOR FULL BATH



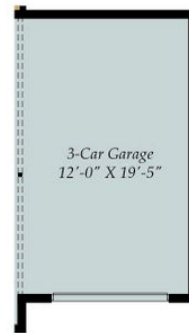
FIRST FLOOR STAIRS W/OPT. BASEMENT



OPT. MORNING ROOM AND OPT. SCREEN PORCH



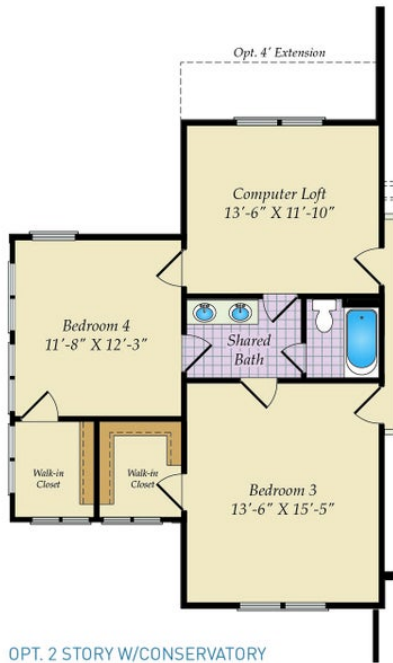
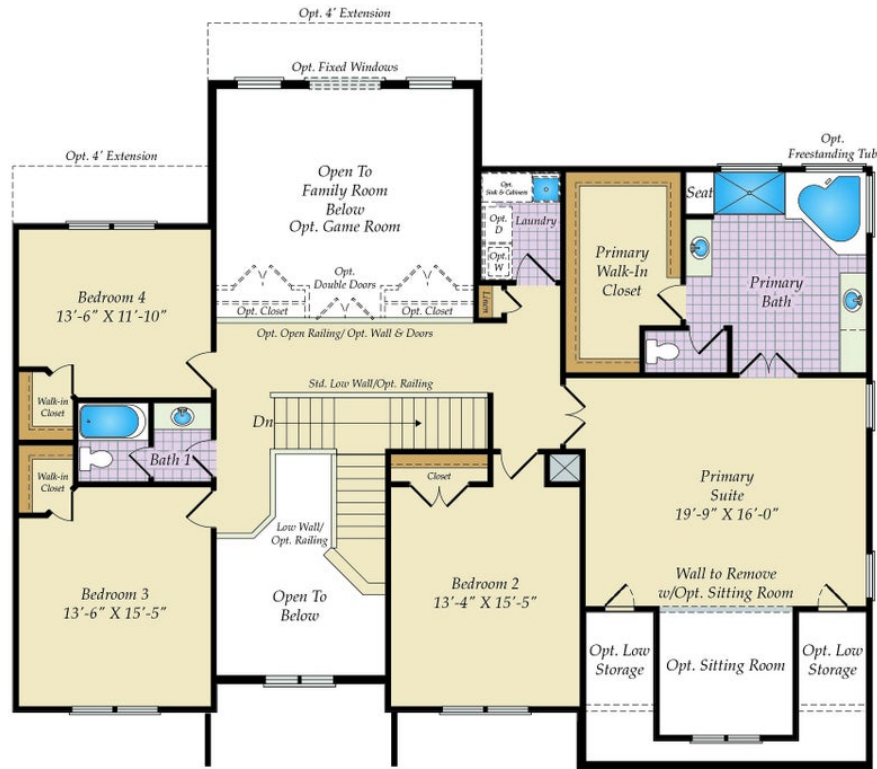
OPT. SIDE LOAD 3 CAR GARAGE



OPT. FRONT LOAD 3 CAR GARAGE

Brick/stone fronts, chimneys, bay windows, keystones, exterior trim, garage doors, light fixtures, dormers, and gables shown on elevations are optional features. Actual product specifications may vary in dimension or detail from these drawings. This insert is for illustrative purposes only and is not part of the legal contract. All dimensions are approximate. Many available options are not shown.

SECOND FLOOR



OPT. 2 STORY W/CONSERVATORY



OPT. BATH 3 AT BEDROOM 2

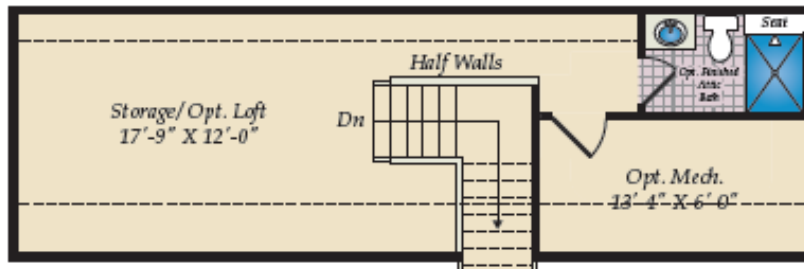


OPT. CALIFORNIA SUPER BATH

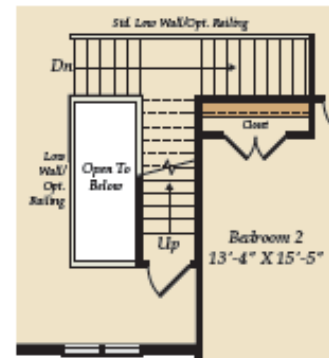
# OPT. BASEMENT AND MORE OPTIONS



OPT. BASEMENT W/OPT. DEN & OPT. HOBBY ROOM



OPT. ATTIC LOFT



SECOND FLOOR STAIRS W/ ATTIC