

**4 - 5 Beds****2.5 - 4 Baths****2,215 - 3,387 Sq Ft**

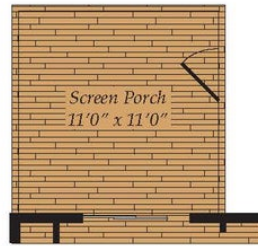
Open 4 bedroom floor plan with optional In-Law suite downstairs! The first floor features a dining room with optional tray ceiling and owner's choice room. It has a convenient open concept connecting the spacious kitchen, breakfast and great room. The kitchen includes a large island, kitchen backsplash and stainless steel appliances. The great room has an optional tray ceiling and optional fireplace. Other great options include a morning room, screen porch and in-law suite. The owner's suite, three additional bedrooms and laundry room are all on the second floor. You can add a tray ceiling and super bath in the owner's suite. Need a bit more room? Add the third floor loft with full bathroom!

Available Elevations

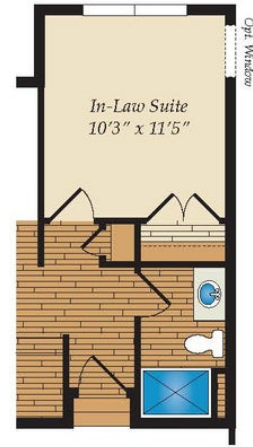




Opt. Morning Room



Opt. Screen Porch

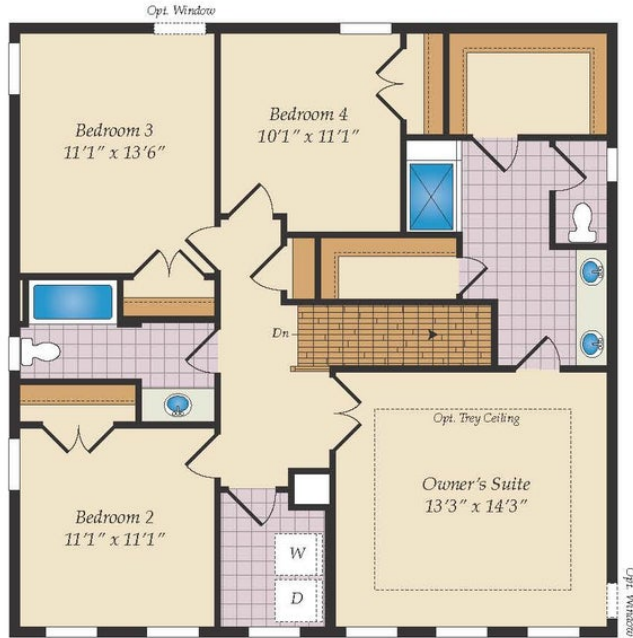


Opt. In-Law Suite

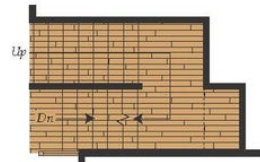


First Floor

Brick/stone fronts, chimneys, bay windows, keystones, exterior trim, garage doors, light fixtures, dormers, and gables shown on elevations are optional features. Actual product specifications may vary in dimension or detail from these drawings. This insert is for illustrative purposes only and is not part of the legal contract. All dimensions are approximate. Many available options are not shown.



Second Floor



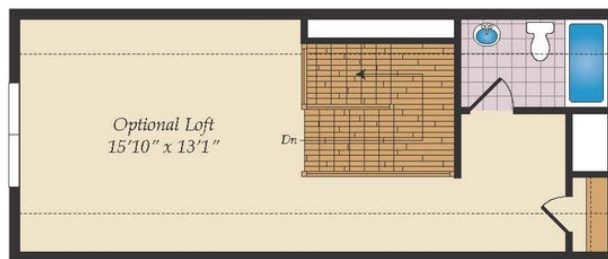
Opt. Stairs w/ Opt. Loft



Opt. Super Bath



Opt. Super Bath w/ Loft



Opt. Third Floor Loft