



4 - 5 Beds

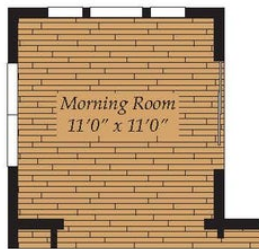
2.5 - 4 Baths

2,215 - 3,387 Sq Ft

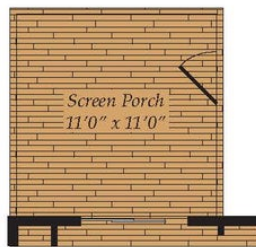
Open 4 bedroom floor plan with optional In-Law suite downstairs! Enjoy this open concept with a large great room that flows right into the kitchen which offers a large center island and plenty counter space for entertaining friends and family. Also enjoy your own dining room that leads to the kitchen right off of the huge open foyer! Upstairs boast 3 bedrooms and also the master suite as well.

Available Elevations

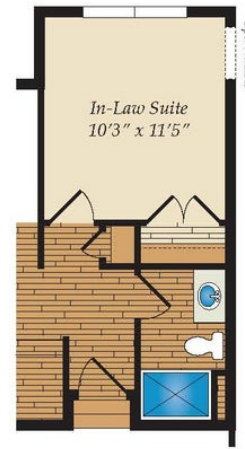




Opt. Morning Room



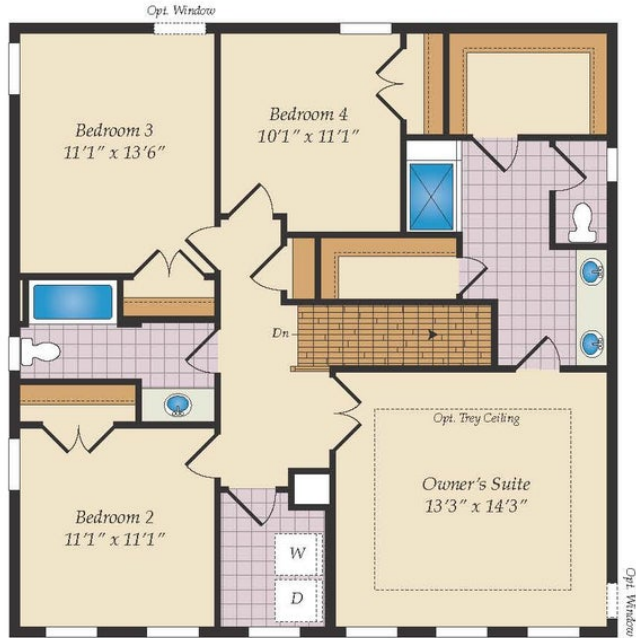
Opt. Screen Porch



Opt. In-Law Suite



First Floor



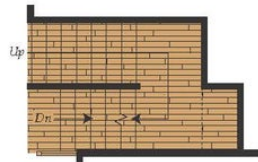
Second Floor



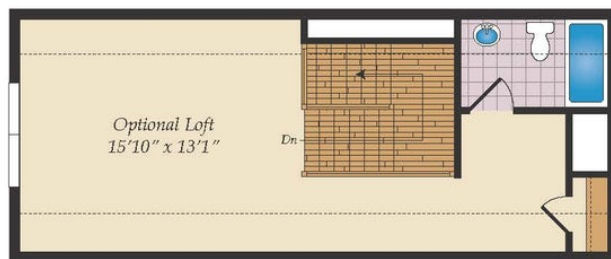
Opt. Super Bath



Opt. Super Bath w/ Loft



Opt. Stairs w/ Opt. Loft



Opt. Third Floor Loft