



**3 - 5 Beds**

**2.5 - 3.5 Baths**

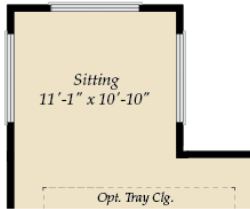
**2,372 - 6,006 Sq Ft**

The Baywood plan is a single family ranch style home and features the highly sought after first floor owner's suite starting at 2,372 sq. ft. with the capability of up to 6,006 sq. ft. and up to 5 bedrooms. Enjoy one-level living, or add a second floor for additional space. Choose from hundreds of luxury options and finishes to design your dream...screened porch, gourmet kitchen, stone or modern fireplaces, 2nd floor loft, spa baths, and basements made for entertaining with theater room, wet bar and much more! Some photos have been virtually staged to better showcase the true potential of rooms and spaces in the home.

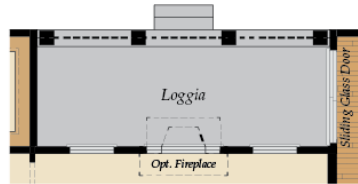
## Available Elevations



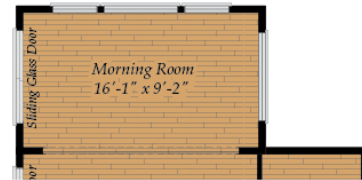
# FIRST FLOOR



OPT. SITTING ROOM AT  
OWNER'S SUITE



OPT. LOGGIA  
(Available only with  
Opt. Extended Breakfast)



OPT. MORNING ROOM  
(Available only with  
Opt. Extended Breakfast)



Brick/stone fronts, chimneys, bay windows, keystones, exterior trim, garage doors, light fixtures, dormers, and gables shown on elevations are optional features. Actual product specifications may vary in dimension or detail from these drawings. This insert is for illustrative purposes only and is not part of the legal contract. All dimensions are approximate. Many available options are not shown.

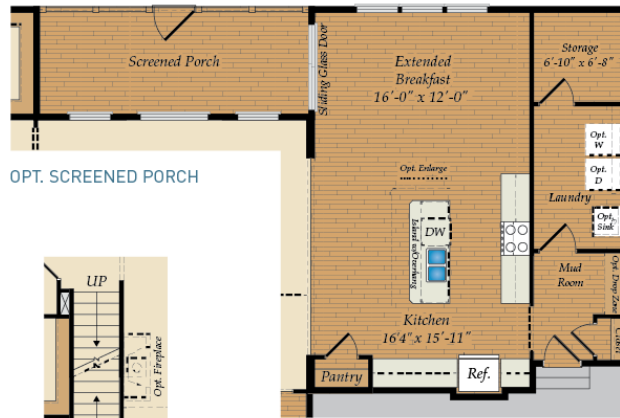
MORE OPTIONS



OPT. CALIFORNIA OWNER'S BATH

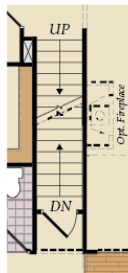


OPT. BUDDY BATH

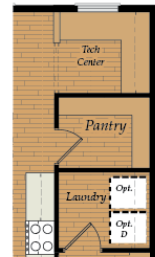


OPT. SCREENED PORCH

OPT. EXTENDED BREAKFAST

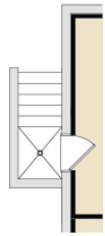


OPT. STAIRS TO OPTIONAL OPT. 2ND FLOOR

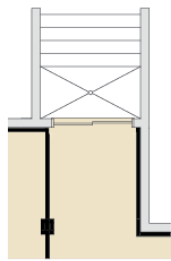


OPT. TECH. CENTER

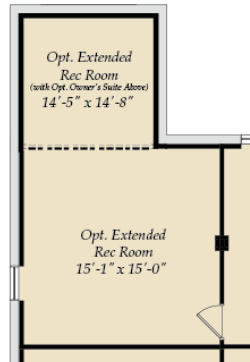
# BASEMENT



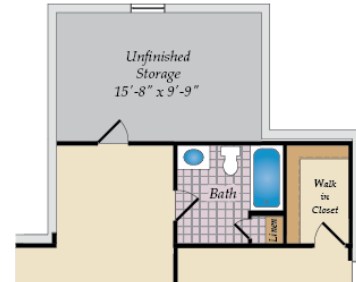
OPT. SINGLE DOOR AREAWAY



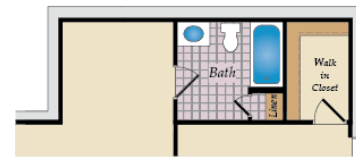
OPT. DOUBLE DOOR AREAWAY



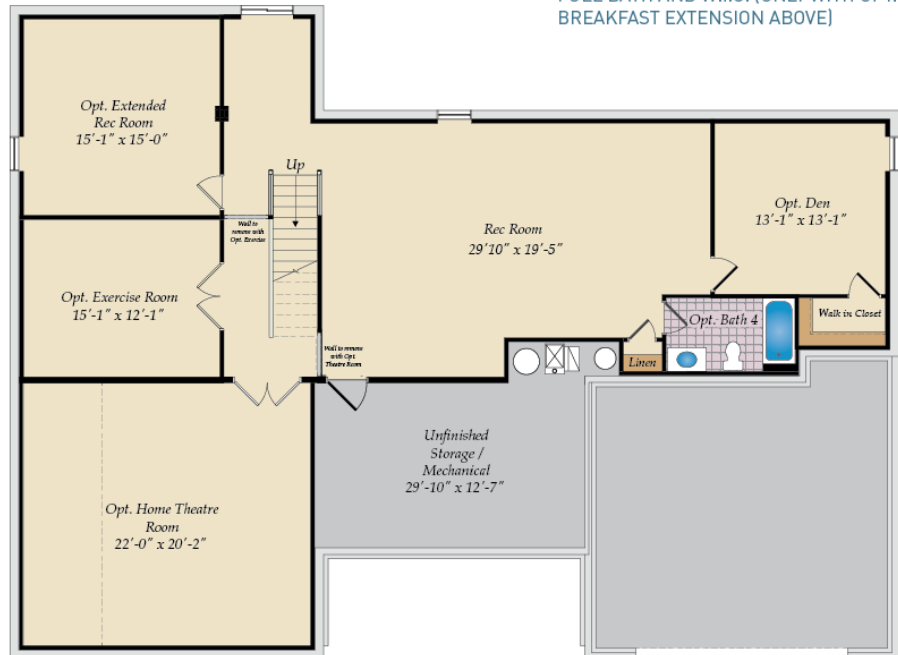
EXTENDED REC. ROOM (ONLY WITH OWNER'S SITTING ROOM ABOVE)



UNFINISHED STORAGE (ONLY WITH MORNING ROOM ABOVE)

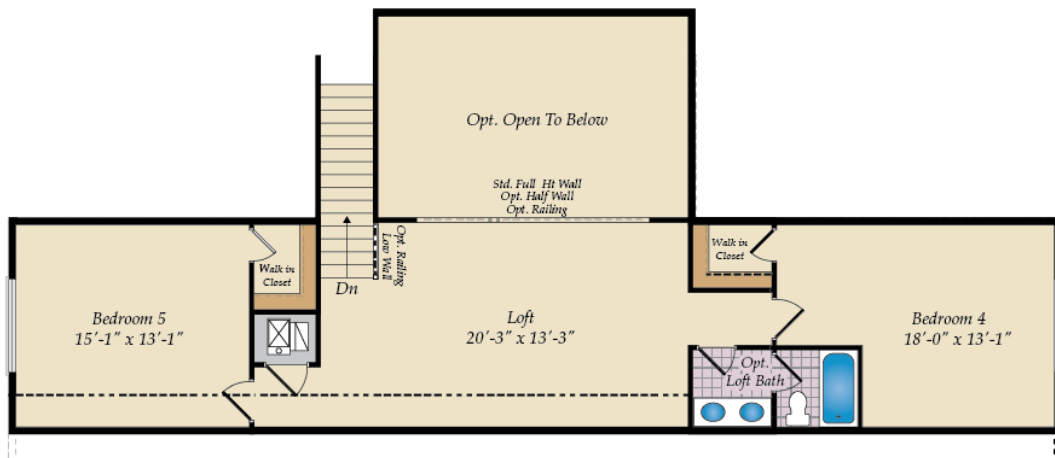


FULL BATH AND W.I.C. (ONLY WITH OPT. BREAKFAST EXTENSION ABOVE)



OPT. FINISHED BASEMENT

# OPTIONAL SECOND FLOOR



OPT. FINISHED 2ND FLOOR