



5 - 6 Beds

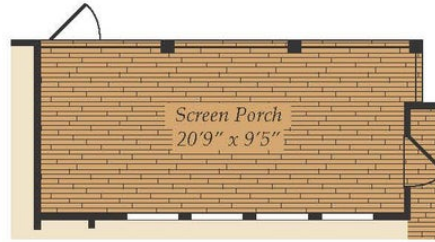
3.5 - 4.5 Baths

3,574 - 3,622 Sq Ft

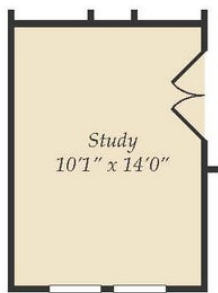
The Chadbourn is our 2020 Parade of Homes bronze prize winner! This single-family home offers plenty of living space and a spacious first floor owner suite. A large great room opens to a gourmet kitchen with walk-in pantry that will appeal to any discerning cook. Optimize the open floorplan of the Chadbourn with a choice of the study or a main level guest suite. The second floor features a Loft and Bonus Room, along with 4 secondary bedrooms.

Available Elevations





Opt. Screen Porch



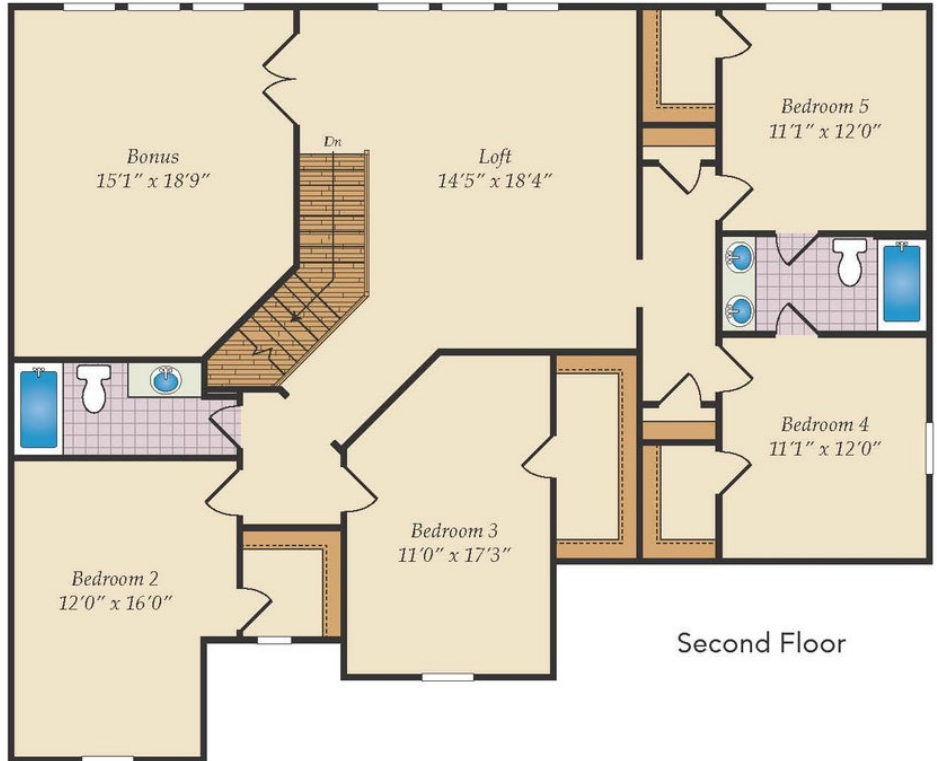
Opt. Study



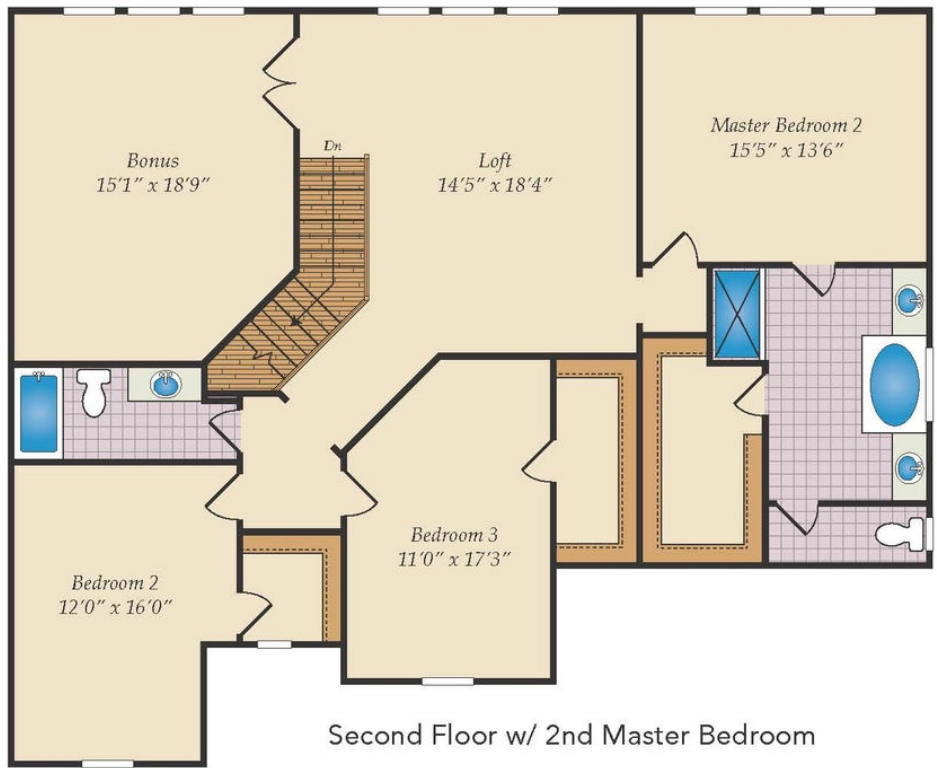
Opt. Guest Suite
w/ Full Bath



First Floor



Second Floor



Second Floor w/ 2nd Master Bedroom

Brick/stone fronts, chimneys, bay windows, keystones, exterior trim, garage doors, light fixtures, dormers, and gables shown on elevations are optional features. Actual product specifications may vary in dimension or detail from these drawings. This insert is for illustrative purposes only and is not part of the legal contract. All dimensions are approximate. Many available options are not shown.



Opt. 3 Car Garage



Opt. Bath 4



Opt. Side Load Garage