



**3 - 4 Beds**

**2.5 - 3 Baths**

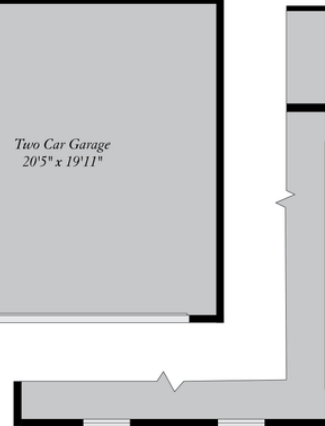
**2,792 - 4,553 Sq Ft**

The Coverdale Plan is a 3 bedroom, 2 1/2 bath home with the Master Bedroom downstairs and the option for an In-Law Suite downstairs as well. Upstairs there are 2 bedrooms with a Jack and Jill bath and a large loft area. The Coverdale has a large kitchen area with Breakfast room, large pantry and large island all open to a spacious Family Room with a gas fireplace.

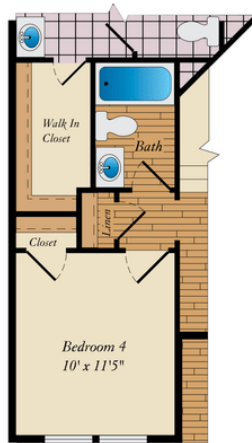
## Available Elevations



# FIRST FLOOR

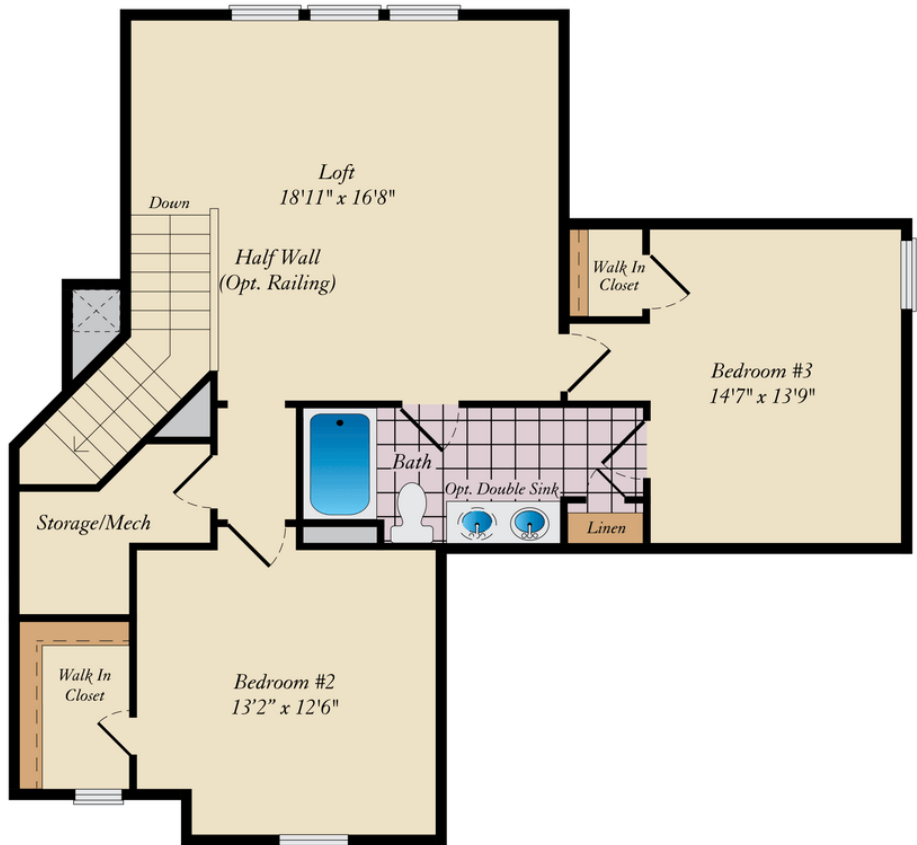


SIDE ENTRY GARAGE OPTION

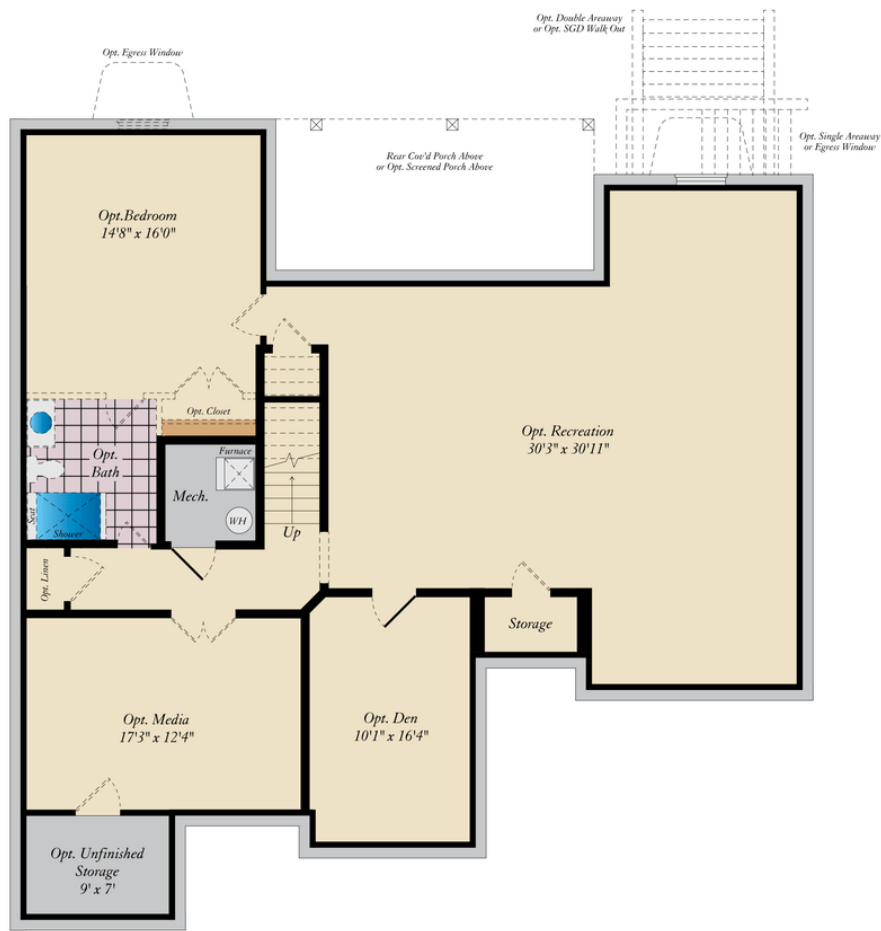
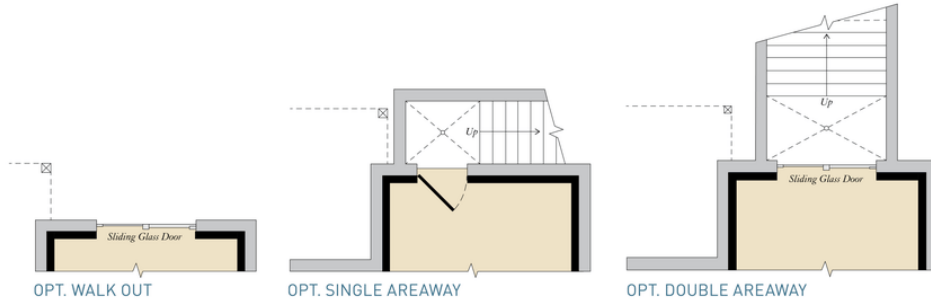


OPT BED 4

# SECOND FLOOR



# LOWER LEVEL



# GARAGE

