



3 - 4 Beds

2.5 - 3 Baths

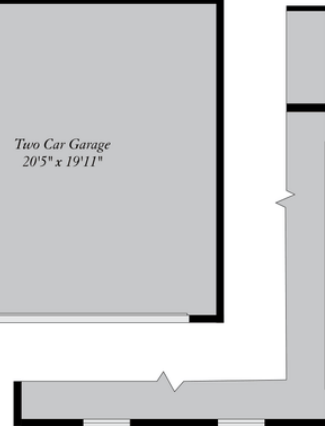
2,792 - 4,553 Sq Ft

The Coverdale Plan is a 3 bedroom, 2 1/2 bath home with the Master Bedroom downstairs and the option for an In-Law Suite downstairs as well. Upstairs there are 2 bedrooms with a Jack and Jill bath and a large loft area. The Coverdale has a large kitchen area with Breakfast room, large pantry and large island all open to a spacious Family Room with a gas fireplace.

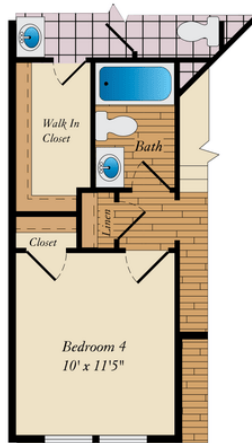
Available Elevations



FIRST FLOOR

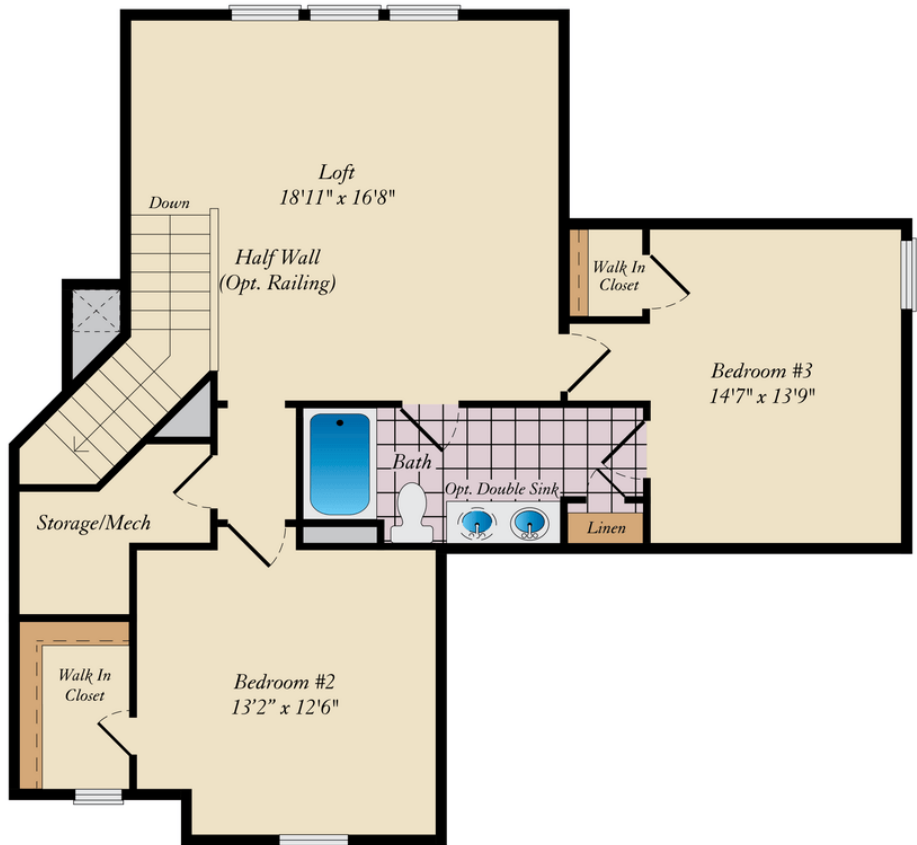


SIDE ENTRY GARAGE OPTION

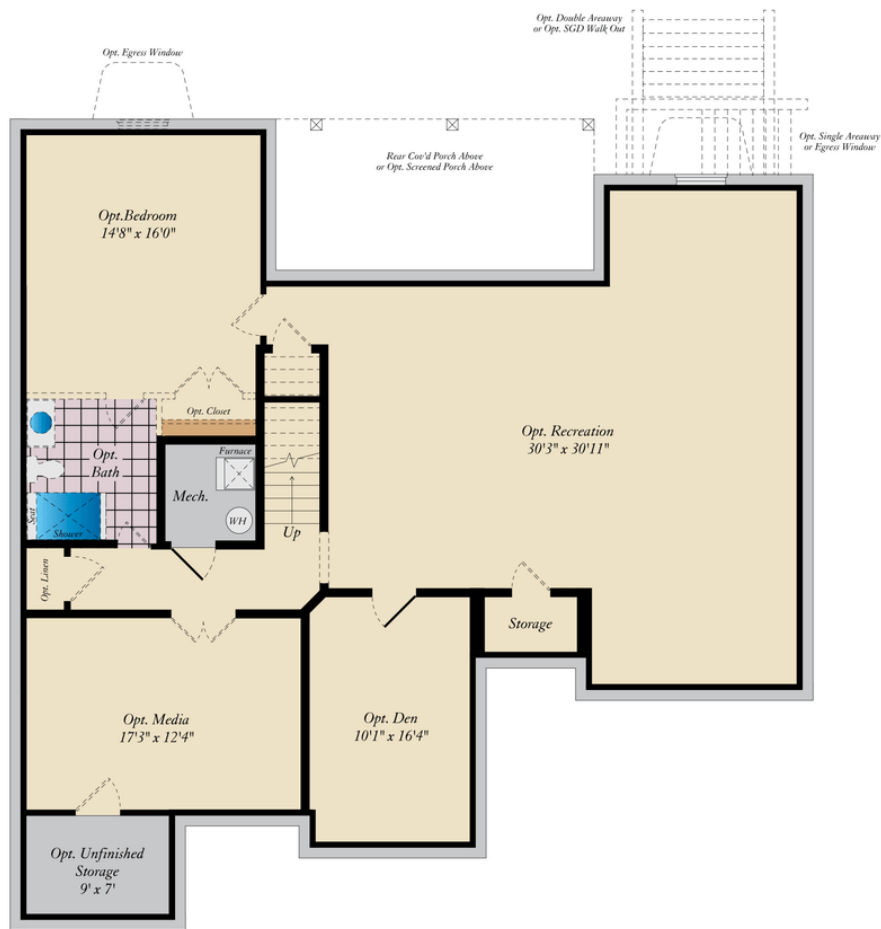
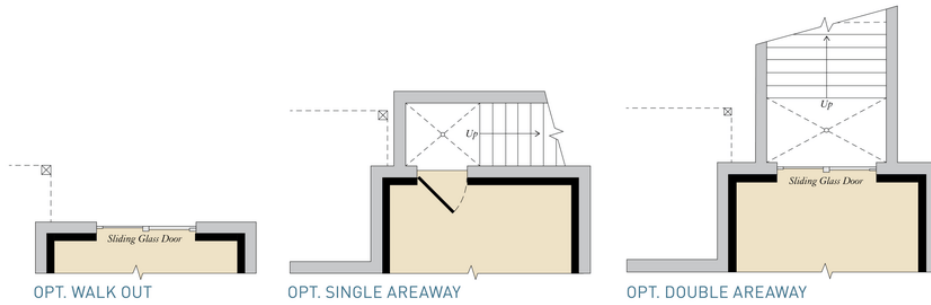


OPT BED 4

SECOND FLOOR



LOWER LEVEL



GARAGE

