

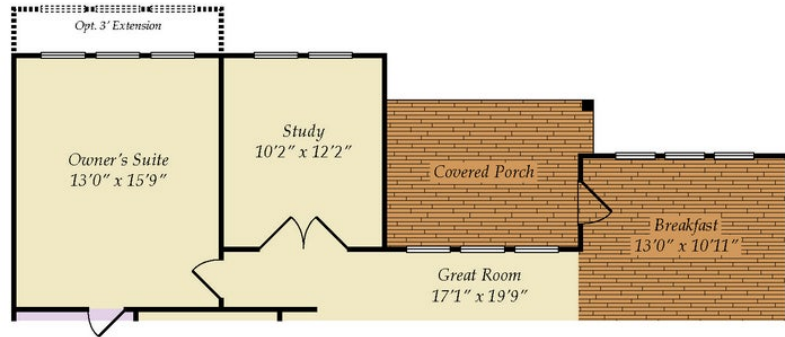
**3 - 4 Beds****2.5 - 3 Baths****2,770 - 2,953 Sq Ft**

The Davidson Plan is a 3 bedroom, 2 1/2 bath home with the Master Bedroom downstairs and the option for an In-Law Suite downstairs as well. Upstairs there are 2 bedrooms with a Jack and Jill bath and a large loft area. The Davidson has a large kitchen area with Breakfast room, large pantry and large island all open to a spacious Family Room with a gas fireplace.

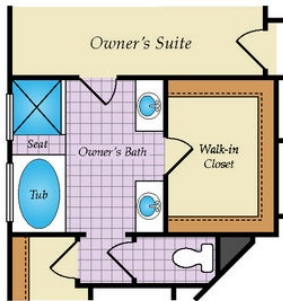
## Available Elevations



# FIRST FLOOR



OPT. STUDY AT OWNER'S SUITE



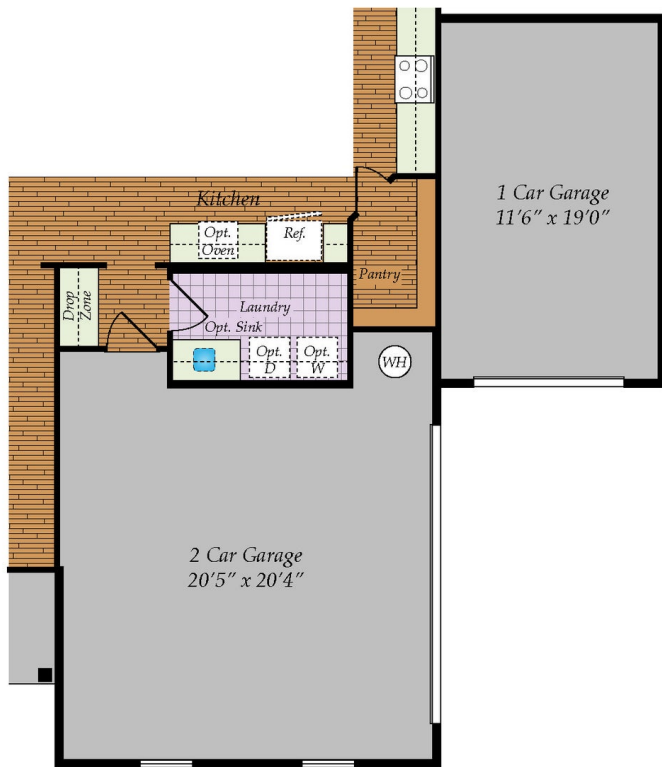
OPT. OWNER'S BATH UPGRADE



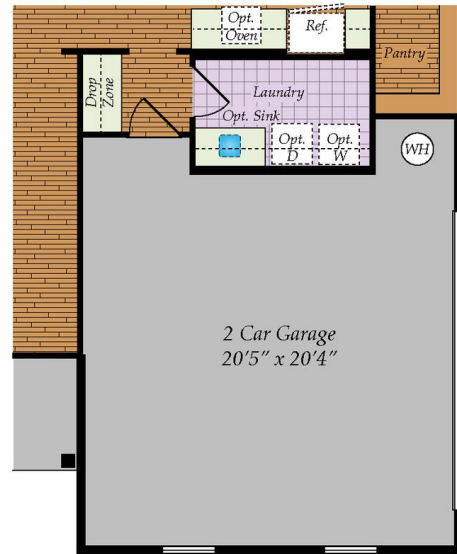
OPT. BEDROOM 4 W/ POWDER ROOM



# OTHER OPTIONS



OPT. 3RD GARAGE



OPT. SIDE LOAD GARAGE

# SECOND FLOOR



Brick/stone fronts, chimneys, bay windows, keystones, exterior trim, garage doors, light fixtures, dormers, and gables shown on elevations are optional features. Actual product specifications may vary in dimension or detail from these drawings. This insert is for illustrative purposes only and is not part of the legal contract. All dimensions are approximate. Many available options are not shown.