



4 - 5 Beds

2.5 - 4.5 Baths

2,858 - 5,431 Sq Ft

The popular Emory II plan is a single family home starting at 2,858 square feet, with options to expand up to 5,431 square feet of living space. The home has a two car garage and many elevations, including brick and stone combination fronts and craftsman styles. Inside, the home comes standard with 4 bedrooms and 2.5 baths with the option to add an additional bedroom and full bath in the basement. This dream home offers many upgrades such as a gourmet kitchen, stone or modern fireplace and a grand owner suite with optional spa bath. Choose from hundreds of features to personalize this home and make it your own.

Available Elevations

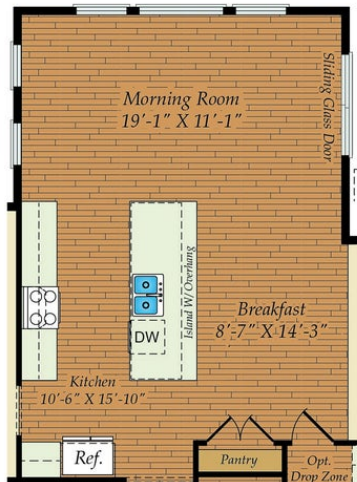


FIRST FLOOR

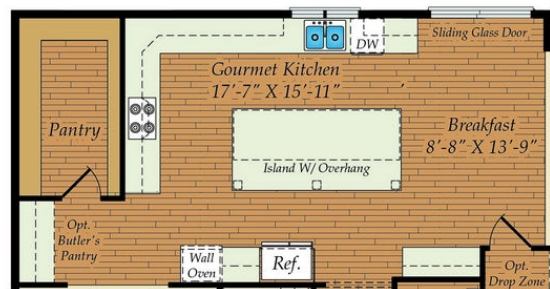


OPT. CONSERVATORY

OPT. 2-CAR SIDE LOAD GARAGE

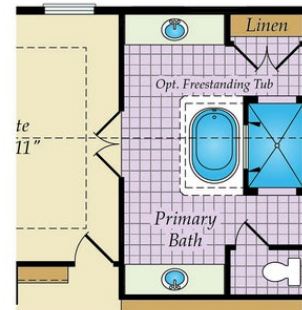
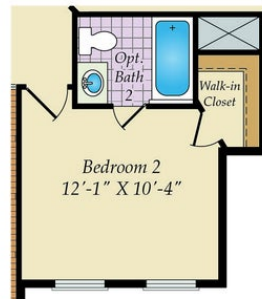
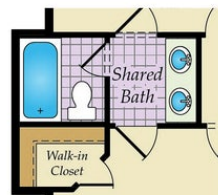
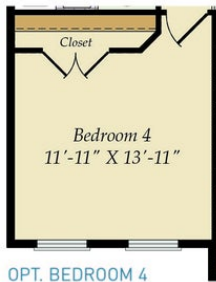
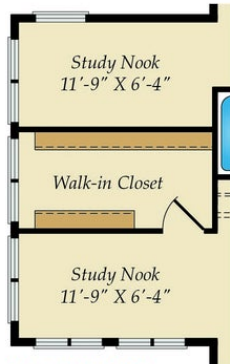
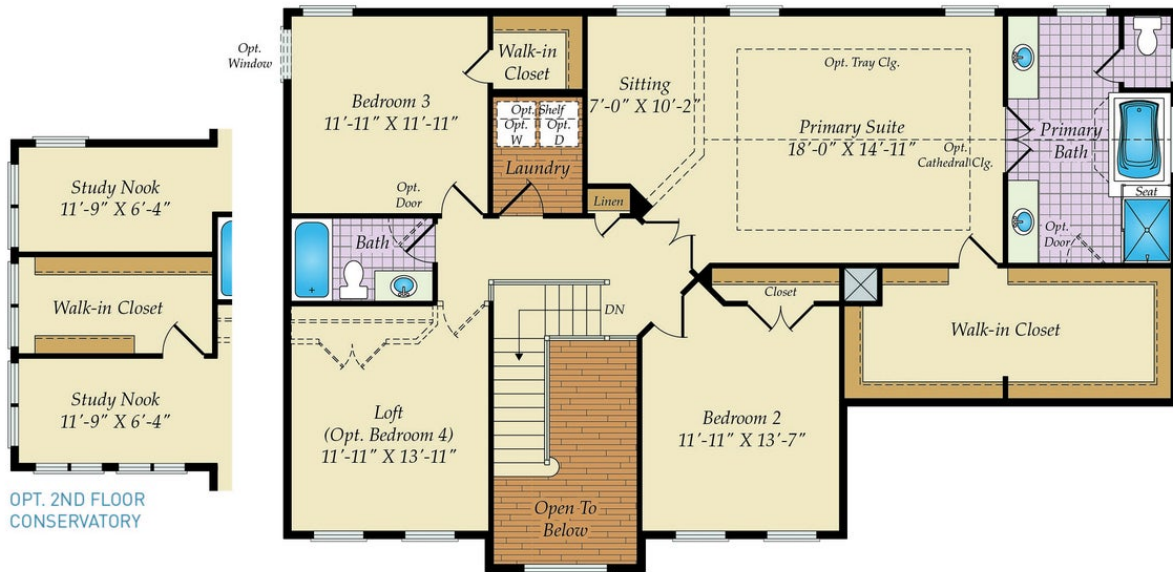


OPT. MORNING ROOM

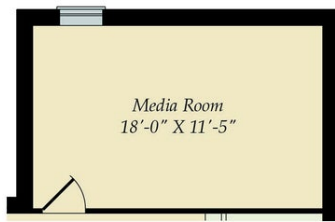


OPT. GOURMET KITCHEN

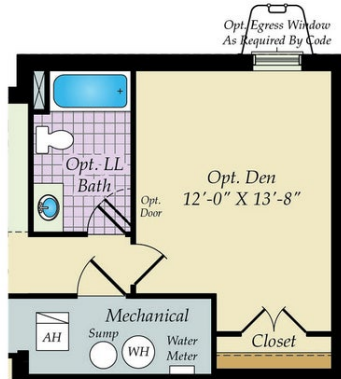
SECOND FLOOR



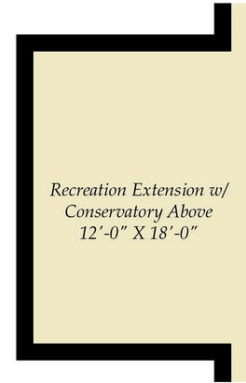
BASEMENT



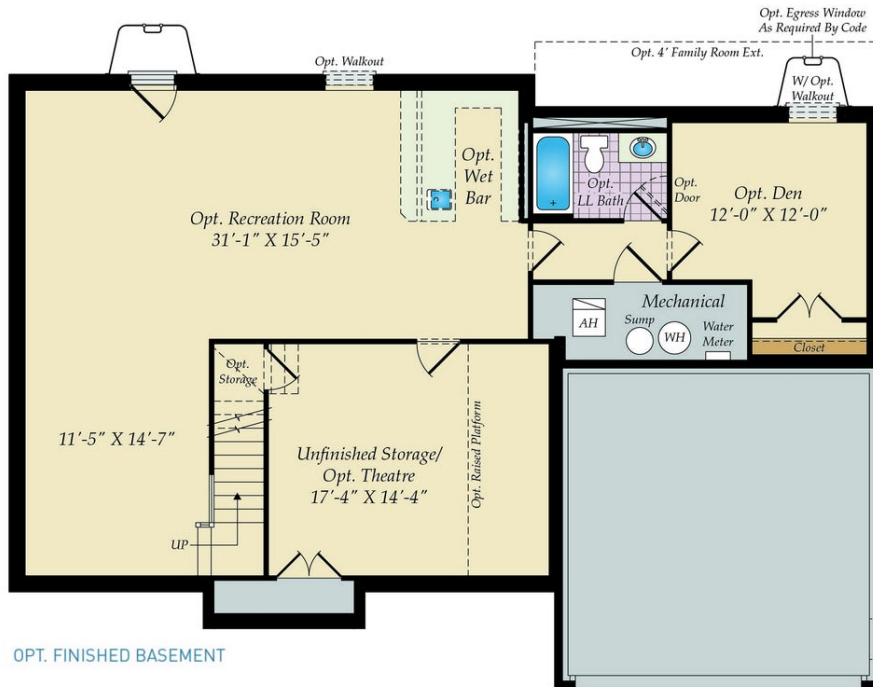
OPT. MEDIA ROOM W/MORNING ROOM ABOVE



OPT. DEN EXTENSION W/GREAT ROOM EXT. ABOVE



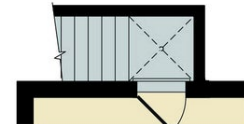
OPT. REC. EXTENSION W/ CONSERVATORY ABOVE



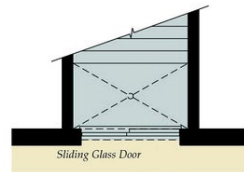
OPT. FINISHED BASEMENT



OPT. WALKOUT BASEMENT



OPT. SINGLE AREAWAY



OPT. DOUBLE AREAWAY