



4 - 5 Beds

2.5 - 4.5 Baths

2,858 - 5,431 Sq Ft

The popular Emory II plan is a single family home starting at 2,858 square feet, with options to expand up to 5,431 square feet of living space. The home has a two car garage and many elevations, including brick and stone combination fronts and craftsman styles. Inside, the home comes standard with 4 bedrooms and 2.5 baths with the option to add an additional bedroom and full bath in the basement. This dream home offers many upgrades such as a gourmet kitchen, stone or modern fireplace and a grand owner suite with optional spa bath. Choose from hundreds of features to personalize this home and make it your own.

Available Elevations

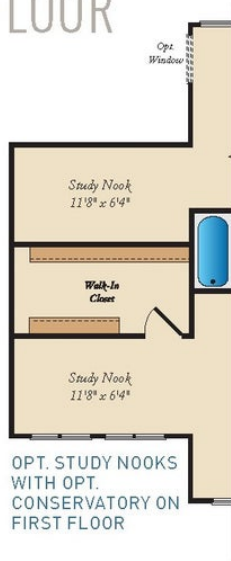


FIRST FLOOR

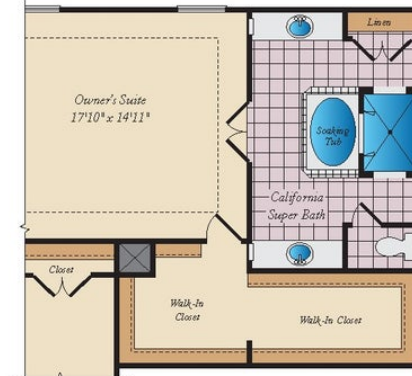


Brick/stone fronts, chimneys, bay windows, keystones, exterior trim, garage doors, light fixtures, dormers, and gables shown on elevations are optional features. Actual product specifications may vary in dimension or detail from these drawings. This insert is for illustrative purposes only and is not part of the legal contract. All dimensions are approximate. Many available options are not shown.

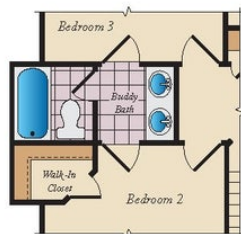
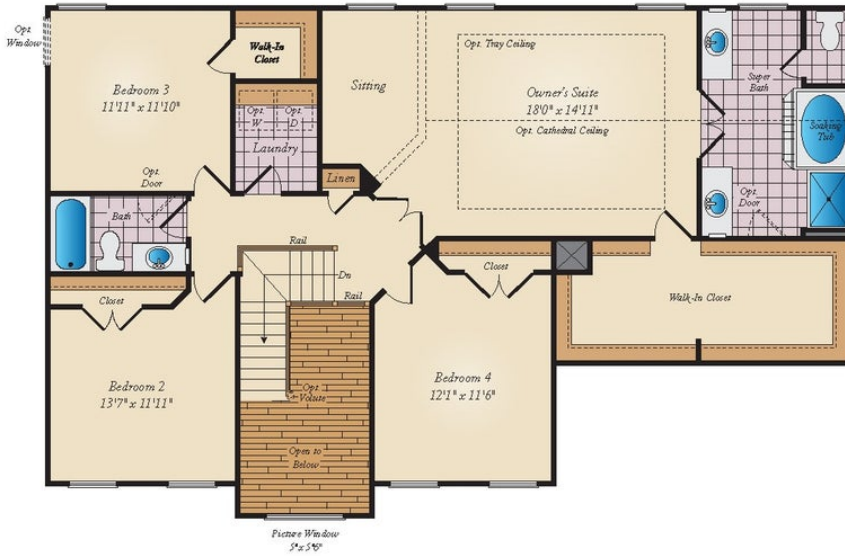
SECOND FLOOR



OPT. STUDY NOOKS
WITH OPT.
CONSERVATORY ON
FIRST FLOOR



OPT. WALK-THRU SHOWER

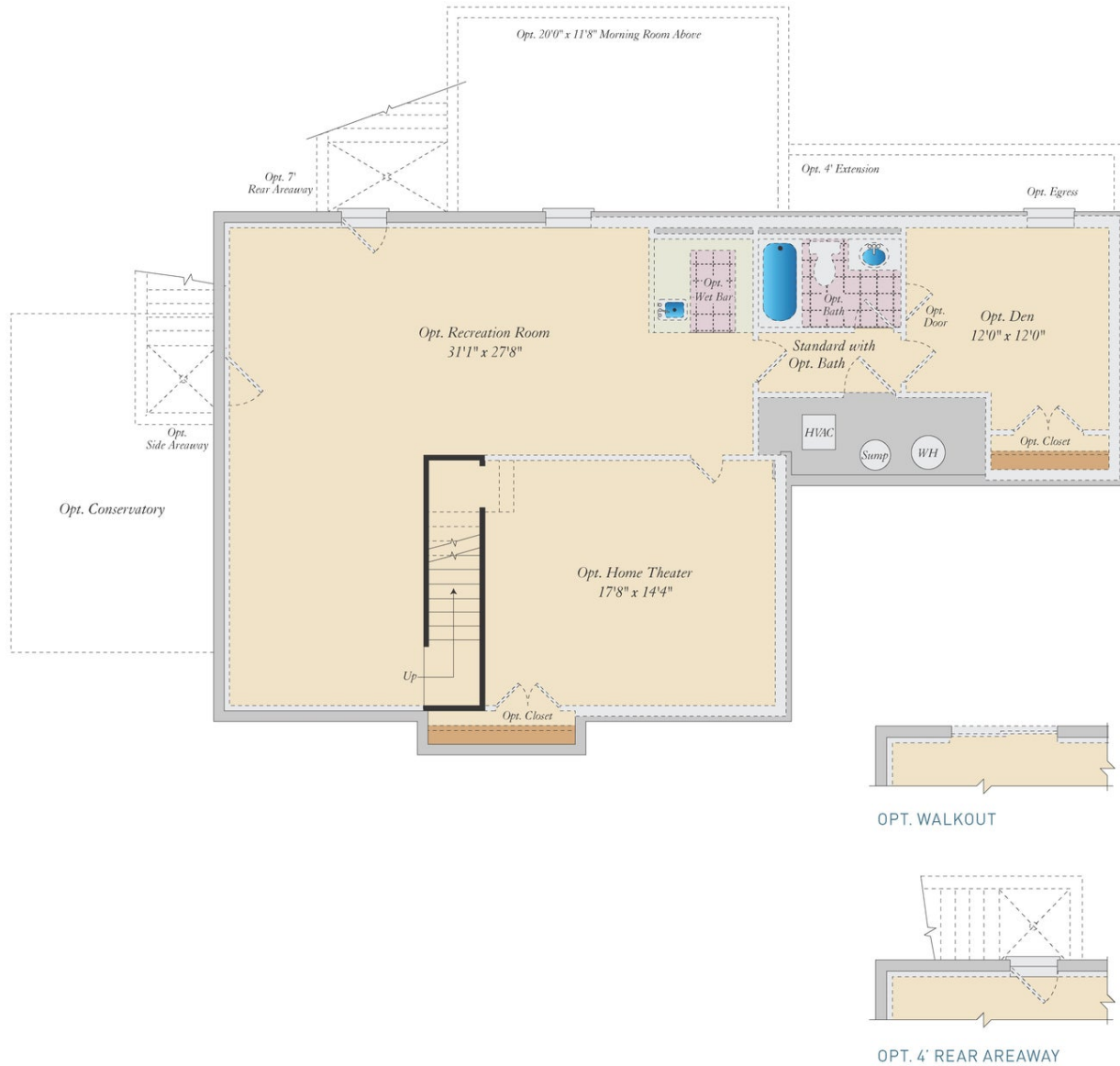


OPT. BUDDY BATH
AVAILABLE W/ OPT. 3RD
BATH



OPT. 3RD BATH

BASEMENT



Brick/stone fronts, chimneys, bay windows, keystones, exterior trim, garage doors, light fixtures, dormers, and gables shown on elevations are optional features. Actual product specifications may vary in dimension or detail from these drawings. This insert is for illustrative purposes only and is not part of the legal contract. All dimensions are approximate. Many available options are not shown.