



3 - 5 Beds

2.5 - 4 Baths

2,686 - 3,599 Sq Ft

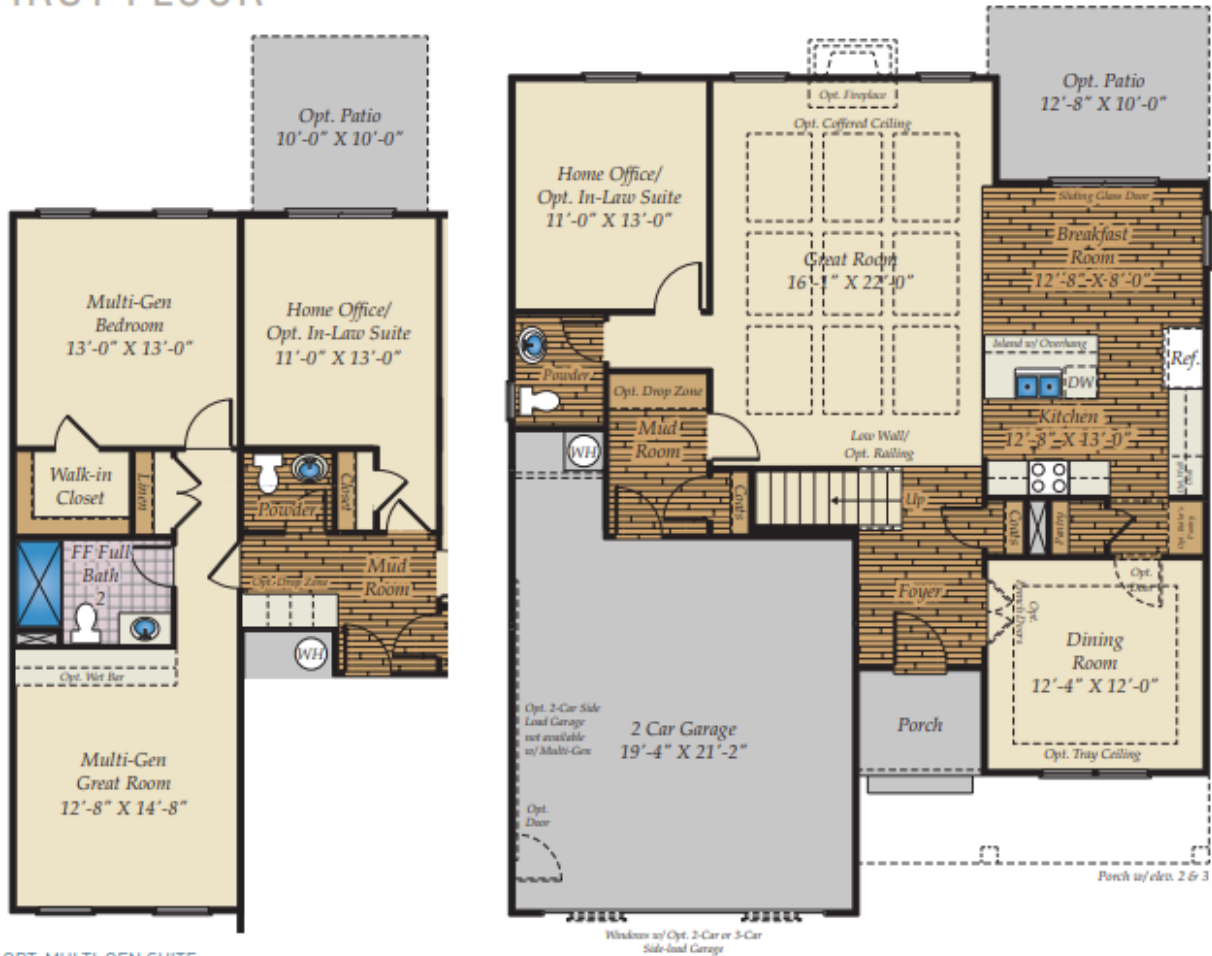
Our brand new Fontana plan! This floorplan offers plenty of room and options to suit your needs. Enter through the front porch and into the foyer and formal dining room. Walk further in where you are greeted by the sizeable family room, open to the kitchen. Choose to upgrade to a gourmet kitchen, which features a large island, kitchen backsplash, and large pantry, perfect for any chef. Opt for an optional deck or screened porch and enjoy the outdoors.

Upstairs comes standard three bedrooms and loft, which can be converted to an additional bedroom. The owner's suite features a luxurious bath, shower, and double vanity. Two walk-in closets provide plenty of extra storage space. Plenty of options available to make this floorplan your own!

Available Elevations



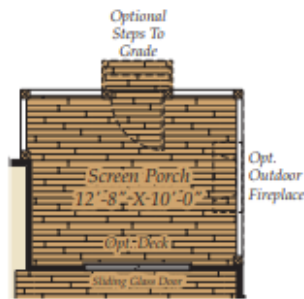
FIRST FLOOR



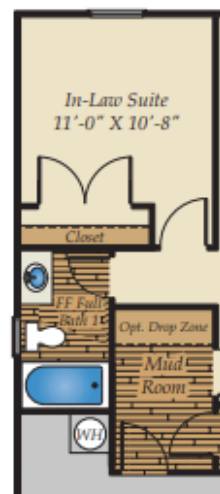
OPT. MULTI-GEN SUITE



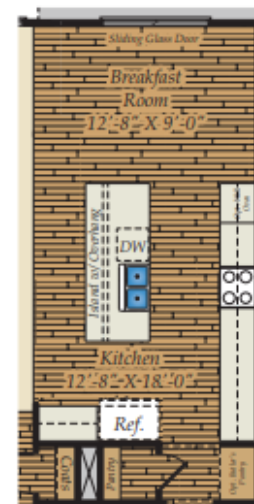
1ST FLOOR w/OPT. 3RD FLOOR



OPT. SCREENED PORCH

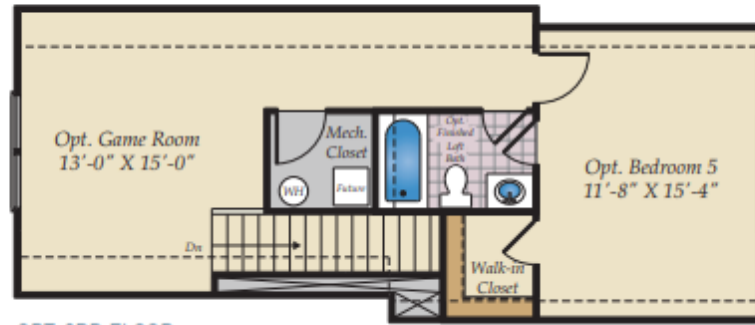


OPT. IN-LAW SUITE
W. FIN. FULL BATH

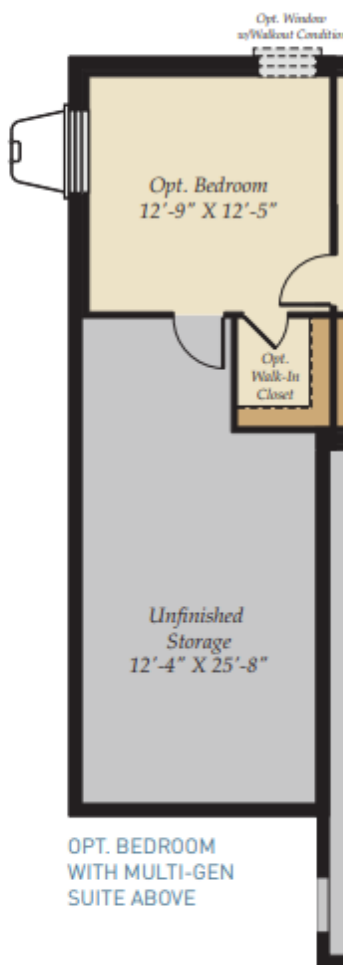


OPT. EXPANDED KITCHEN

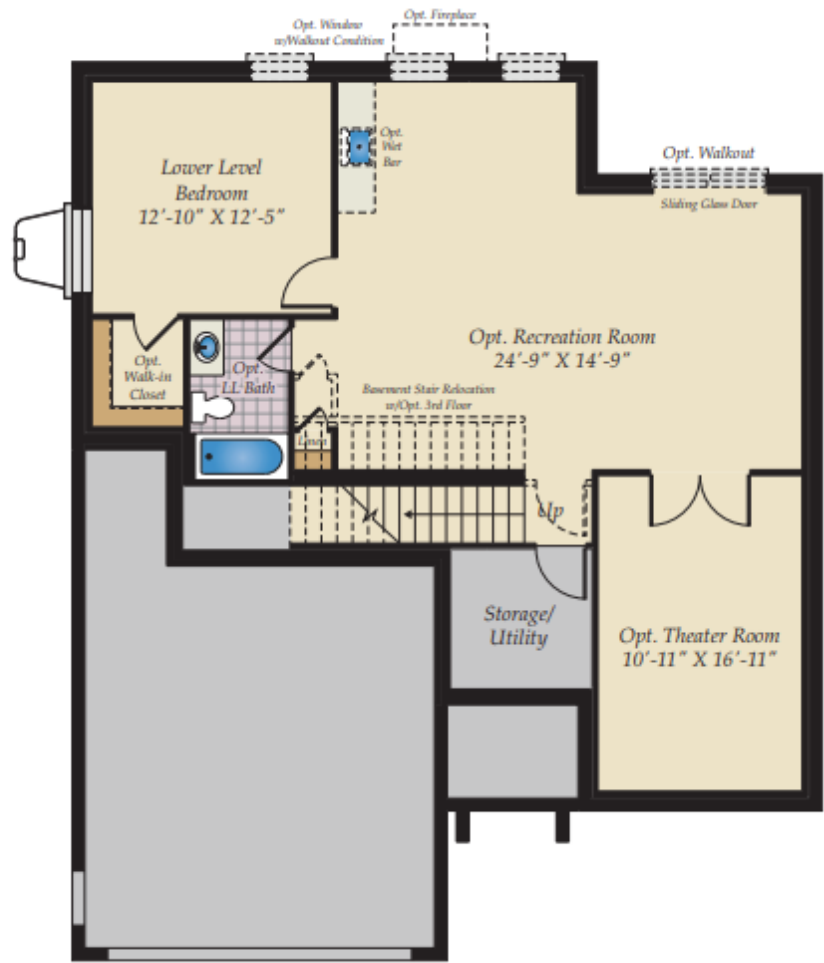
OPT. THIRD FLOOR & OPT. BASEMENT



OPT. 3RD FLOOR

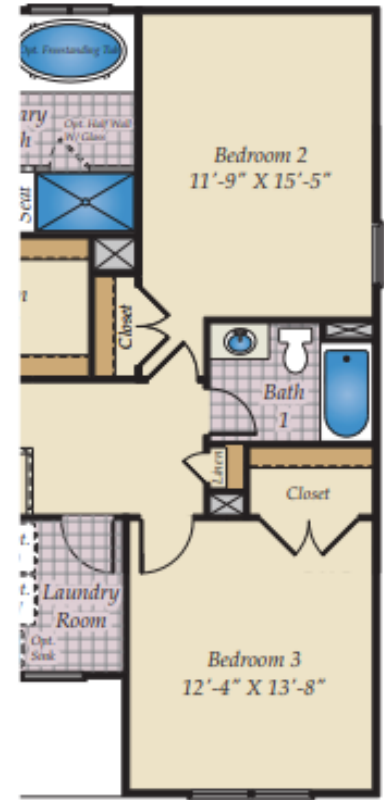
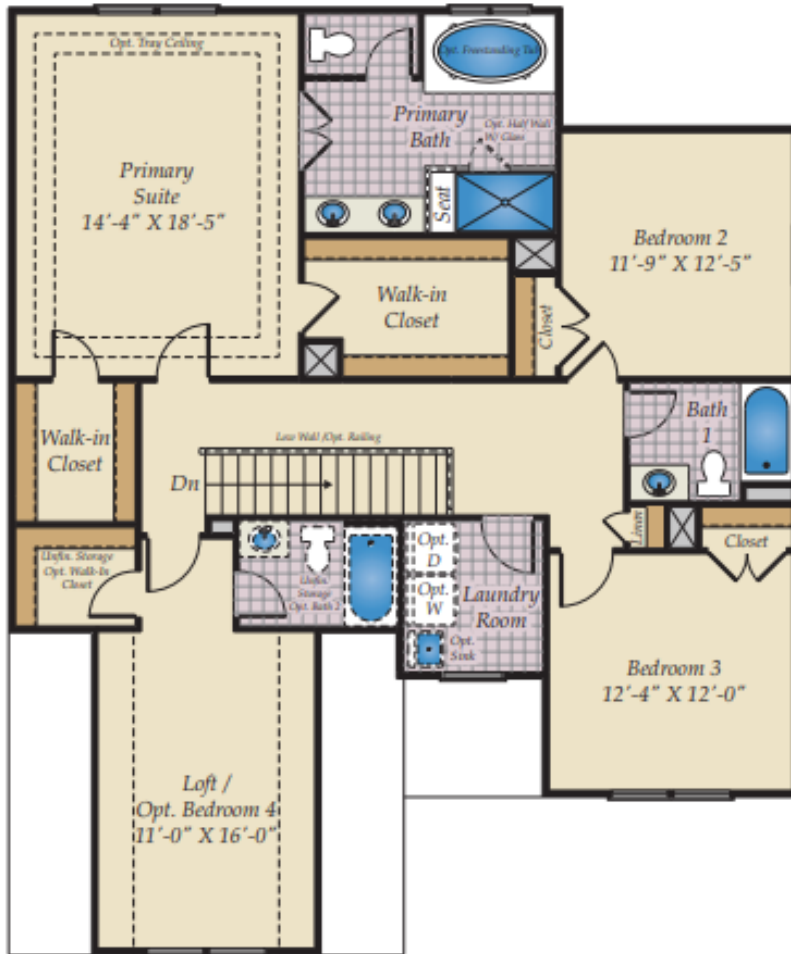


OPT. BEDROOM
WITH MULTI-GEN
SUITE ABOVE

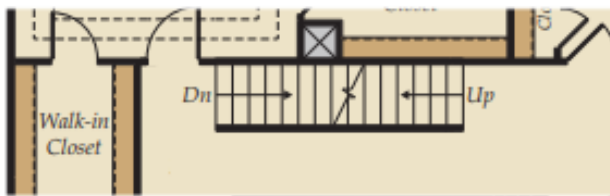


OPT. BASEMENT

SECOND FLOOR



2ND FLOOR w/OPT. EXT. KITCHEN BELOW



2ND FLOOR w/OPT. 3RD FLOOR



OPT. PRIMARY BATH