



**4 - 6 Beds**

**2.5 - 5.5 Baths**

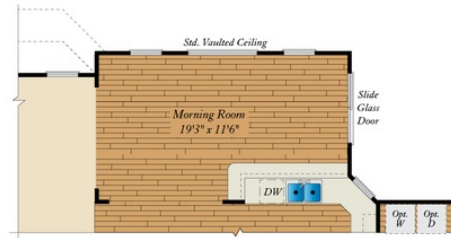
**3,410 - 9,164 Sq Ft**

The Kingsport Craftsman plan is our most popular and versatile estate home starting at 3,410 square feet, with options to expand up to 9,164 square feet of luxurious living space. The home can be built with a two or three car garage and is available in many elevations, including brick and stone combination fronts and craftsman styles. Inside, plenty of grand features await including a two-story foyer, two-story family room, optional in-law suite and multiple options to upgrade to a gourmet or chef's kitchen. A luxury owner's retreat can be designed with a sitting area, fireplace, multiple walk-in closets and our most exciting Caribbean or California spa bath. Design your basement for entertaining with options like a theater room, wet bar and a den or 5th bedroom. There are hundreds of ways to personalize this luxurious home and make it your own.

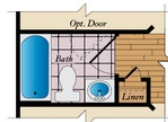
## Available Elevations



FIRST FLOOR



OPT. MORNING ROOM



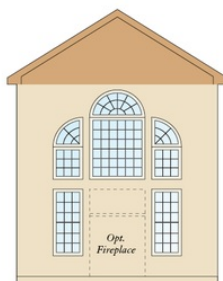
OPT. FULL BATH



OPT. CONSERVATORY



OPT. 5-FT. FAMILY ROOM EXTENSION



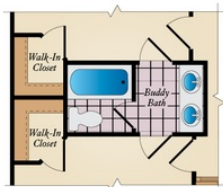
OPT. DELUXE FAMILY ROOM WINDOW PACKAGE



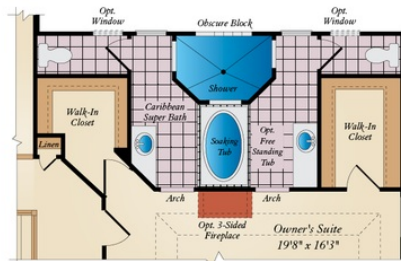
OPT. CHEF'S KITCHEN

## SECOND FLOOR

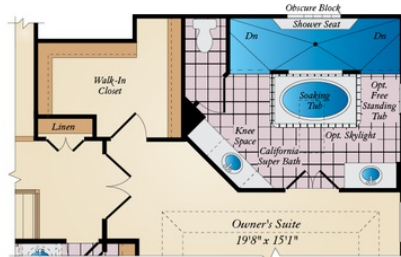
Alternate second floor plan available.  
Please visit our floor plan designer to view.



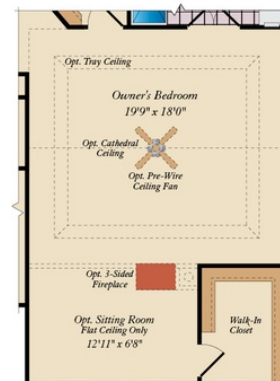
OPT. BUDDY BATH  
REQUIRES SELECTION  
OF OPT. 3RD BATH



OPT. CARIBBEAN SUPER BATH  
WITH STD. SECOND FLOOR

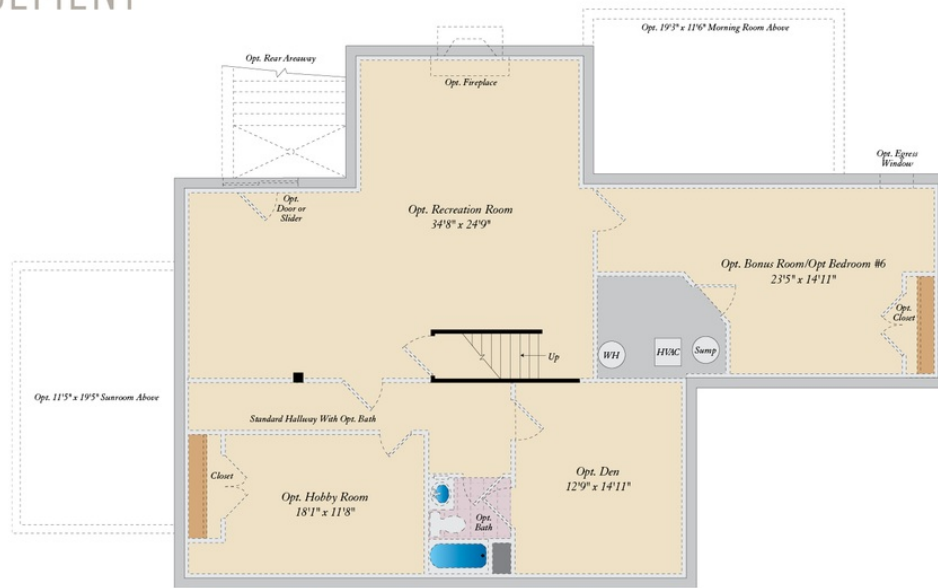


OPT. CALIFORNIA SUPER BATH  
WITH STD. SECOND FLOOR



OPT. OWNER'S BEDROOM  
WITH 2-CAR GARAGE

# BASEMENT



OPT. LOWER LEVEL