



4 - 6 Beds

2.5 - 5.5 Baths

3,436 - 7,288 Sq Ft

The Kingsport II Craftsman is an updated version of our most popular and versatile estate home starting at 3,436 square feet, with options to expand up to 7,288 square feet of luxurious living space. The home can be built with a two or three car garage and is available in many elevations including traditional, brick and stone combination and craftsman styles. Inside, plenty of grand features await including a two-story foyer, two-story family room, optional in-law suite and multiple options to upgrade to a gourmet or chef's kitchen. A luxury owner's retreat can be designed with a sitting area, fireplace, multiple walk-in closets and our most exciting Caribbean or California spa bath. Design your basement for entertaining with options like a theater room, wet bar and a den or 5th bedroom. There are hundreds of ways to personalize this elegant home and make it your own.

Available Elevations



FIRST FLOOR



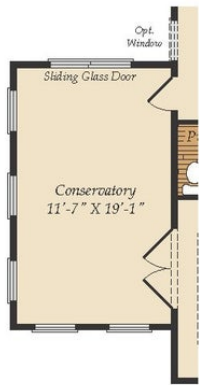
OPT. SCREENED PORCH



OPT. MORNING ROOM
(Shown with Opt. Deluxe Kitchen)



OPT. IN-LAW SUITE

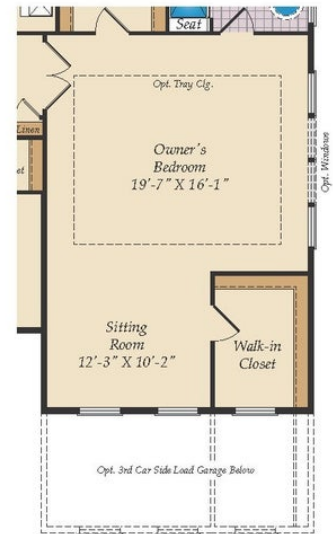
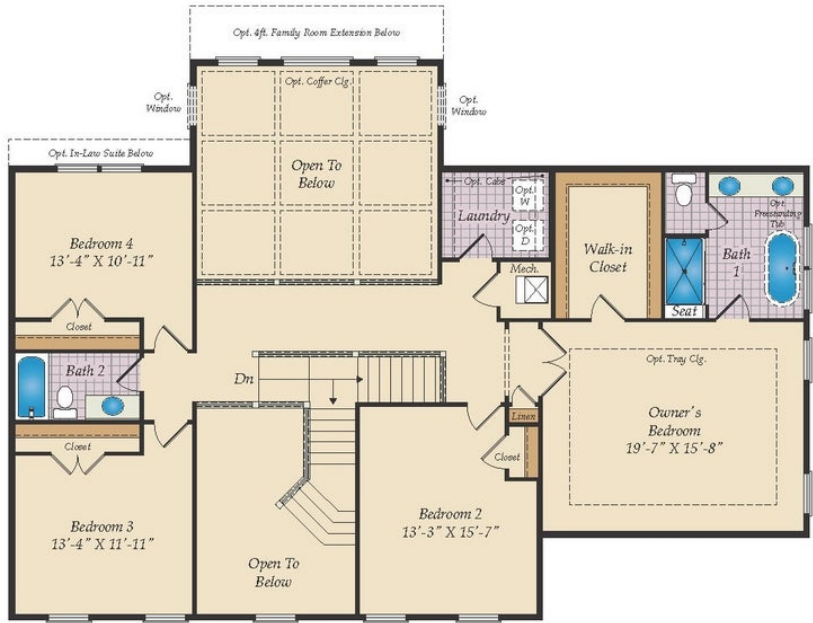


OPT. CONSERVATORY

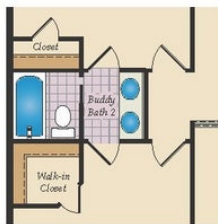


Brick/stone fronts, chimneys, bay windows, keystones, exterior trim, garage doors, light fixtures, dormers, and gables shown on elevations are optional features. Actual product specifications may vary in dimension or detail from these drawings. This insert is for illustrative purposes only and is not part of the legal contract. All dimensions are approximate. Many available options are not shown.

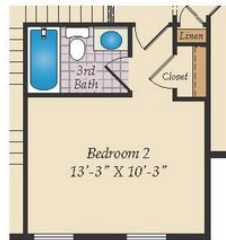
SECOND FLOOR



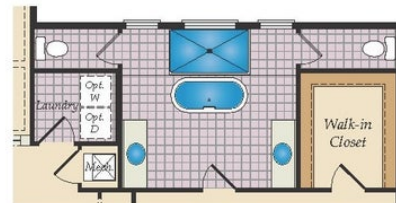
OPT. SITTING ROOM W/
2 CAR SIDE LOAD GARAGE



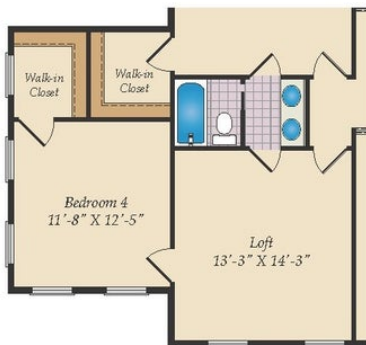
OPT. BUDDY BATH



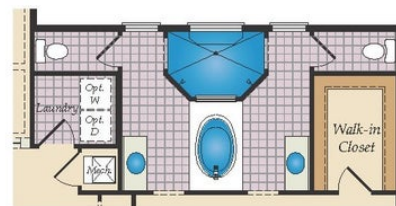
OPT. 3RD BATH



OPT. CALIFORNIA BATH

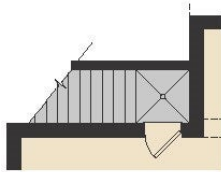


OPT. CONSERVATORY BELOW



OPT. CARIBBEAN BATH

BASEMENT



OPT. SINGLE AREAWAY



OPT. DOUBLE AREAWAY

