



**4 - 6 Beds**

**2.5 - 4 Baths**

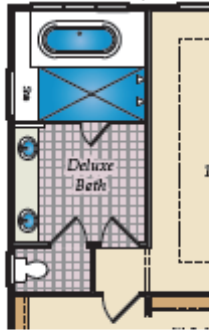
**3,328 - 5,600 Sq Ft**

The Lexington has it all. Home has spacious dining room and home office on either side of stunning 2 story foyer with a 2 landing staircase. First floor owners suite with amazing spa bath. This home boasts our largest closet at approximately 148 square feet. Wonderful open floor plan- size great for entertaining. Kitchen open to family room and breakfast. Wonderful walk in pantry. It has 3 more bedrooms up and an expansive bonus room. Home has opportunity to add amazing outdoor living space and a large walk in attic.

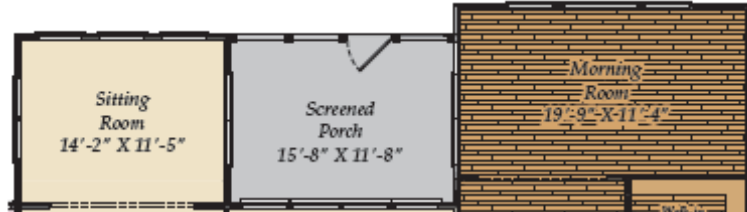
## Available Elevations



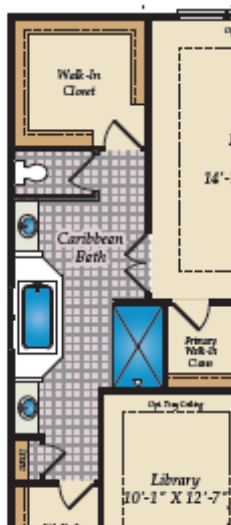
# FIRST FLOOR



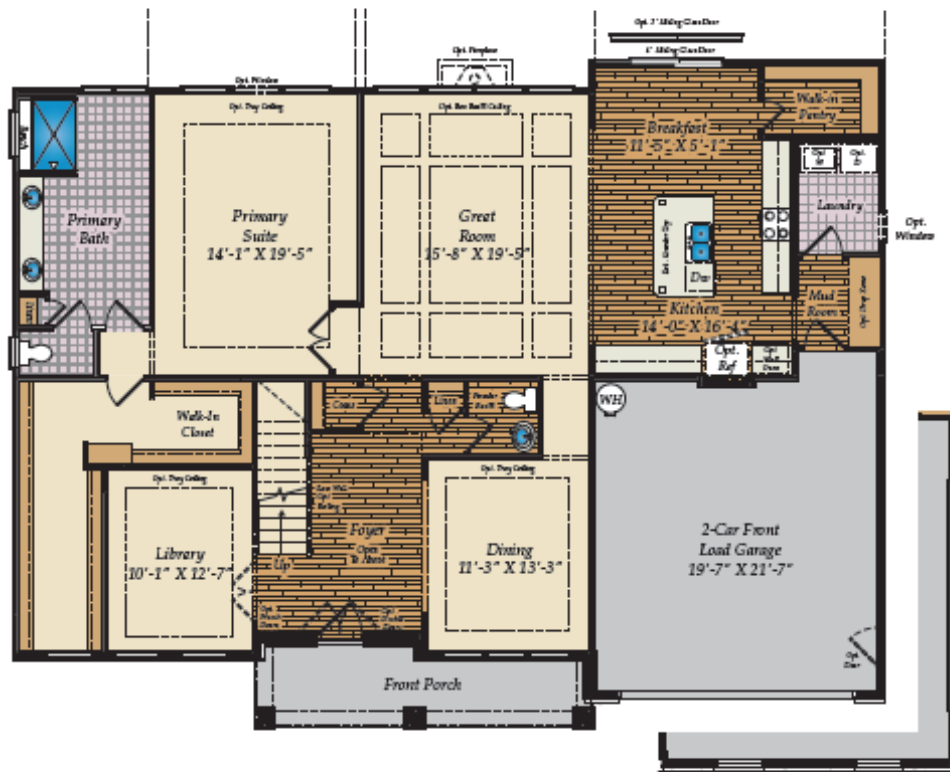
OPT. DELUXE BATH



OPT. SITTING ROOM, SCREENED PORCH AND MORNING ROOM



OPT. PRIMARY CARIBBEAN BATH



OPT. 2-CAR SIDE LOAD GARAGE



OPT. DECK



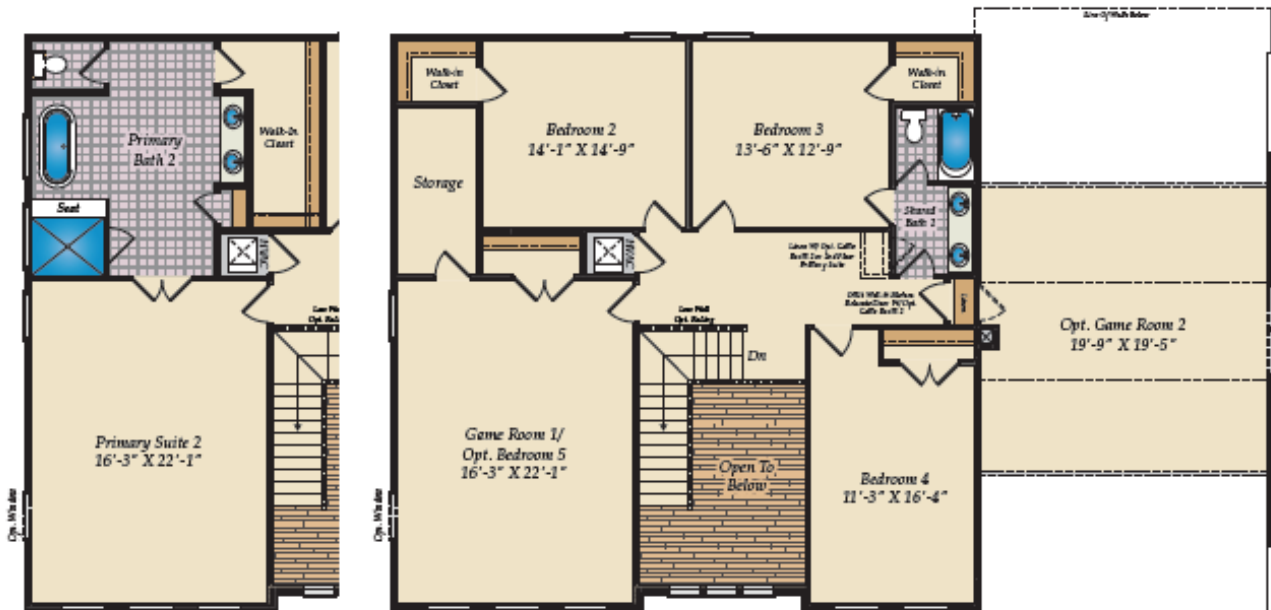
OPT. BUTLER'S PANTRY



OPT. STAIRS TO OPTIONAL BASEMENT

Brick/stone fronts, chimneys, bay windows, keystones, exterior trim, garage doors, light fixtures, dormers, and gables shown on elevations are optional features. Actual product specifications may vary in dimension or detail from these drawings. This insert is for illustrative purposes only and is not part of the legal contract. All dimensions are approximate. Many available options are not shown.

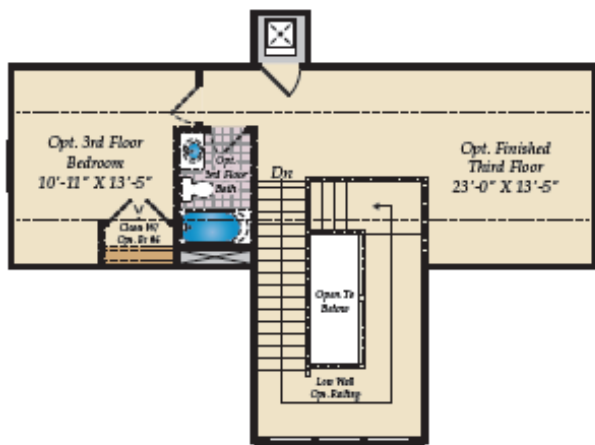
## SECOND FLOOR & OTHER OPTIONS



OPT. PRIMARY SUITE 2



OPT. 3-CAR GARAGE



OPT. FINISHED THIRD FLOOR



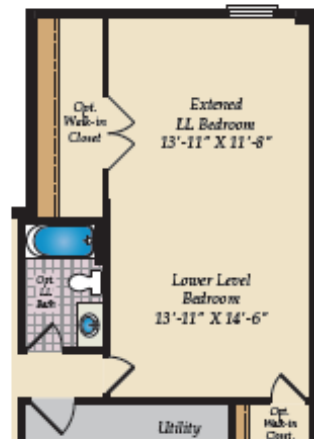
OPT. SHARED BATH 2

Brick/stone fronts, chimneys, bay windows, keystones, exterior trim, garage doors, light fixtures, dormers, and gables shown on elevations are optional features. Actual product specifications may vary in dimension or detail from these drawings. This insert is for illustrative purposes only and is not part of the legal contract. All dimensions are approximate. Many available options are not shown.

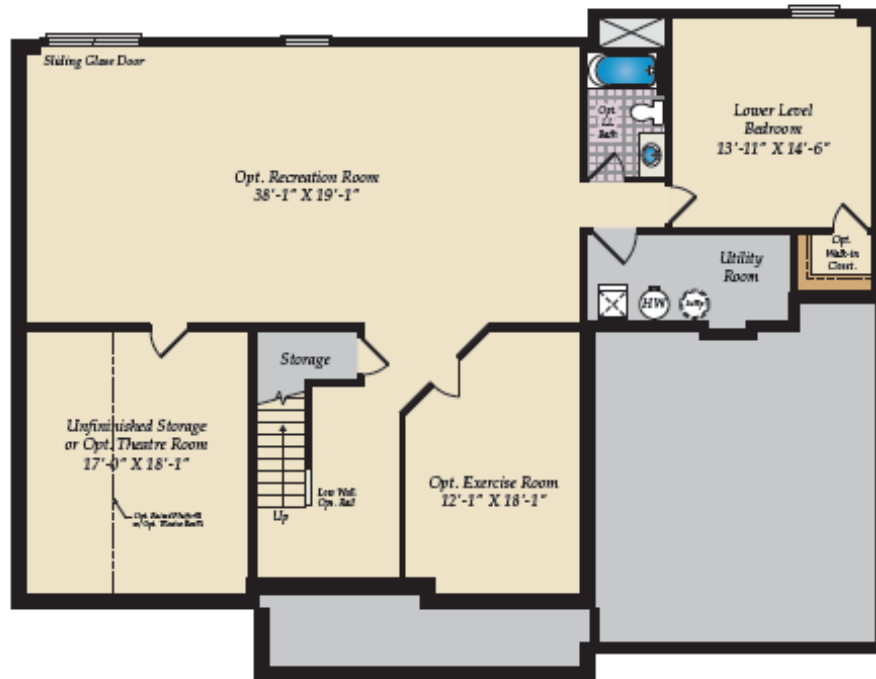
# OPT. BASEMENT



OPT. RECREATION ROOM EXTENSION  
 W/ SITTING ROOM ABOVE



OPT. BONUS ROOM EXTENSION  
 W/ MORNING ROOM ABOVE



OPT. FINISHED BASEMENT