



3 Beds

2.5 - 3.5 Baths

1,784 - 2,531 Sq Ft

Welcome to our 3 Story Linville townhome plan, currently available at our Parc Townes at Wendell community! This townhome comes with a one-car front load garage and 1,784+ square feet of living space. Inside, the lower level features an optional rec room with an additional powder room and fireplace. Alternatively, you may opt for a 4th bedroom with a full bath. On the first level, our beautiful open floor plan presents a sizeable kitchen, dining room, and great room with the potential for an added fireplace. The kitchen features a large island, spacious pantry, whirlpool stainless steel appliances and optional kitchen backsplash. Also included on the first floor is a powder room and coat closet.

The second level provides a great array of choices for personalization. The owner's suite comes with a walk-in closet and an optional vaulted ceiling. The owner's bathroom comes with a shower, which can be substituted for a tub and shower combo. The configuration of the second floor can be changed in many ways! Choose from the options of extending the owner's closet, removing the third bedroom, making a larger en-suite second bedroom, and more! Contact Sales Manager for further information.

For a ...

Available Elevations

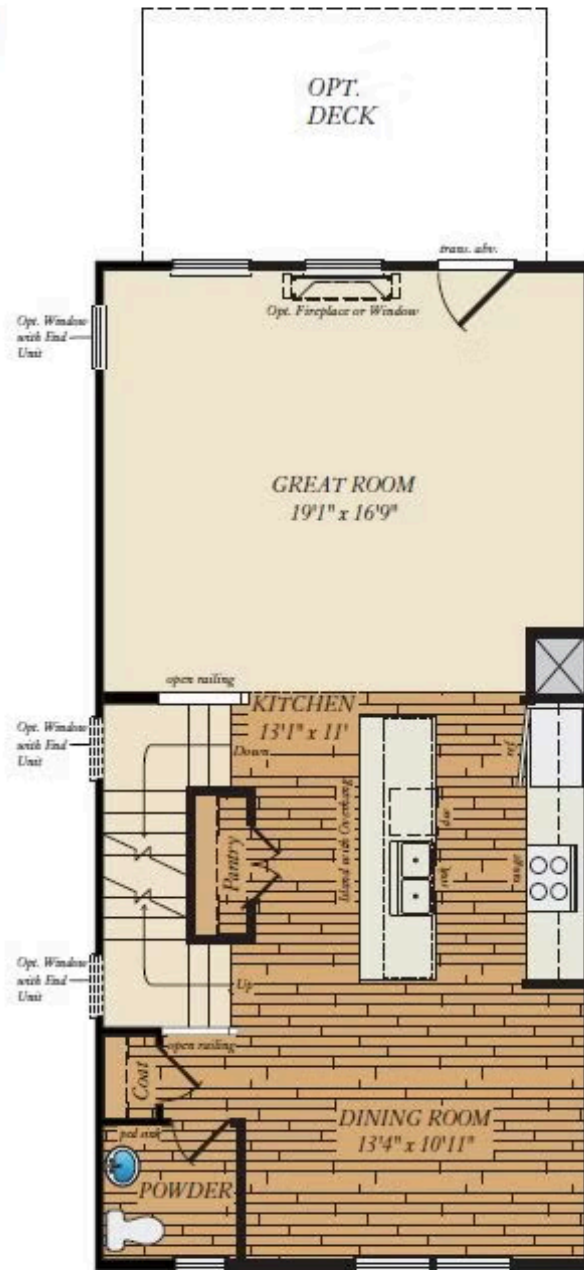


Brick/stone fronts, chimneys, bay windows, keystones, exterior trim, garage doors, light fixtures, dormers, and gables shown on elevations are optional features. Actual product specifications may vary in dimension or detail from these drawings. This insert is for illustrative purposes only and is not part of the legal contract. All dimensions are approximate. Many available options are not shown.

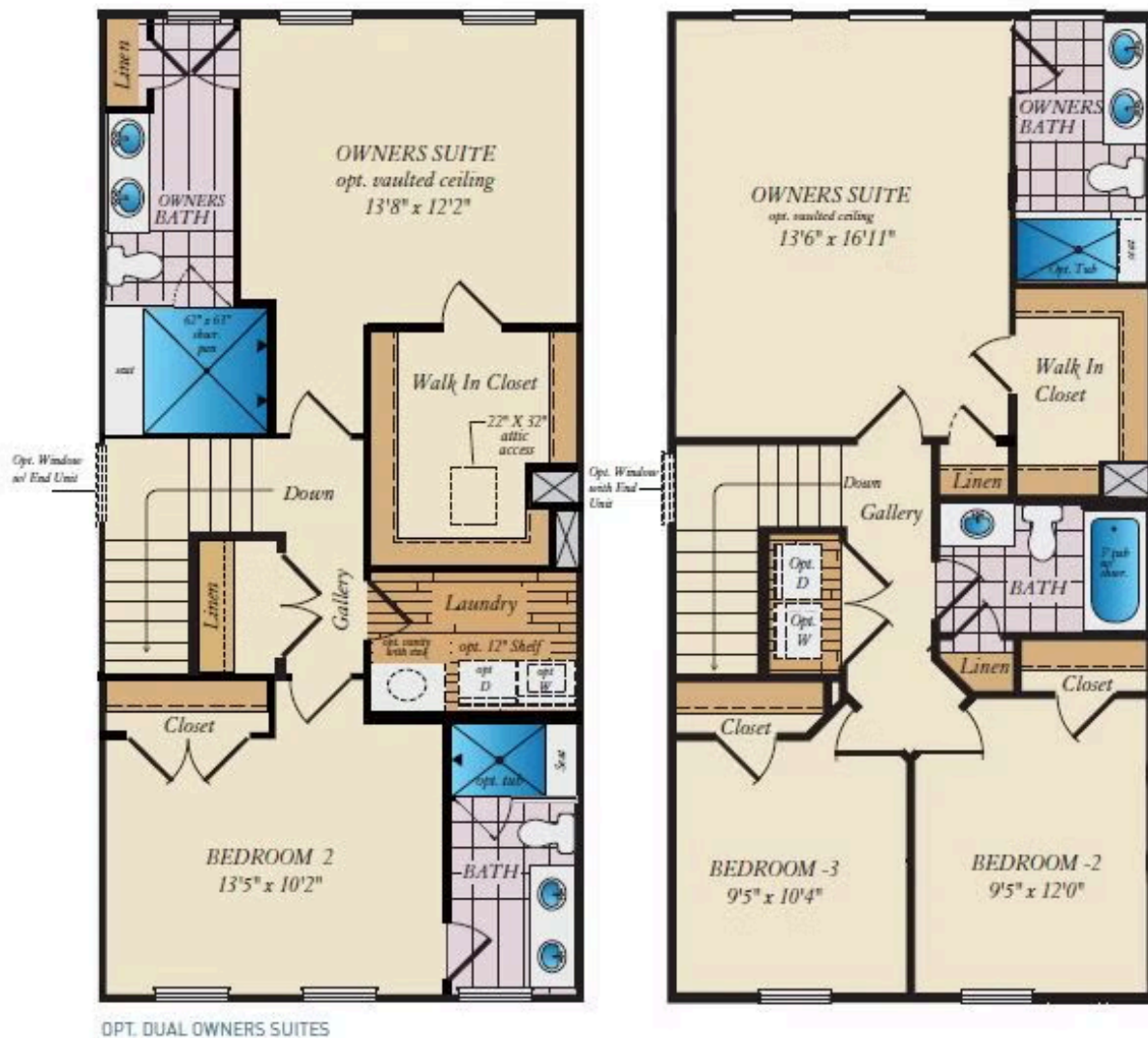
LOWER LEVEL



FIRST FLOOR



SECOND FLOOR



OPT. DUAL OWNERS SUITES