



2 - 3 Beds

2 Baths

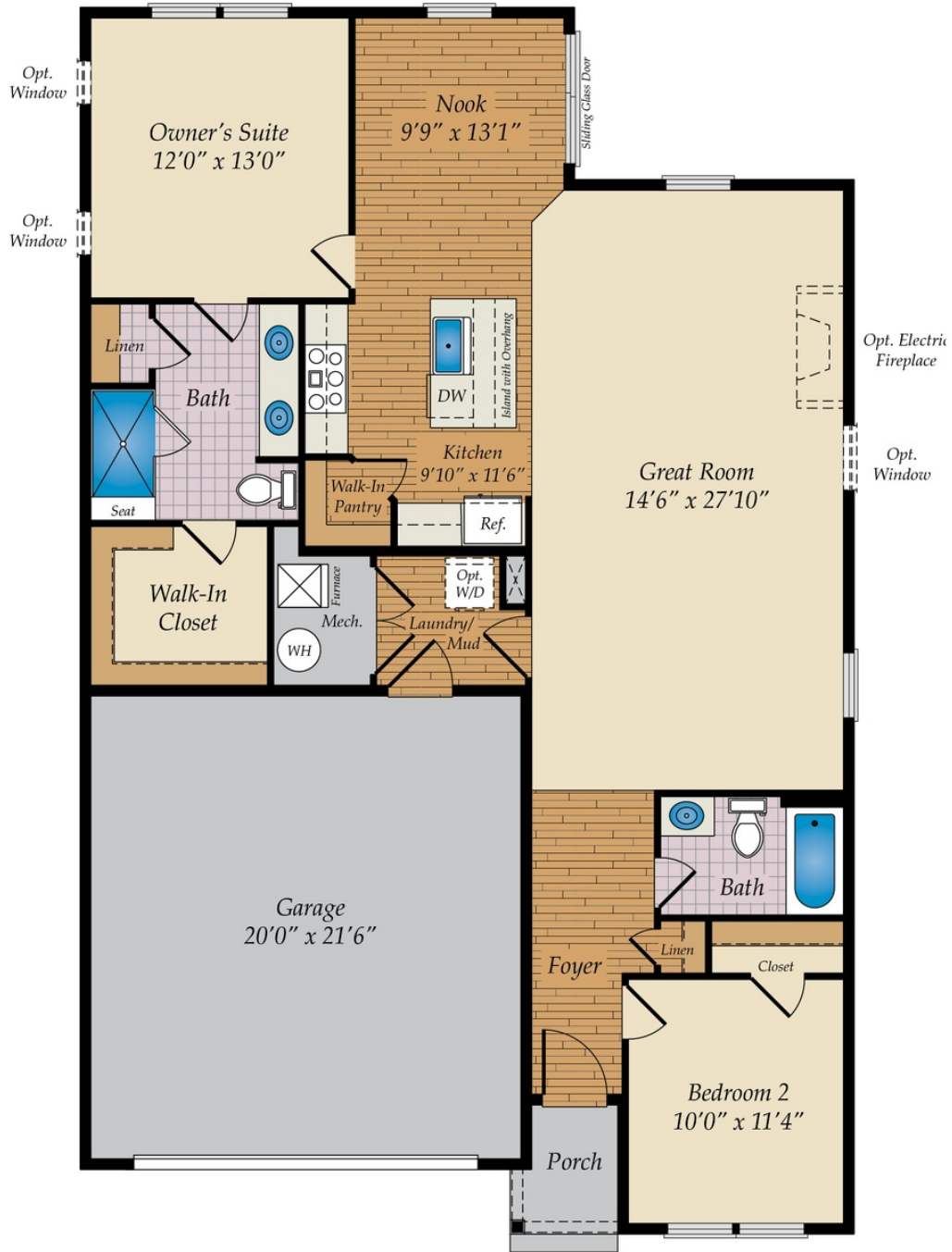
1,409 - 1,510 Sq Ft

For those who want a smaller home with a big personality, the Osmond makes great use of space within a smaller footprint. The open floor plan includes an oversize great room measuring in at a whopping 14' x 28' which you can choose to keep as an open living area or close off a portion to create a 3rd bedroom, a home office or finished storage space. The kitchen features a center island, walk-in pantry and breakfast nook with a slider that opens to an optional patio, screened porch or sunroom. The master suite includes an ensuite bath with double sinks, walk-in shower and a large walk-in closet. An extra bedroom and full bath for guests and laundry/mud room leading to a 2-car garage complete the home.

Available Elevations

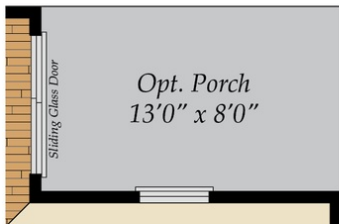


FIRST FLOOR

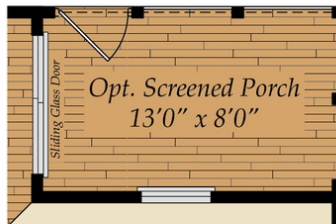


Brick/stone fronts, chimneys, bay windows, keystones, exterior trim, garage doors, light fixtures, dormers, and gables shown on elevations are optional features. Actual product specifications may vary in dimension or detail from these drawings. This insert is for illustrative purposes only and is not part of the legal contract. All dimensions are approximate. Many available options are not shown.

ADDITIONAL OPTIONS



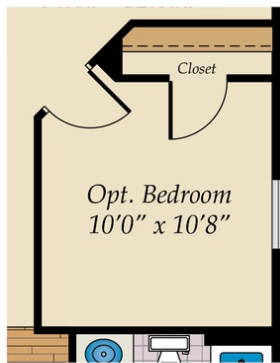
OPT. PORCH



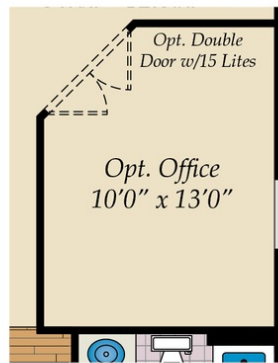
OPT. SCREENED PORCH



OPT. SUNROOM



OPT. BEDROOM



OPT. OFFICE



OPT. LUXURY OWNER'S BATH