



4 - 5 Beds

2.5 - 4 Baths

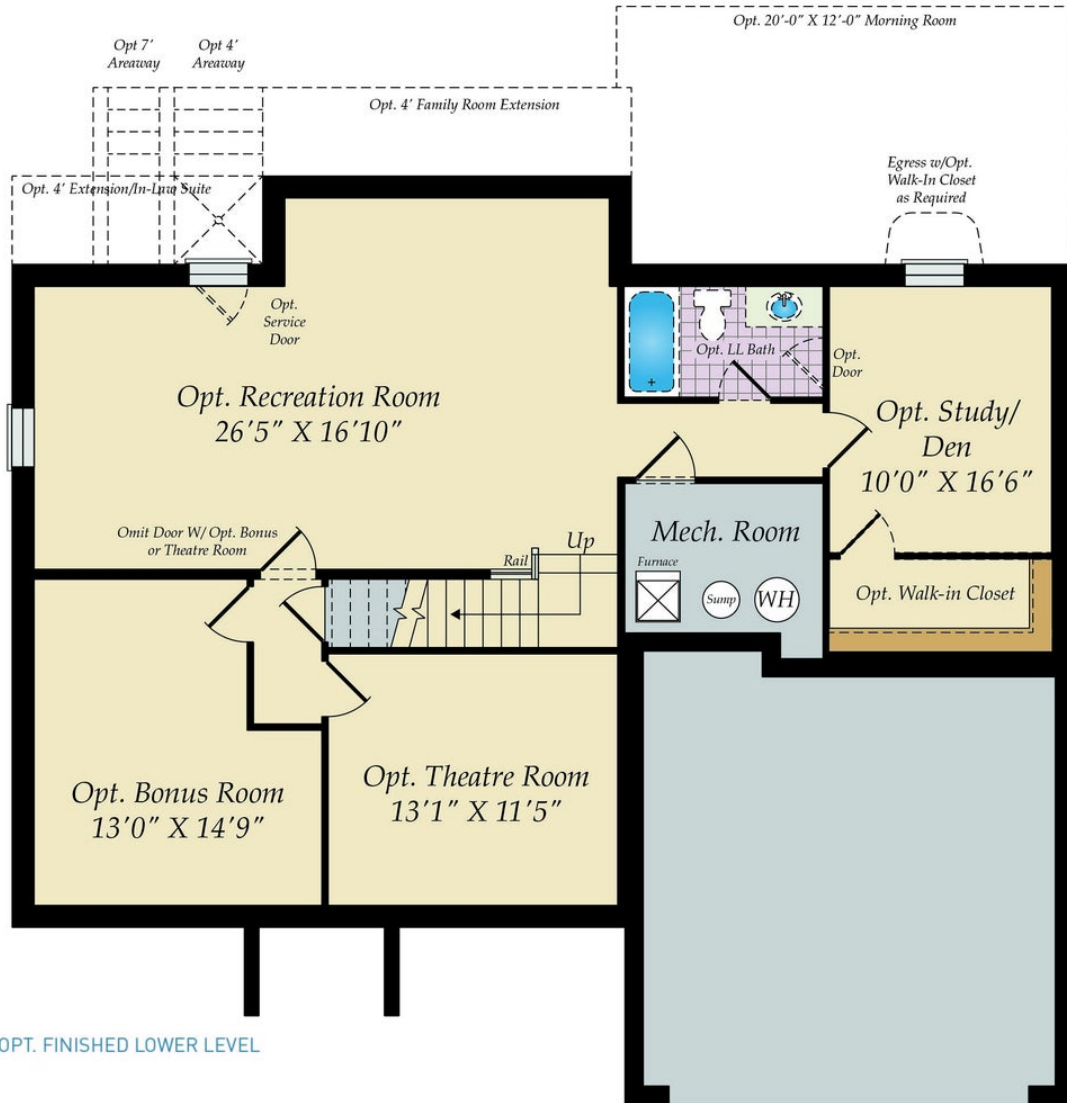
2,609 - 4,787 Sq Ft

The Oxford plan is a single family floor plan starting at 2,609 sq. ft. with the capability of up to 4,787 sq. ft. and up to 5 bedrooms. Choose from hundreds of luxury options and finishes to design a home that is uniquely yours. All our popular features are available such as a gourmet kitchen, stone or modern fireplaces, in-law suite, California spa bath, and basements made for entertaining with theater room, wet bar and much more!

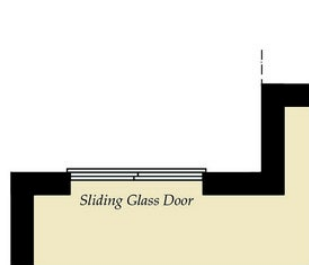
Available Elevations



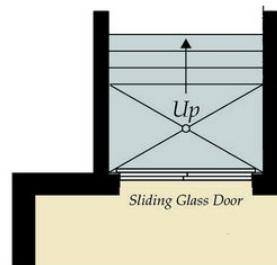
BASEMENT



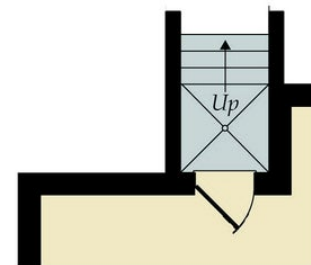
OPT. FINISHED LOWER LEVEL



OPT. WALKOUT



OPT. DOUBLE AREAWAY

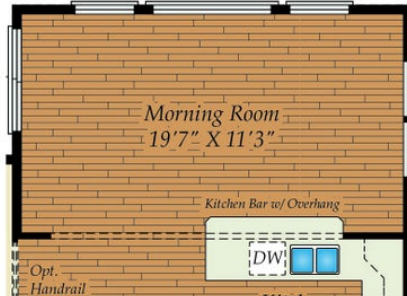


OPT. SINGLE AREAWAY

FIRST FLOOR



OPT. 4' FAMILY ROOM EXTENSION



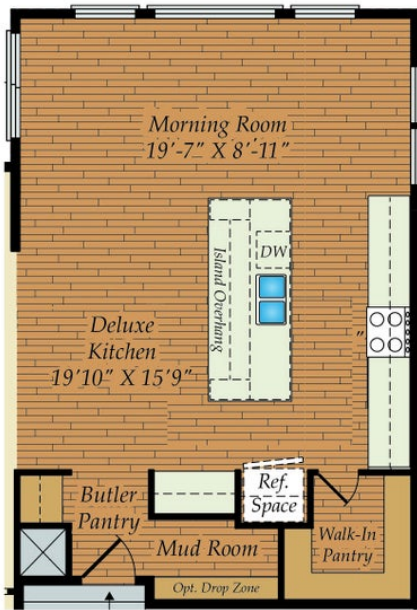
OPT. MORNING ROOM



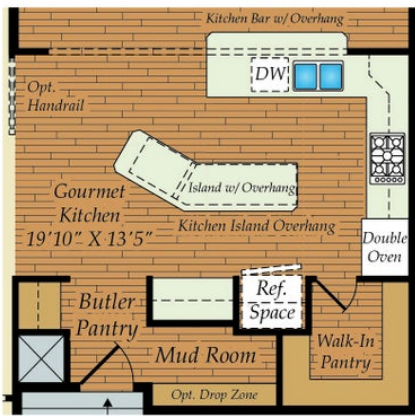
OPT. SIDE-ENTRY GARAGE

Brick/stone fronts, chimneys, bay windows, keystones, exterior trim, garage doors, light fixtures, dormers, and gables shown on elevations are optional features. Actual product specifications may vary in dimension or detail from these drawings. This insert is for illustrative purposes only and is not part of the legal contract. All dimensions are approximate. Many available options are not shown.

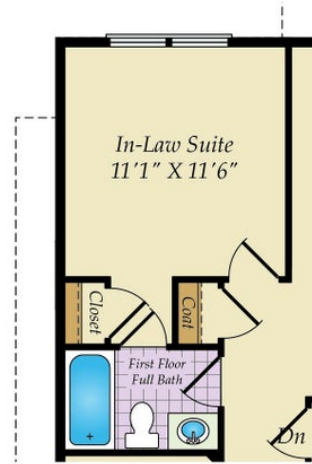
OTHER OPTIONS FIRST FLOOR PLAN



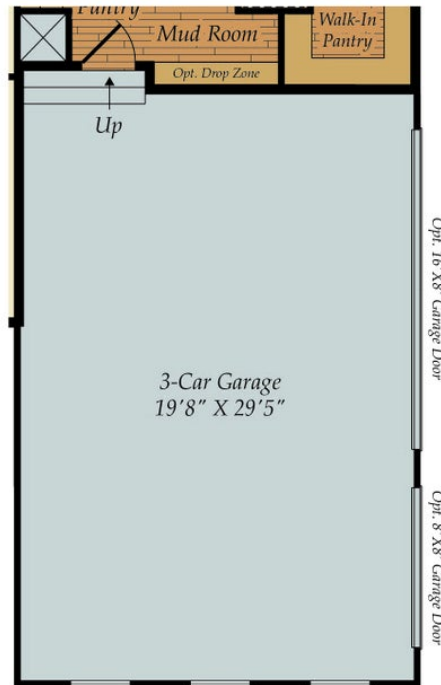
OPT. DELUXE KITCHEN W/MORNING ROOM



OPT. GOURMET KITCHEN W/ MORNING ROOM

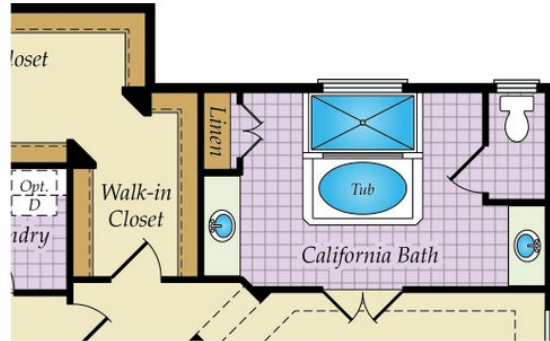


OPT. IN-LAW SUITE

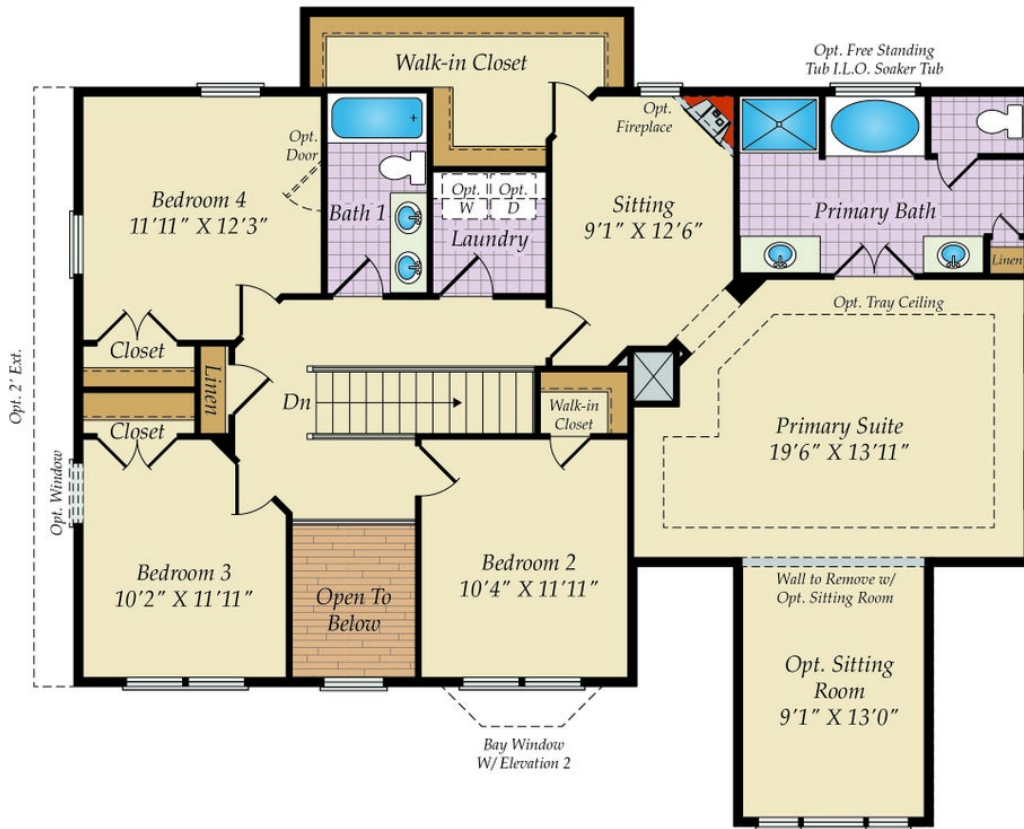


OPT. 3-CAR SIDE LOAD GARAGE

SECOND FLOOR



OPT. CALIFORNIA BATH



Brick/stone fronts, chimneys, bay windows, keystones, exterior trim, garage doors, light fixtures, dormers, and gables shown on elevations are optional features. Actual product specifications may vary in dimension or detail from these drawings. This insert is for illustrative purposes only and is not part of the legal contract. All dimensions are approximate. Many available options are not shown.

