



4 Beds

2.5 - 3 Baths

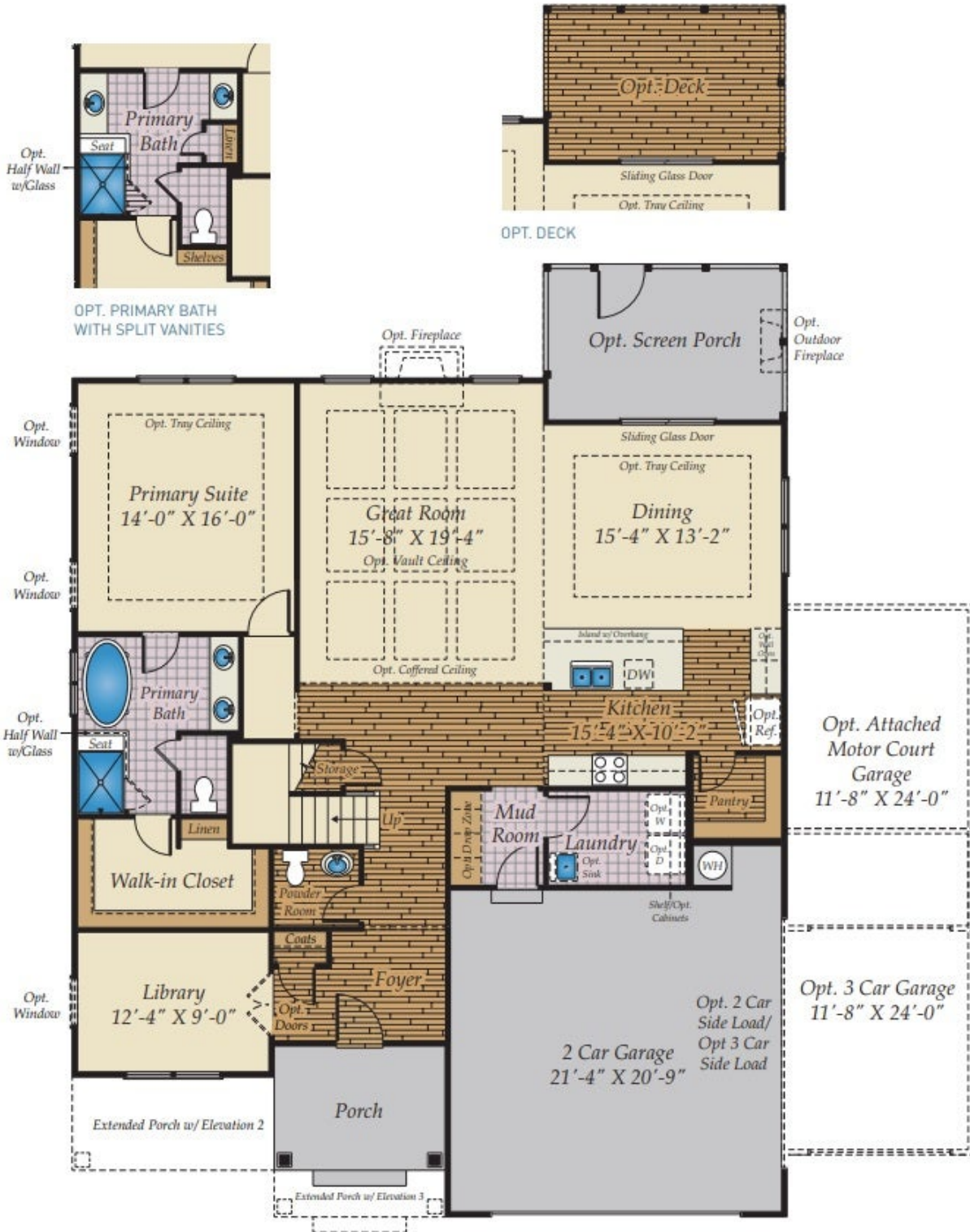
2,709 Sq Ft

Introducing our impressive new two-story Roanoke plan! The large front porch leads to the foyer and study. The family room has an optional vaulted ceiling and optional fireplace, and openly connects to the dining room and kitchen. The gourmet kitchen has a large island, kitchen backsplash and walk-in pantry. The laundry room is conveniently located on the first floor with the owner's suite, connecting to the walk-in closet and owner's bath which features a tub and walk-in shower. The remaining bedrooms are located on the second floor, along with an open loft and generously sized attic storage. Optional features include turning the attic into a bonus room, and adding an additional full bathroom upstairs.

Available Elevations



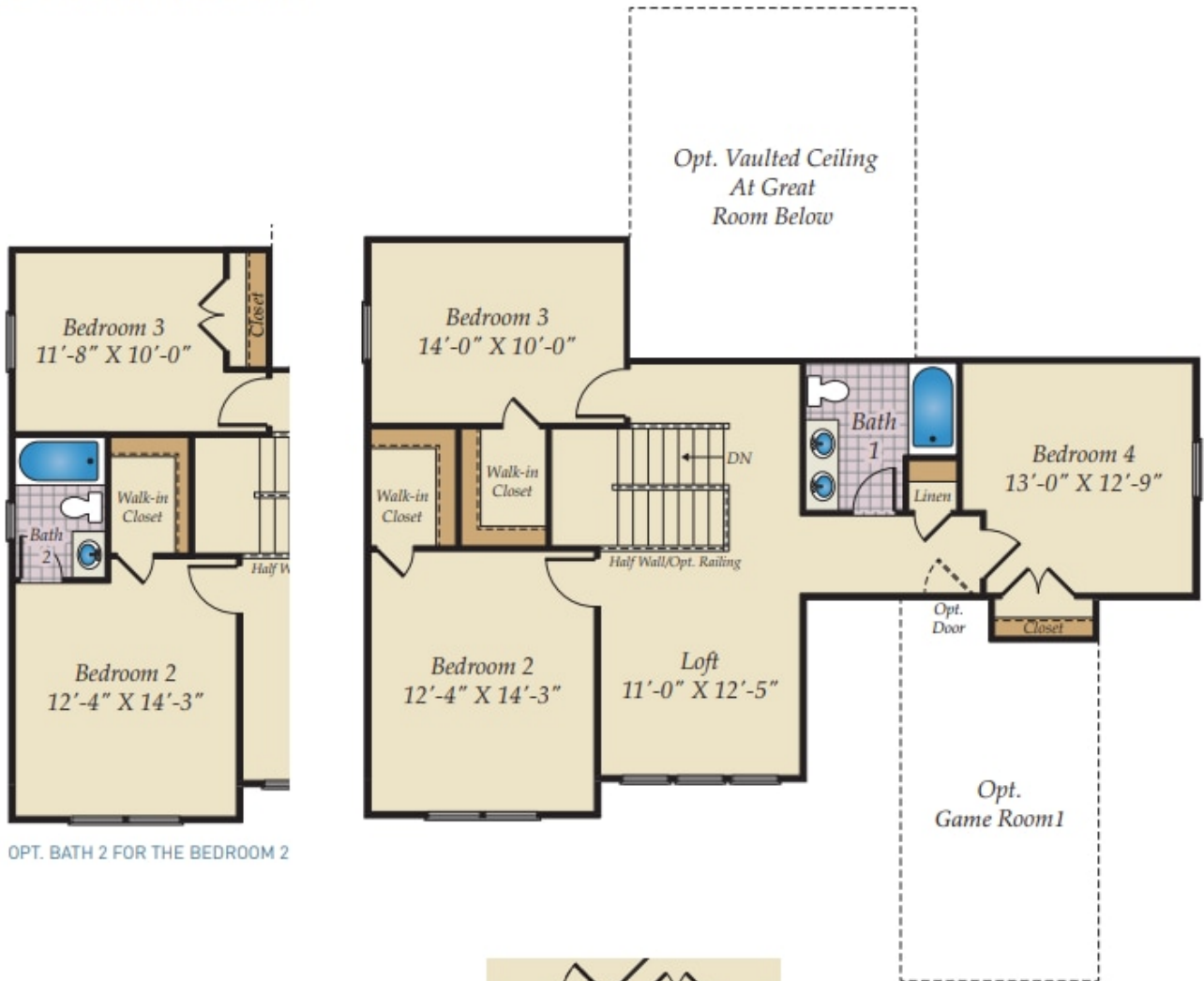
FIRST FLOOR



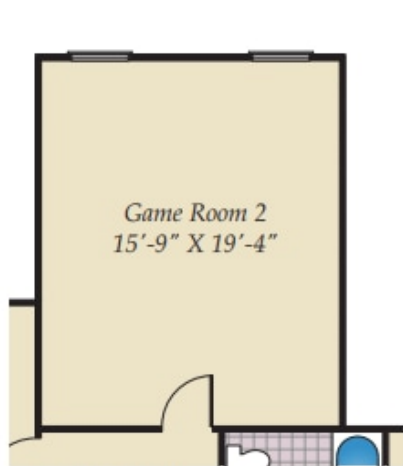
Brick/stone fronts, chimneys, bay windows, keystones, exterior trim, garage doors, light fixtures, dormers, and gables shown on elevations are optional features. Actual product specifications may vary in dimension or detail from these drawings. This insert is for illustrative purposes only and is not part of the legal contract. All dimensions are approximate. Many available options are not shown.



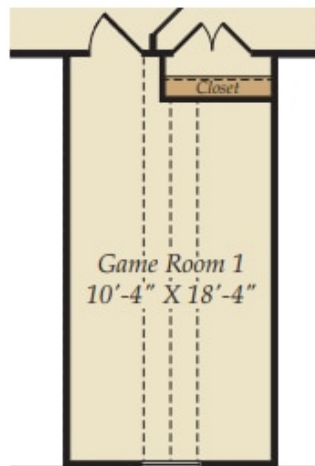
SECOND FLOOR



OPT. BATH 2 FOR THE BEDROOM 2

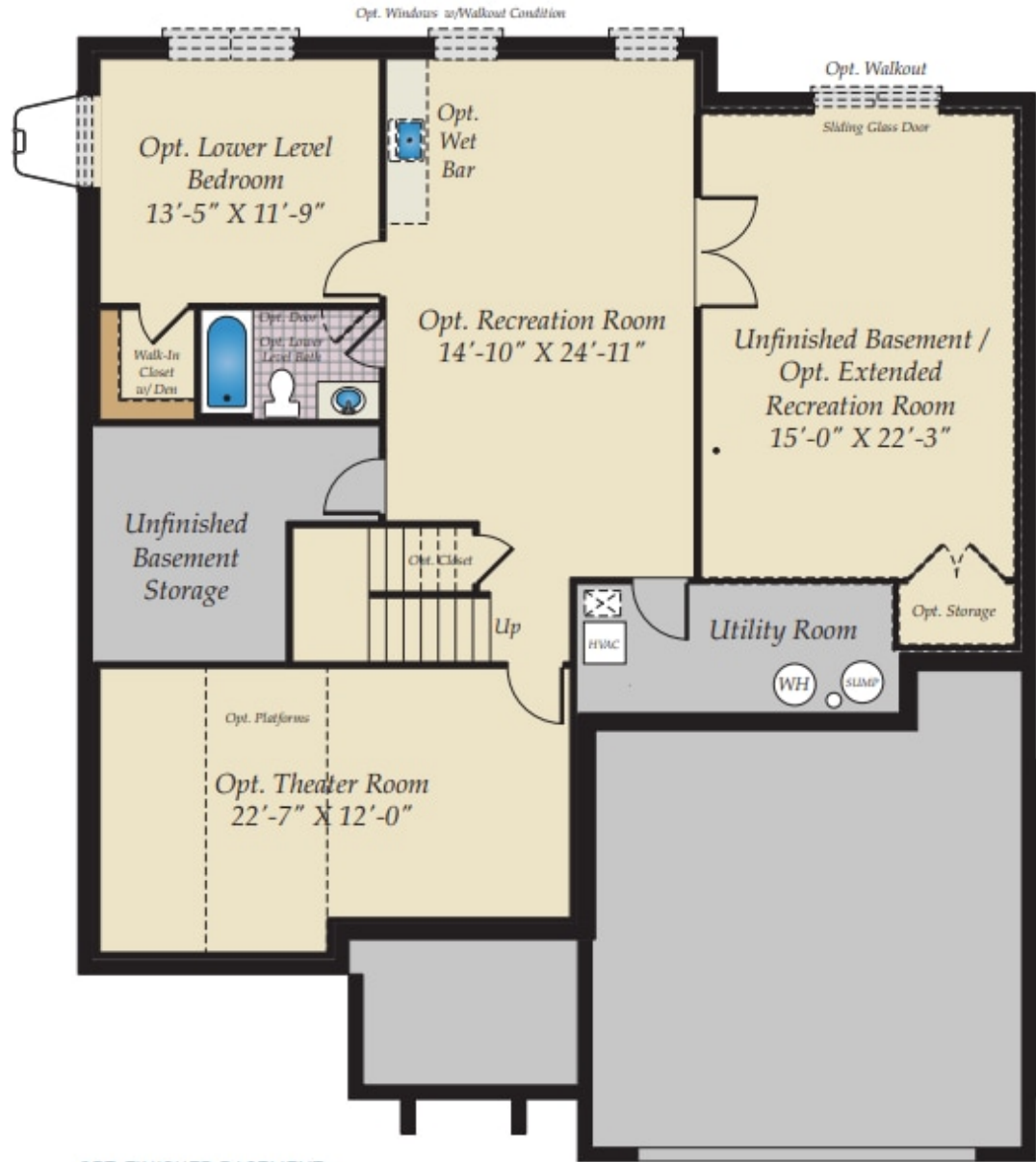


OPT. BONUS ROOM



OPT. FIN. BONUS ROOM

OPTIONAL BASEMENT



OPT. FINISHED BASEMENT