



4 Beds

2.5 Baths

2,177 Sq Ft



Introducing

by Caruso Homes--NOW Available On Your Lot!

Reward Homes offer complete packages to provide value, convenience, and a streamlined purchase process for savvy homebuyers.

The Summit is an open floor plan family home with up to five bedrooms. A spacious great room leads to a large dining and kitchen area with an island and pantry. The second level has a large owner's suite with a private bath and two walk-in closets. Three additional bedrooms along with a loft/optional 5th bedroom share a hall bath. A laundry room is also conveniently located on this level. A two-car garage is included, plus many more standard features.

Available Elevations



Elevation 1



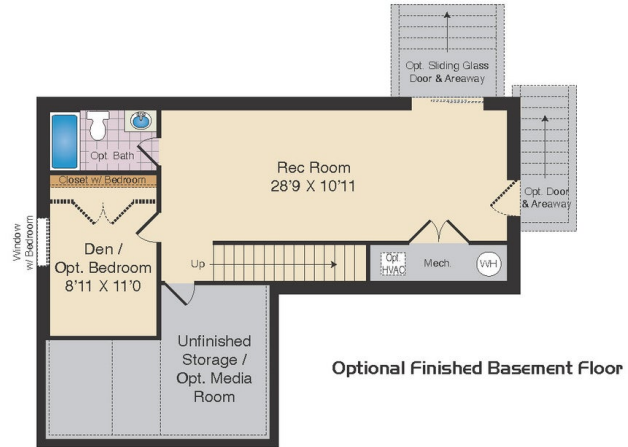
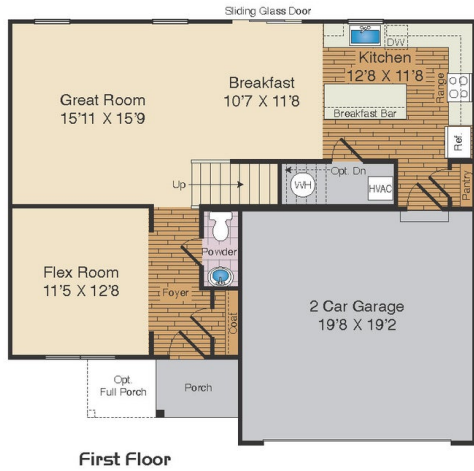
Elevation 2



Elevation 3

Brick/stone fronts, chimneys, bay windows, keystones, exterior trim, garage doors, light fixtures, dormers, and gables shown on elevations are optional features. Actual product specifications may vary in dimension or detail from these drawings. This insert is for illustrative purposes only and is not part of the legal contract. All dimensions are approximate. Many available options are not shown.

The Summit Model



These floor plan and elevations are illustrations of an artist's conception of the home and may vary in detail from specifications and/or the actual home and may be shown with options. Variations may occur due to such reasons as, but no limited to, changes made during construction process, availability of materials, our continued improvement process, etc. Room dimensions and square footage are approximate. There may be many other available options not shown. This document is for illustrative purposes only and is not part of a legal contract. 4-16-24