



3 Beds

3.0 Baths

2282 Sq Ft

ADDRESS

16404 CARIBBEAN WAY - HOMESITE 148
 ACCOKEEK, MD 20607

SALES CONTACT

301-517-7314
 INFO@CARUSOHOMES.COM

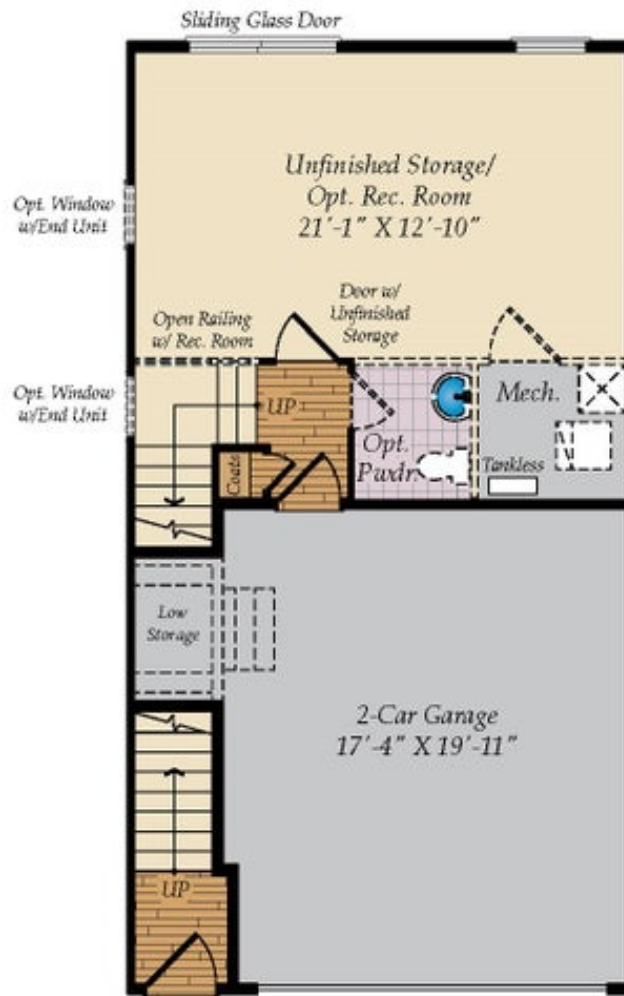
This Potomac plan is an end-unit garage townhome home with a two-car front load garage and beautiful front elevation with. Inside, the lower level contains a finished recreation room with additional powder room. The main level offers an open floorplan with a central kitchen with stainless steel appliances that are perfect for entertaining. The beautiful quartz countertops adorn the expansive kitchen island, and the farmhouse sink is sure to please any chef. The great room included an electric fireplace, perfect for relaxing. From here you can access your outdoor deck. Upstairs contains the Owner's Suite with en-suite bath and walk in closet. Two more bedrooms and another full bath finish off this level.

Photos of a similar plan used for representation only. For a complete list of included features, contact our New Home Sales Consultants.

Home Elevation

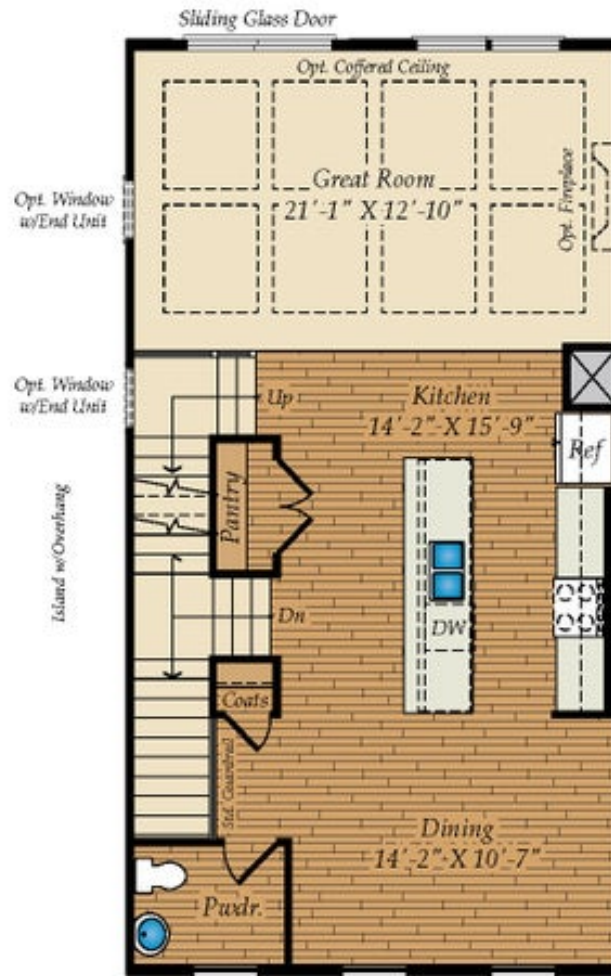


LOWER LEVEL



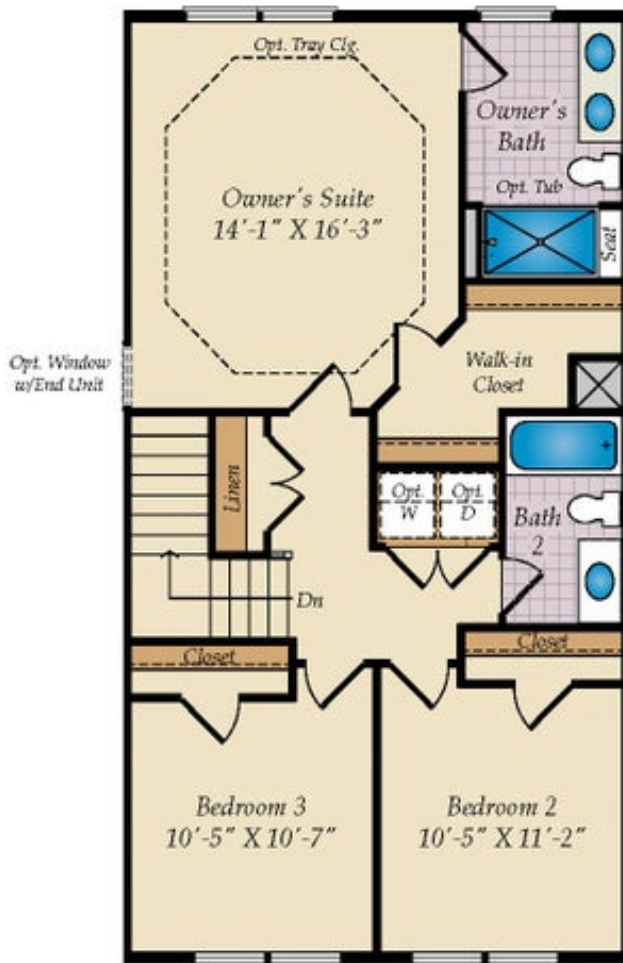
STD. LOWER LEVEL FLOOR PLAN

FIRST FLOOR

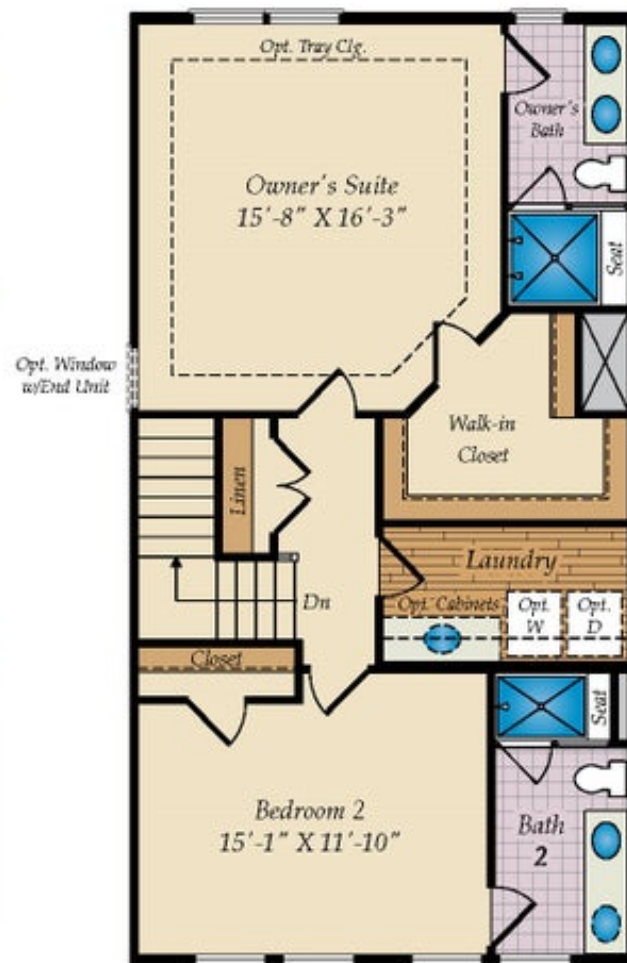


STD. FIRST FLOOR PLAN

SECOND FLOOR

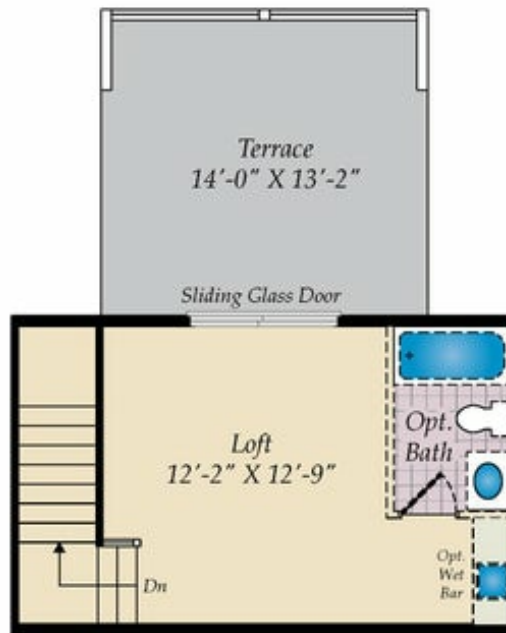


STD. SECOND FLOOR

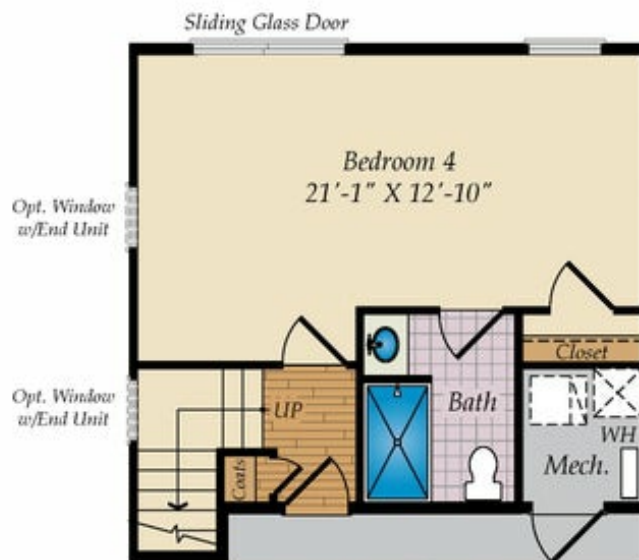


ALT. SECOND FLOOR

OPT. THIRD FLOOR & OTHER OPTIONS

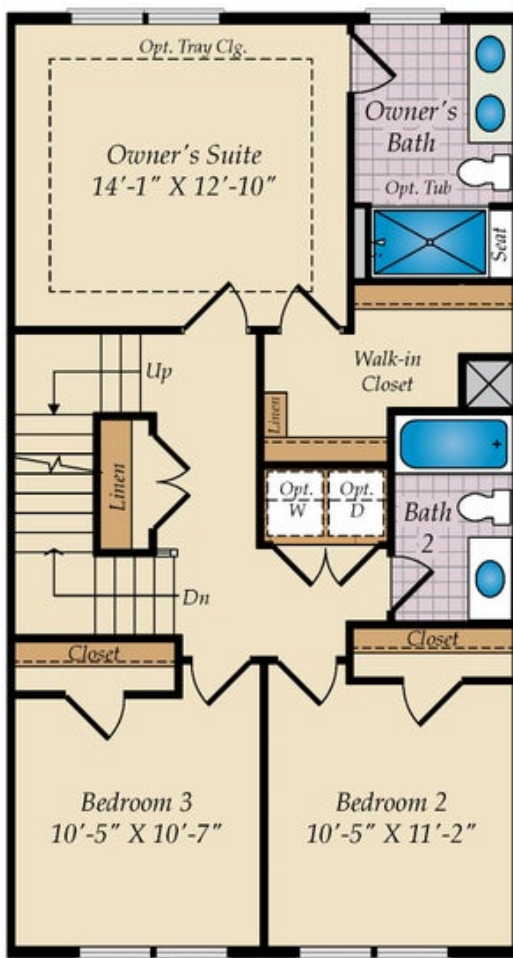


OPT. LOFT W/FULL BATH

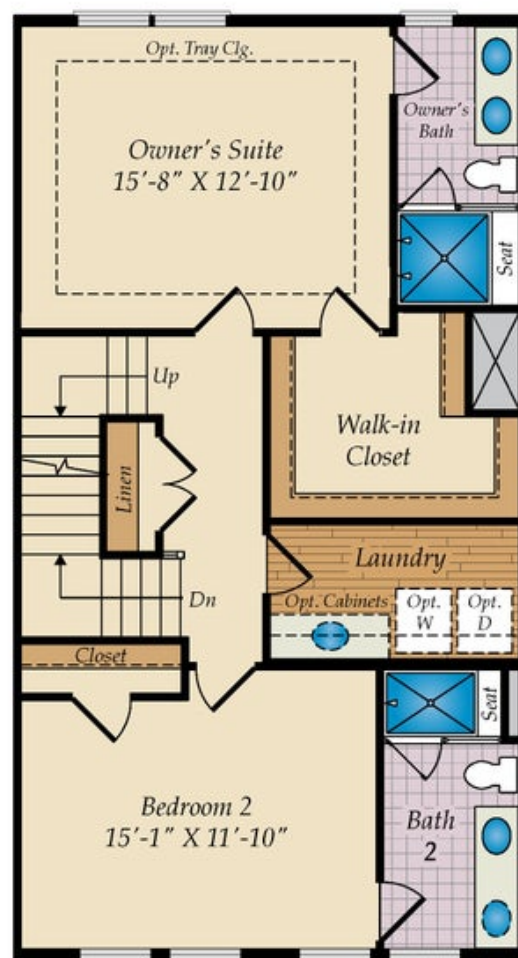


OPT. BEDROOM 4 W/BATH AT THE LOWER LEVEL

SECOND FLOOR WITH OPT. LOFT



STD. SECOND FLOOR W/OPT. LOFT STAIR



OPT. ALT. SECOND FLOOR W/OPT. LOFT STAIR