

3 Beds

3.0 Baths

2282 Sq Ft

ADDRESS

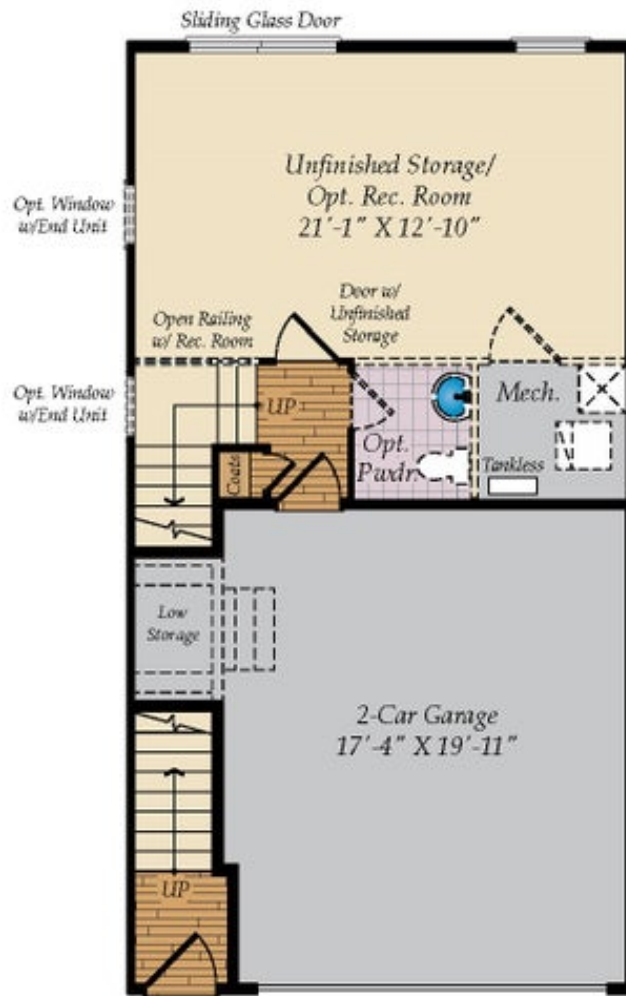
16420 CARIBBEAN WAY - HOMESITE 143
ACCOKEEK, MD 20607

SALES CONTACT

301-517-7314
INFO@CARUSOHOMES.COM

This home features the Potomac plan, an end-unit with a two-car front load garage. Inside, the main level offers an open floorplan containing the kitchen, great room with electric fireplace, and dining room. With an expansive center island, stainless steel gas appliances, and farm house sink, the kitchen is the perfect space for entertaining. The outdoor deck provides ample space for enjoying the outdoors. On the lower level, you'll find a finished recreation room with included powder room. Upstairs contains the spacious owners suite with en-suite bathroom and walk-in closet, as well as two additional bedrooms and full bath. A tray ceiling in dining room and coffered ceiling in the family room adds an extra layer of opulence. With so many grand features inside and a family-friendly community outside, you'll enjoy every moment living at Signature Club Towns. This particular home is Energy Elite Certified, designed to help you save while minimizing your environmental footprint. Some photos have been virtually staged to better showcase the true potential of rooms and spaces in the home. Contact us for a full list of included features.

LOWER LEVEL



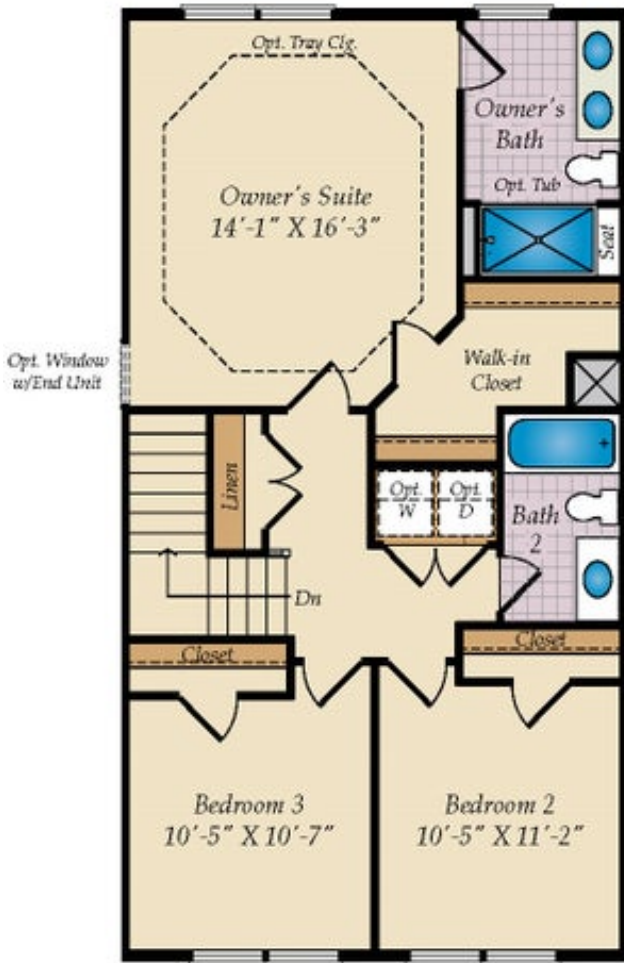
STD. LOWER LEVEL FLOOR PLAN

FIRST FLOOR

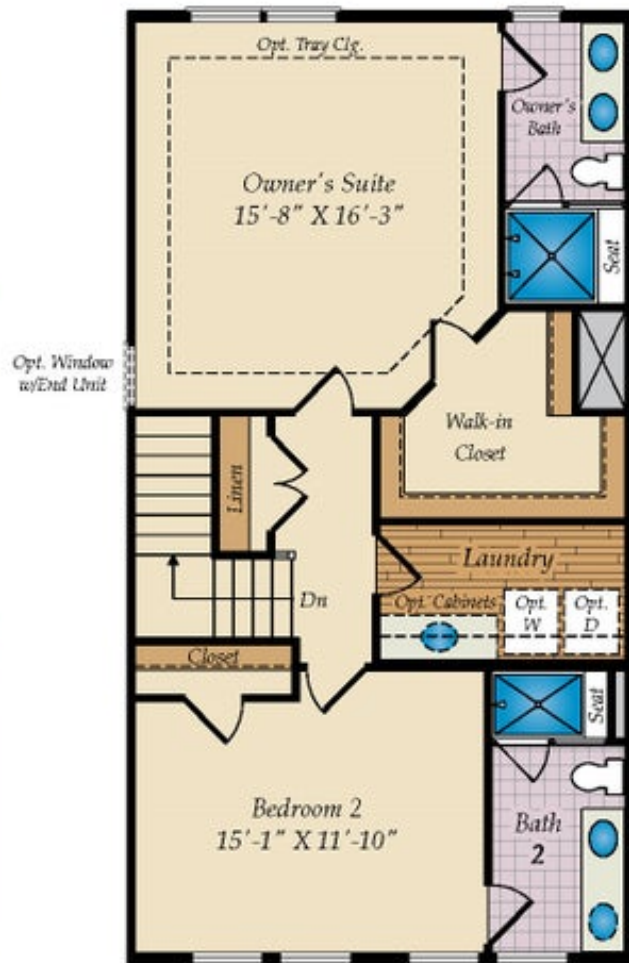


STD. FIRST FLOOR PLAN

SECOND FLOOR

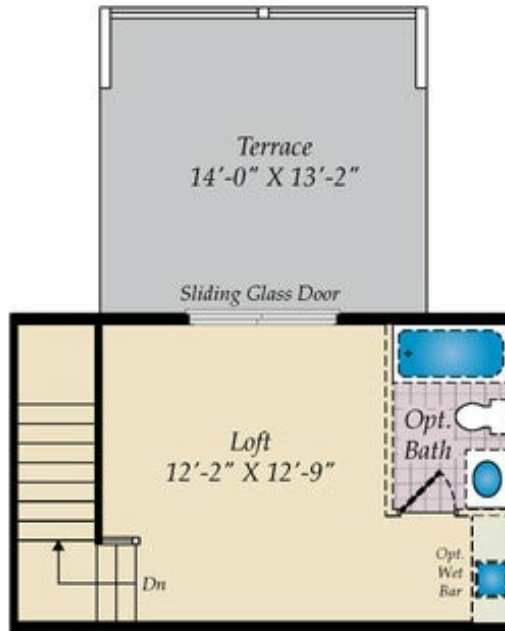


STD. SECOND FLOOR

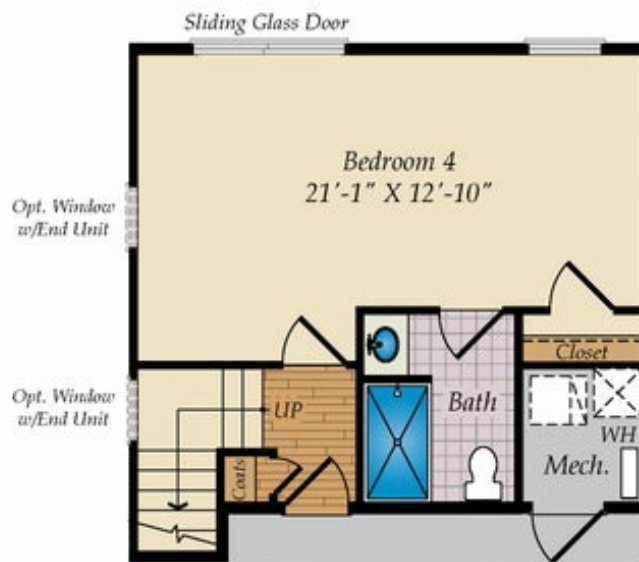


ALT. SECOND FLOOR

OPT. THIRD FLOOR & OTHER OPTIONS

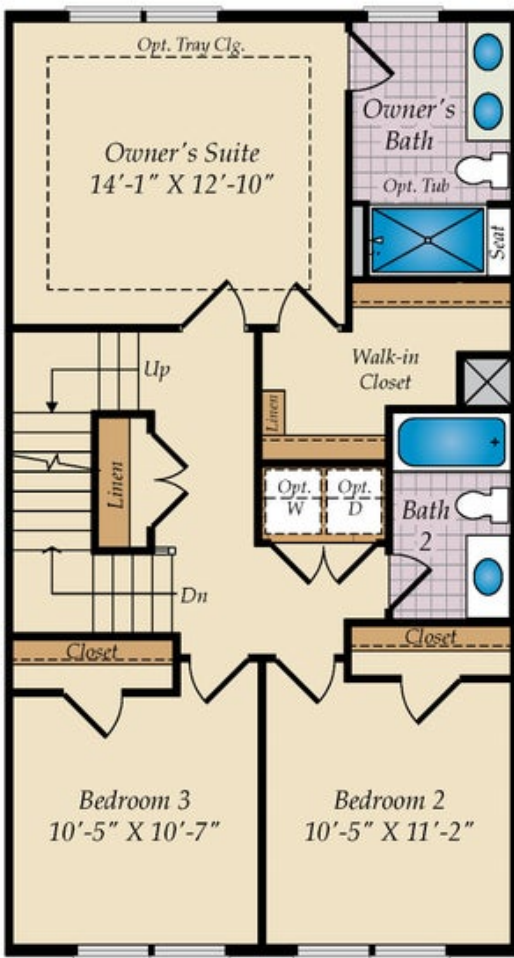


OPT. LOFT W/FULL BATH

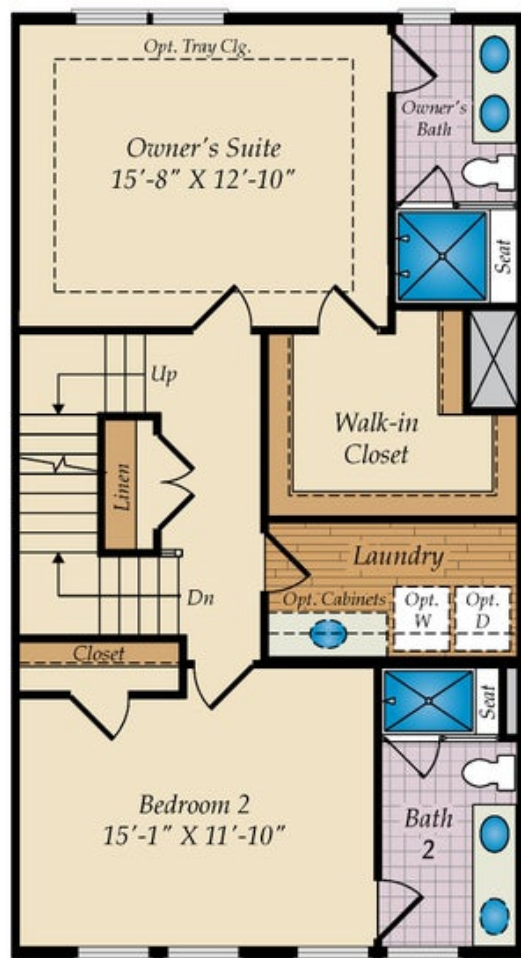


OPT. BEDROOM 4 W/BATH AT THE LOWER LEVEL

SECOND FLOOR WITH OPT. LOFT



STD. SECOND FLOOR W/OPT. LOFT STAIR



OPT. ALT. SECOND FLOOR W/OPT. LOFT STAIR