

**3 Beds**

**2.5 - 4.5 Baths**

**2,282 - 2,607 Sq Ft**

**COMMUNITY CONTACT**

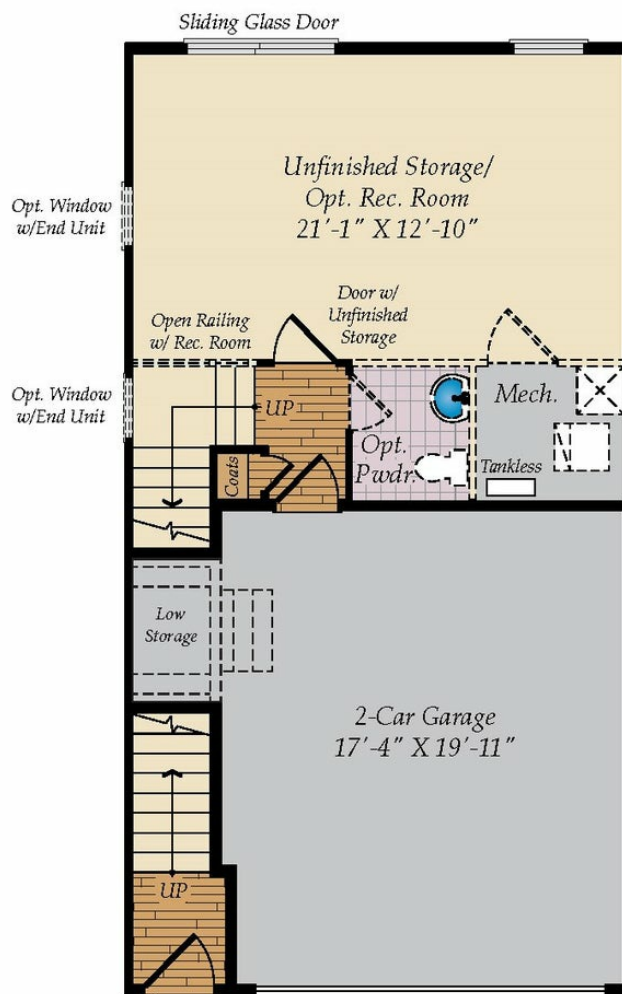
16623 TORTOLA DRIVE  
ACCOKEEK, MD 20607  
301-517-7314  
INFO@CARUSOHOMES.COM

The Potomac plan is a garage townhome home with up to 2,607 square feet of living space, a two-car front load garage and several classic elevations to choose from. Inside, the main level offers an open floorplan with a central kitchen that is perfect for entertaining. The home comes standard with 3 bedrooms and 2.5 baths with the option to finish a rec room and additional bath on the bottom level. The Potomac also offers an optional 3rd floor loft which includes a bonus room, a full bath and an optional balcony. Choose from many options and finishes to reflect your personality and make this home your own. Photos of a similar plan used for representation only.

## Available Elevations

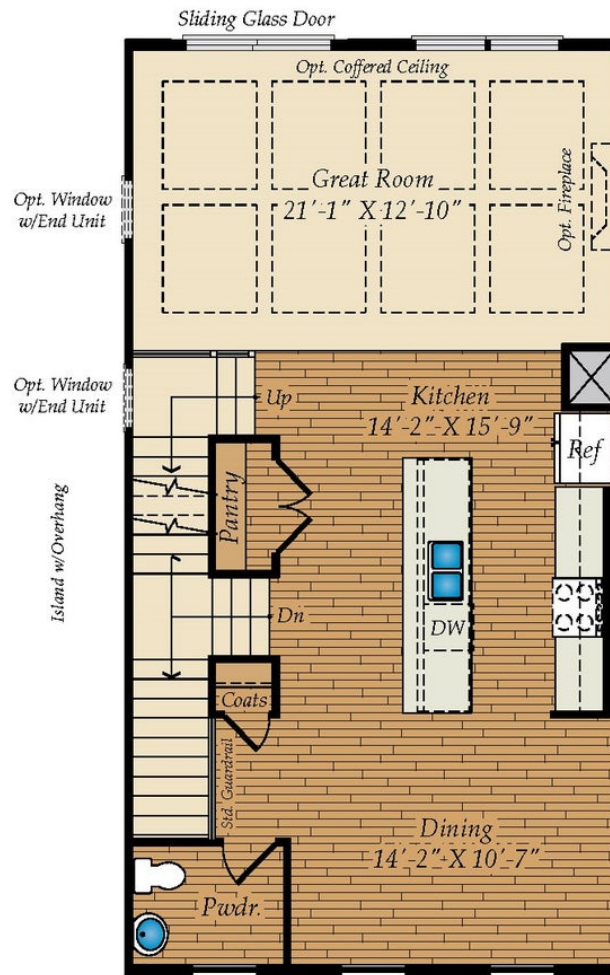


# LOWER LEVEL



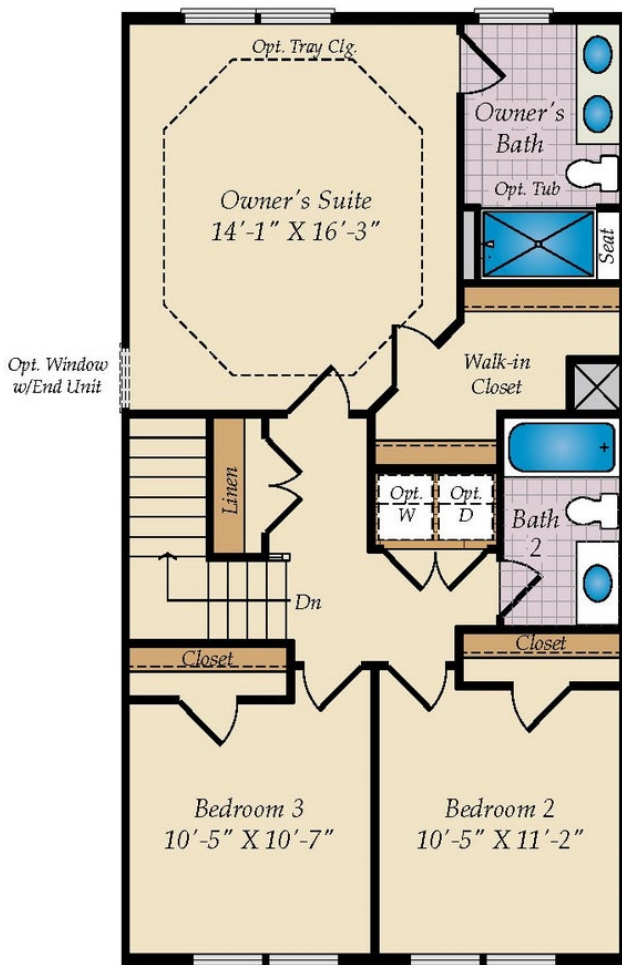
STD. LOWER LEVEL FLOOR PLAN

# FIRST FLOOR

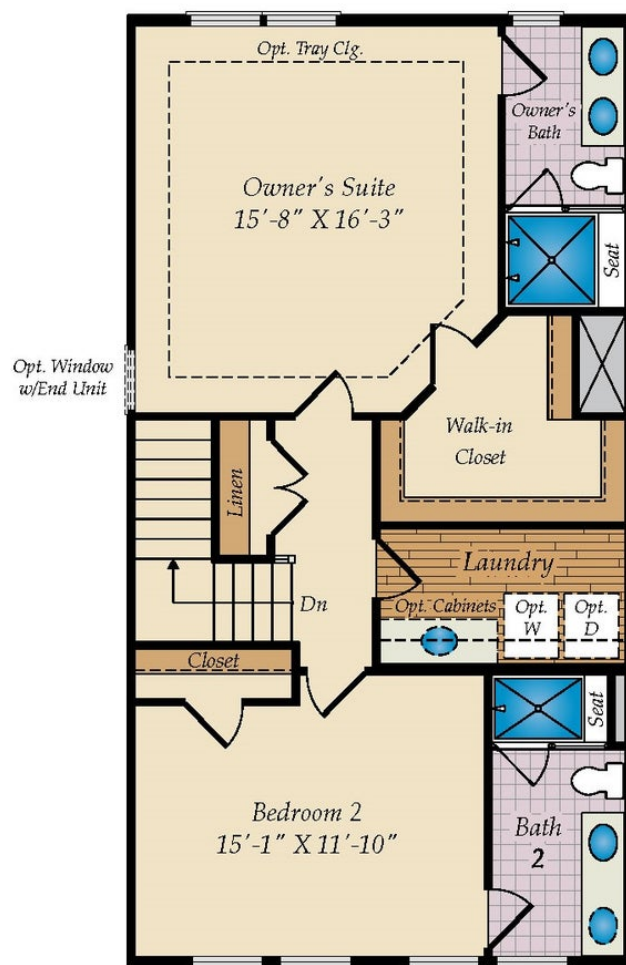


STD. FIRST FLOOR PLAN

# SECOND FLOOR

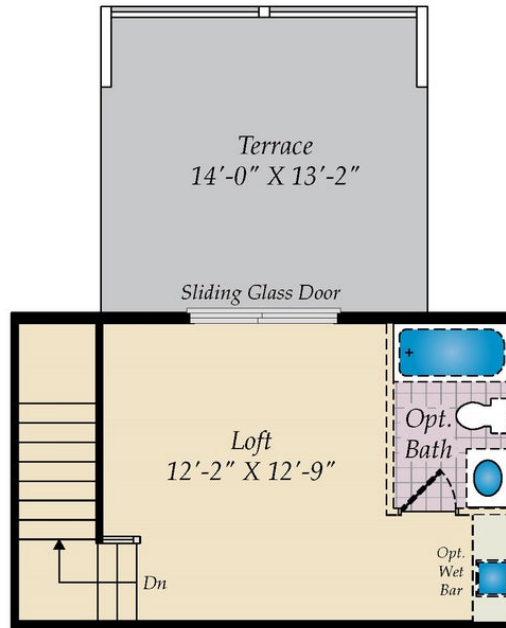


STD. SECOND FLOOR

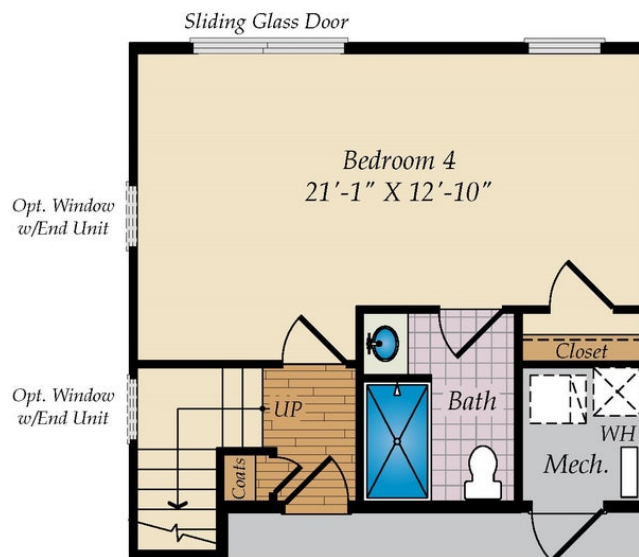


ALT. SECOND FLOOR

## OPT. THIRD FLOOR & OTHER OPTIONS

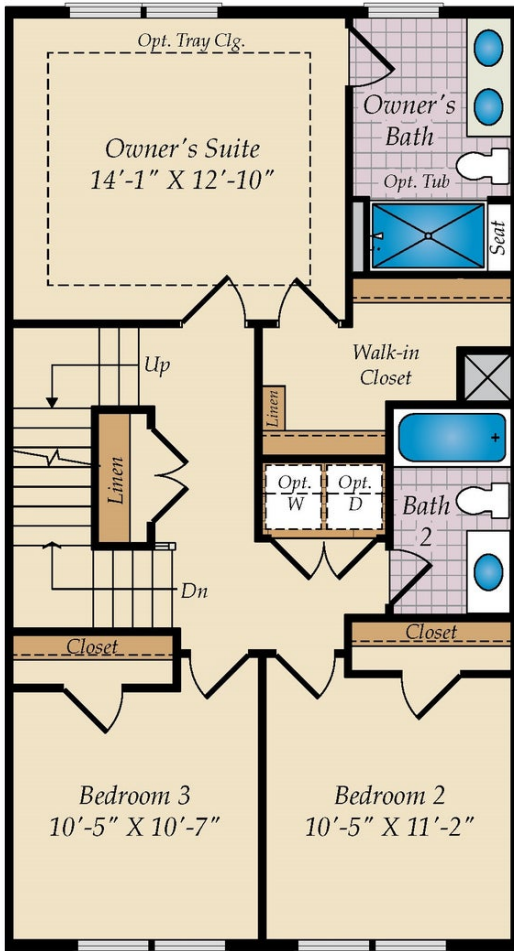


OPT. LOFT W/FULL BATH

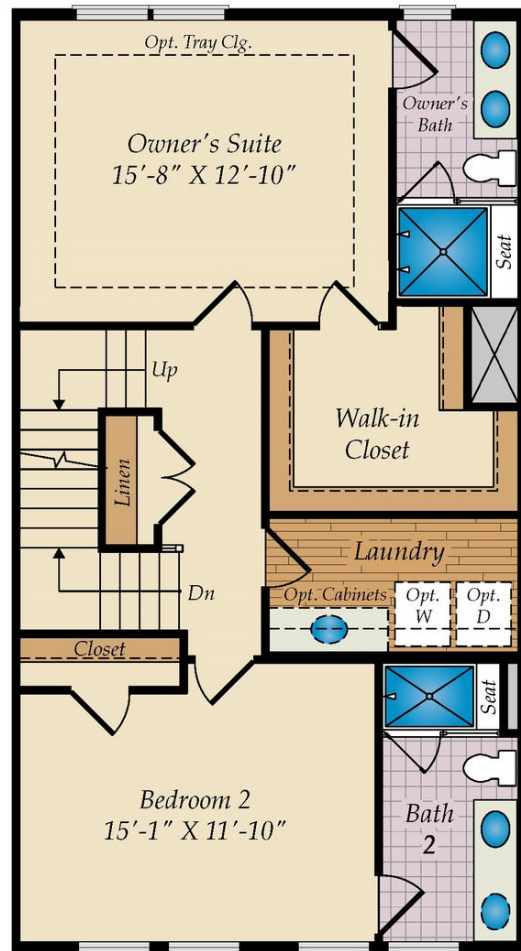


OPT. BEDROOM 4 W/BATH AT THE LOWER LEVEL

## SECOND FLOOR WITH OPT. LOFT



STD. SECOND FLOOR W/OPT. LOFT STAIR



OPT. ALT.. SECOND FLOOR W/OPT. LOFT STAIR