



5 Beds

4.5 Baths

5338 Sq Ft

ADDRESS

3906 DIPLOMAT AVE - HOMESITE 60A
BOWIE, MD 20721

SALES CONTACT

301-517-7314
INFO@CARUSOHOMES.COM

The Kingsport II at Fairview Manor is a beautiful brick front home, complete with two-car front load garage. In addition to all included standard features, this home also features the following:

- Family Room with Extension, Coffered Ceiling, Gas Fireplace and Morning Room Addition
- Deluxe Gourmet Kitchen with Upgraded Stainless Steel Appliances and Expansive Kitchen Island
- In-Law Suite on Main Level with included Full Bathroom
- Primary Bedroom with En-Suite California Bath and Walk-In Closet
- Finished Lower Level including 9' Ceilings, Recreation Room, Full Bath, and Den Addition
- Upgraded Flooring Throughout

At Fairview Manor enjoy living in a prime location, just minutes from shopping, dining, recreational parks, and more, placing every convenience within easy reach. Enjoy seamless commutes to Joint Base Andrews, Fort Meade, Washington D.C., Annapolis, and beyond.

This Kingsport II home is currently under construction. Photos of similar home are for representation only and may show options or upgrades not included in this home. See New Home Sales Consultant for a complete list of included features.

Home Elevation

FIRST FLOOR



OPT. SCREENED PORCH



OPT. MORNING ROOM
(Shown with Opt. Deluxe Kitchen)



OPT. IN-LAW SUITE



OPT. CONSERVATORY



Brick/stone fronts, chimneys, bay windows, keystones, exterior trim, garage doors, light fixtures, dormers, and gables shown on elevations are optional features. Actual product specifications may vary in dimension or detail from these drawings. This insert is for illustrative purposes only and is not part of the legal contract. All dimensions are approximate. Many available options are not shown.

SECOND FLOOR



OPT. SITTING ROOM W/
2 CAR SIDE LOAD GARAGE



OPT. BUDDY BATH



OPT. 3RD BATH



OPT. CALIFORNIA BATH



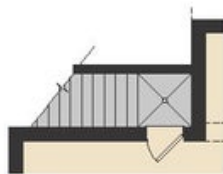
OPT. CONSERVATORY BELOW



OPT. CARIBBEAN BATH

Brick/stone fronts, chimneys, bay windows, keystones, exterior trim, garage doors, light fixtures, dormers, and gables shown on elevations are optional features. Actual product specifications may vary in dimension or detail from these drawings. This insert is for illustrative purposes only and is not part of the legal contract. All dimensions are approximate. Many available options are not shown.

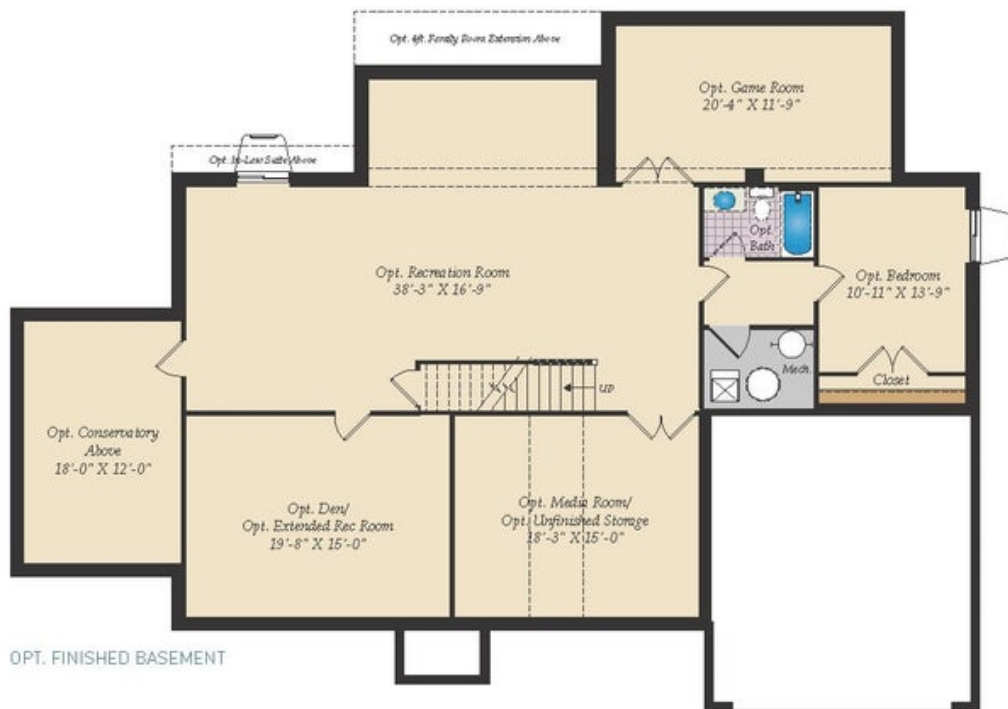
BASEMENT



OPT. SINGLE AREAWAY



OPT. DOUBLE AREAWAY



OPT. FINISHED BASEMENT