



4 - 5 Beds

2.5 - 4 Baths

2,221 - 3,956 Sq Ft

COMMUNITY CONTACT

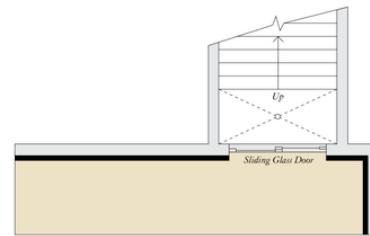
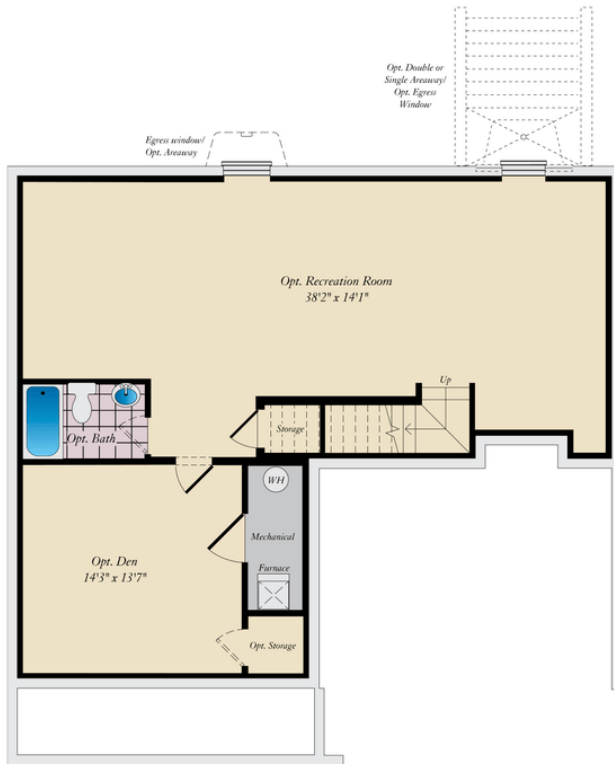
14000 PECAN RIDGE WAY
BOWIE, MD 20715
(301) 517-7314
INFO@CARUSOHOMES.COM

The Deerfield is a four bedroom floor plan with the option to add an In-Law suite downstairs. Enjoy gathering with family and friends in this open concept home which features a large great room that flows right into the kitchen. A 9 foot island and plenty counter space will please the chef and a formal dining room is perfect for serving up family meals. Upstairs, the large owner's suite offers an ensuite bath with his and her walk-in closets. Three additional bedrooms, a hall bath and a convenient laundry room complete the second floor. An optional third floor provides a loft and full bath for additional living space. Plenty of options and upgrades are available to personalize this home and make it your own!

Available Elevations



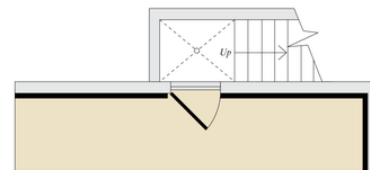
BASEMENT AND OPTIONAL ATTIC



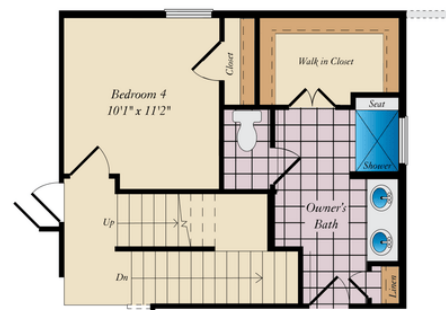
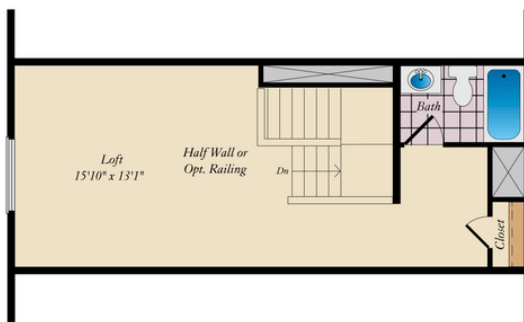
OPT. DOUBLE AREAWAY



OPT. WALKOUT

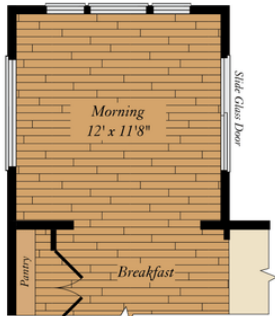


OPT. SINGLE AREAWAY

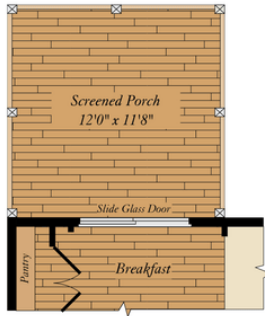


OPT. ATTIC STAIR

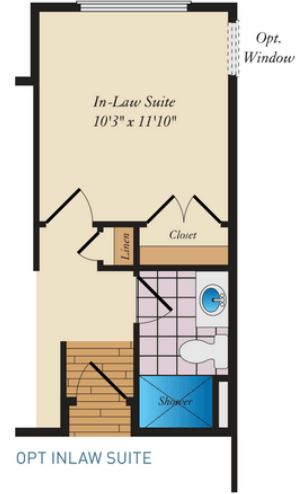
FIRST FLOOR



OPT MORNING ROOM



OPT SCREENED PORCH



OPT INLAW SUITE



Brick/stone fronts, chimneys, bay windows, keystones, exterior trim, garage doors, light fixtures, dormers, and gables shown on elevations are optional features. Actual product specifications may vary in dimension or detail from these drawings. This insert is for illustrative purposes only and is not part of the legal contract. All dimensions are approximate. Many available options are not shown.

SECOND FLOOR

