



CRAFTSMAN COLLECTION
EMORY II - CRAFTSMAN
FOR SALE IN PRINCE GEORGES, MD

QUESTIONS? ASK CATHARINE
(301) 517-7314



4 - 5 Beds

2.5 - 4.5 Baths

2,858 - 5,431 Sq Ft

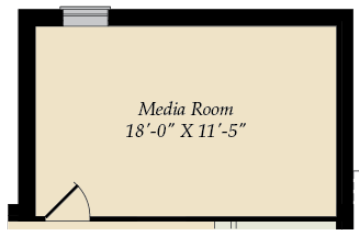
COMMUNITY CONTACT

14000 PECAN RIDGE WAY
BOWIE, MD 20715
(301) 517-7314
INFO@CARUSOHOMES.COM

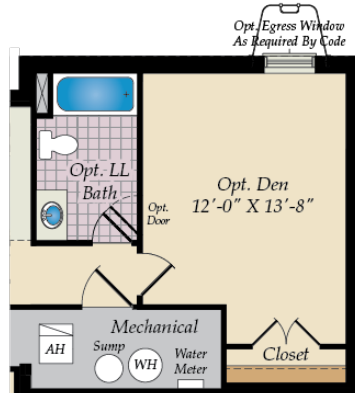
The popular Emory II Craftsman plan is a single family home starting at 2,962 square feet, with options to expand up to 5,375 square feet of living space. The home has a two car garage and many elevations, including brick and stone combination fronts and craftsman styles. Inside, the home comes standard with 4 bedrooms and 2.5 baths with the option to add an additional bedroom and full bath in the basement. This dream home offers many upgrades such as a gourmet kitchen, stone or modern fireplace and a grand owner suite with optional spa bath. Choose from hundreds of features to personalize this home and make it your own.



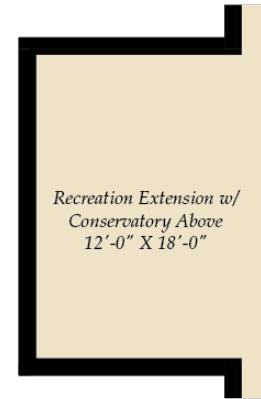
BASEMENT



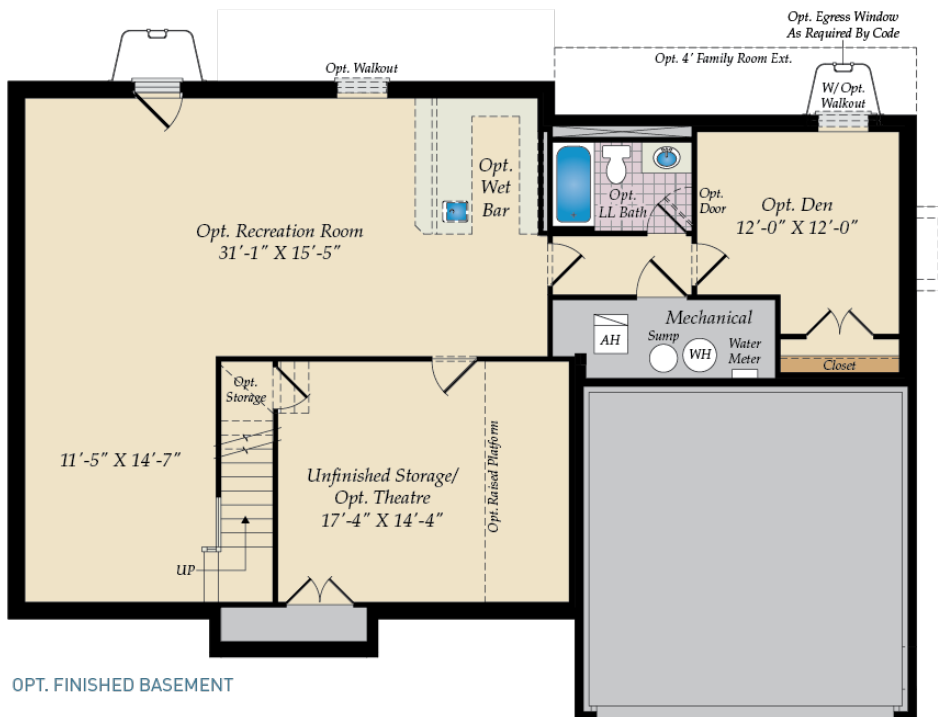
OPT. MEDIA ROOM W/MORNING ROOM ABOVE



OPT. DEN EXTENSION W/GREAT ROOM EXT. ABOVE



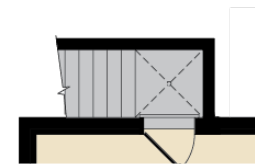
OPT. REC. EXTENSION W/ CONSERVATORY ABOVE



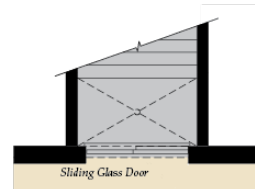
OPT. FINISHED BASEMENT



OPT. WALKOUT BASEMENT

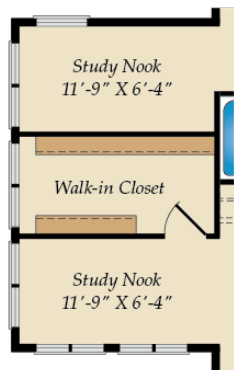
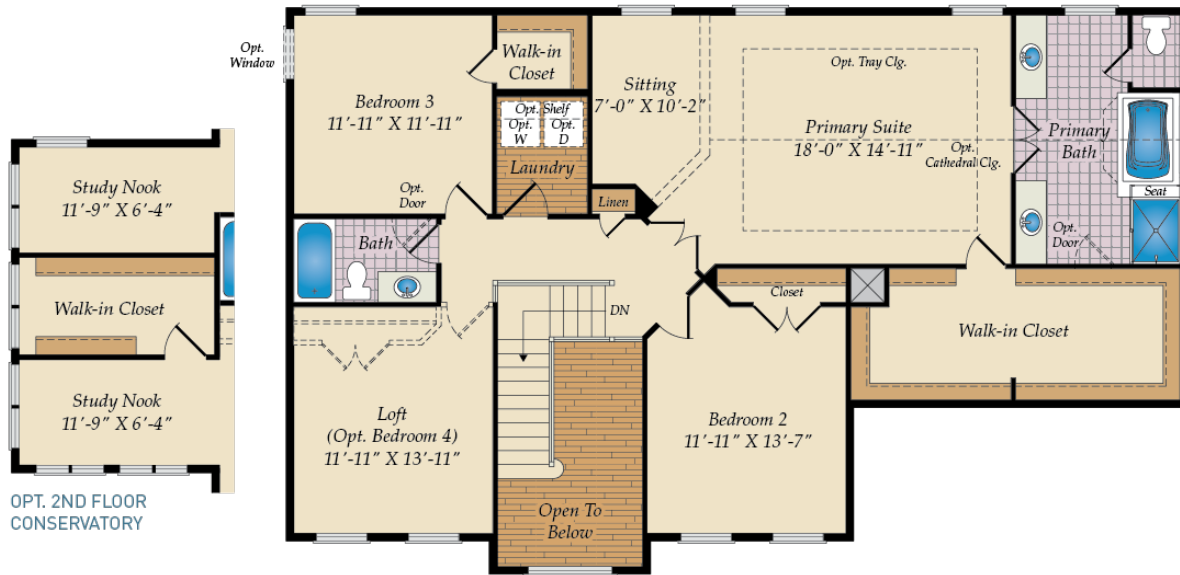


OPT. SINGLE AREAWAY

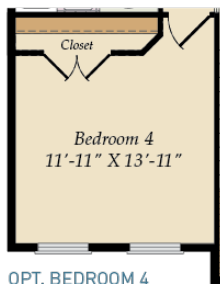


OPT. DOUBLE AREAWAY

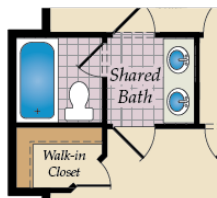
SECOND FLOOR



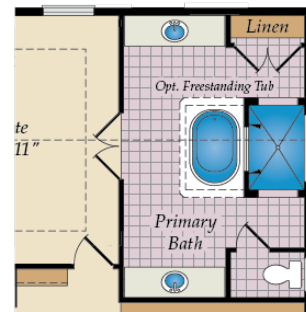
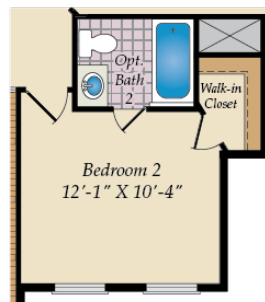
OPT. 2ND FLOOR CONSERVATORY



OPT. BEDROOM 4



OPT. SHARED BATH SHOWN WITH OPTIONAL BATH 2



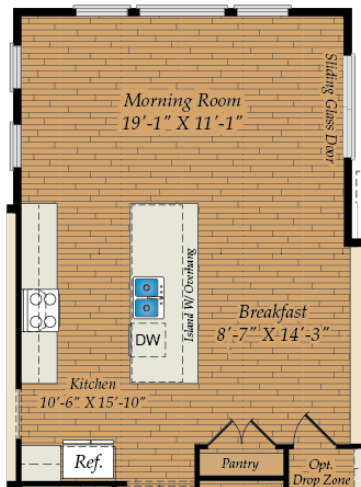
OPT. WALK-THRU SHOWER BATH

FIRST FLOOR

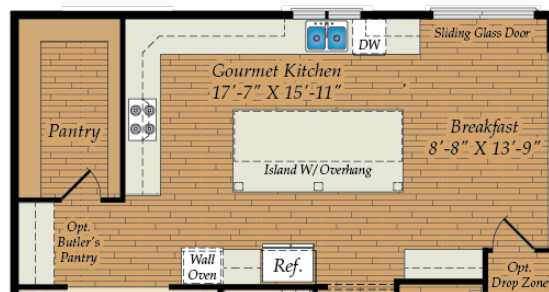


OPT. CONSERVATORY

OPT. 2-CAR SIDE LOAD GARAGE



OPT. MORNING ROOM



OPT. GOURMET KITCHEN