

**5 Beds****4.5 Baths****4306 Sq Ft****ADDRESS**12412 LUSBYS LANE - HOMESITE 13
BRANDYWINE, MD 20613

This Emory II located in the Summergreen Estates community offers a craftsman exterior with partial stone, 5 bedrooms, 4.5 baths, and a 2 car garage. A two-story foyer welcomes you with beautiful oak stairs with iron rails, with 9ft ceilings throughout providing a spacious backdrop. Included in this home is a deluxe gourmet kitchen with a center island, stainless steel gas appliances, farmhouse sink, quartz countertops and white cabinetry. The kitchen opens to a morning room and a family room with electric fireplace, and an additional extension, providing even more space for you and your family. Upstairs, the primary suite offers a spa bath with freestanding tub and walk-thru shower. Three additional bedrooms complete this level - one with a private bath and two share a buddy bath. Also upstairs is a convenient laundry room. The finished basement features a rec room, a theater room with platform, a 5th bedroom, and a full bath.

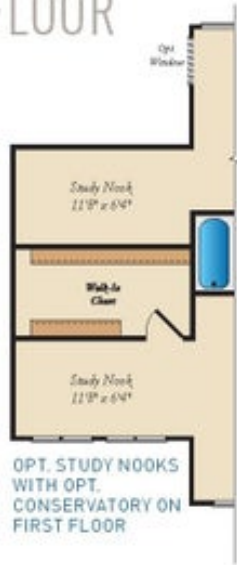
This home is currently under construction. Sq Ft is approximate. Photos are for representation only. For more information, and for a full list of included features, contact our New Home Sales Consultants.

FIRST FLOOR

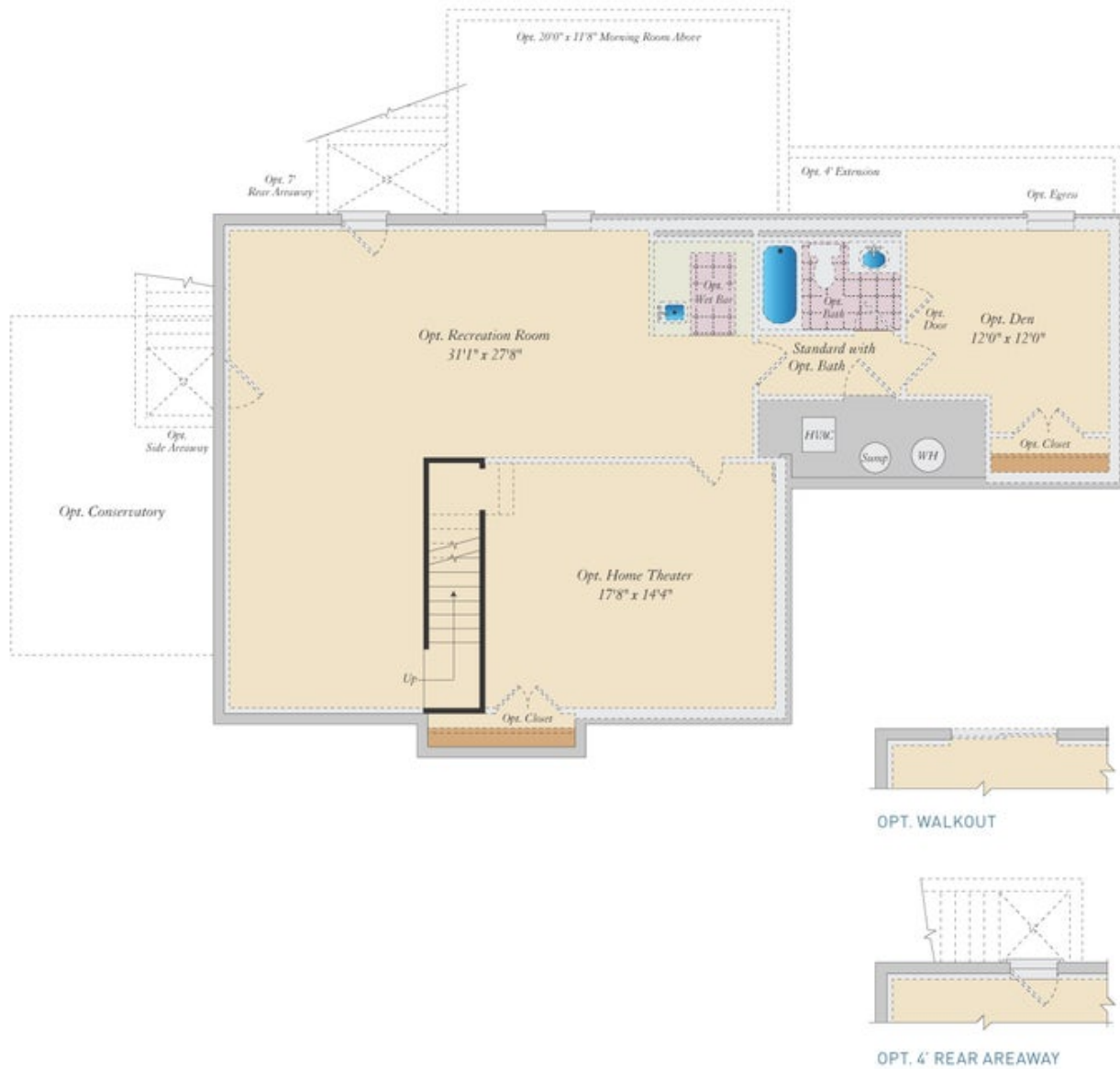


Brick/stone fronts, chimneys, bay windows, keystones, exterior trim, garage doors, light fixtures, dormers, and gables shown on elevations are optional features. Actual product specifications may vary in dimension or detail from these drawings. This insert is for illustrative purposes only and is not part of the legal contract. All dimensions are approximate. Many available options are not shown.

SECOND FLOOR



BASEMENT



Brick/stone fronts, chimneys, bay windows, keystones, exterior trim, garage doors, light fixtures, dormers, and gables shown on elevations are optional features. Actual product specifications may vary in dimension or detail from these drawings. This insert is for illustrative purposes only and is not part of the legal contract. All dimensions are approximate. Many available options are not shown.