



CRAFTSMAN COLLECTION
EMORY II - CRAFTSMAN
FOR SALE IN PRINCE GEORGE'S, MD

QUESTIONS? ASK CATHARINE
(301) 517-7314



4 - 5 Beds

2.5 - 4.5 Baths

2,858 - 5,431 Sq Ft

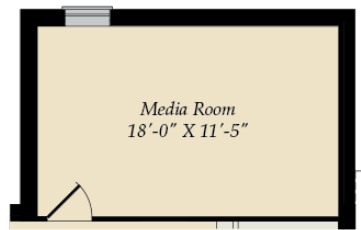
COMMUNITY CONTACT

12508 LUSBYS LANE
BRANDYWINE, MD 20613
NONE
NONE

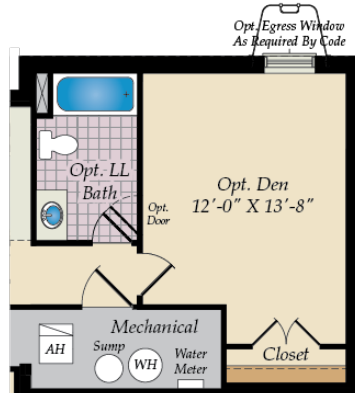
The popular Emory II Craftsman plan is a single family home starting at 2,962 square feet, with options to expand up to 5,375 square feet of living space. The home has a two car garage and many elevations, including brick and stone combination fronts and craftsman styles. Inside, the home comes standard with 4 bedrooms and 2.5 baths with the option to add an additional bedroom and full bath in the basement. This dream home offers many upgrades such as a gourmet kitchen, stone or modern fireplace and a grand owner suite with optional spa bath. Choose from hundreds of features to personalize this home and make it your own.



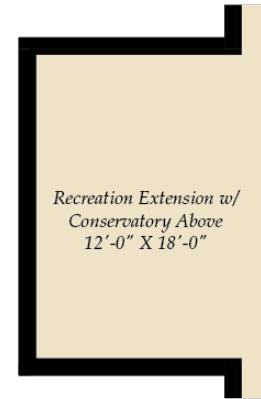
BASEMENT



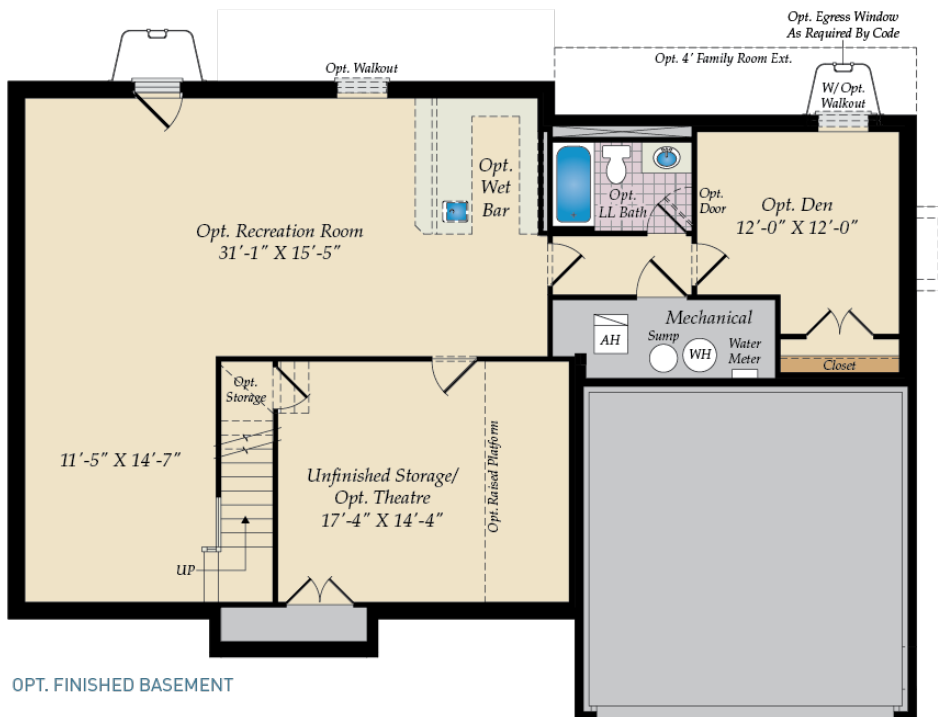
OPT. MEDIA ROOM W/MORNING ROOM ABOVE



OPT. DEN EXTENSION W/GREAT ROOM EXT. ABOVE



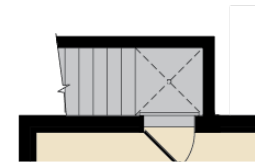
OPT. REC. EXTENSION W/ CONSERVATORY ABOVE



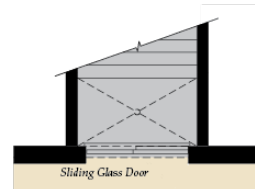
OPT. FINISHED BASEMENT



OPT. WALKOUT BASEMENT

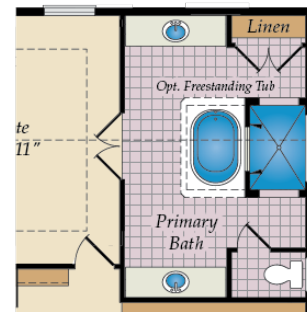
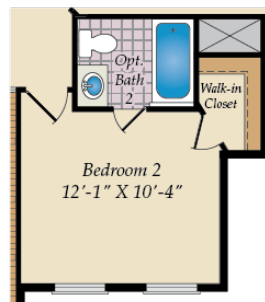
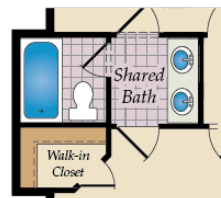
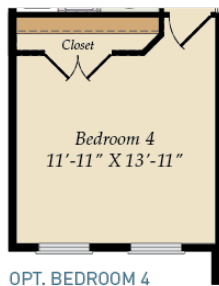
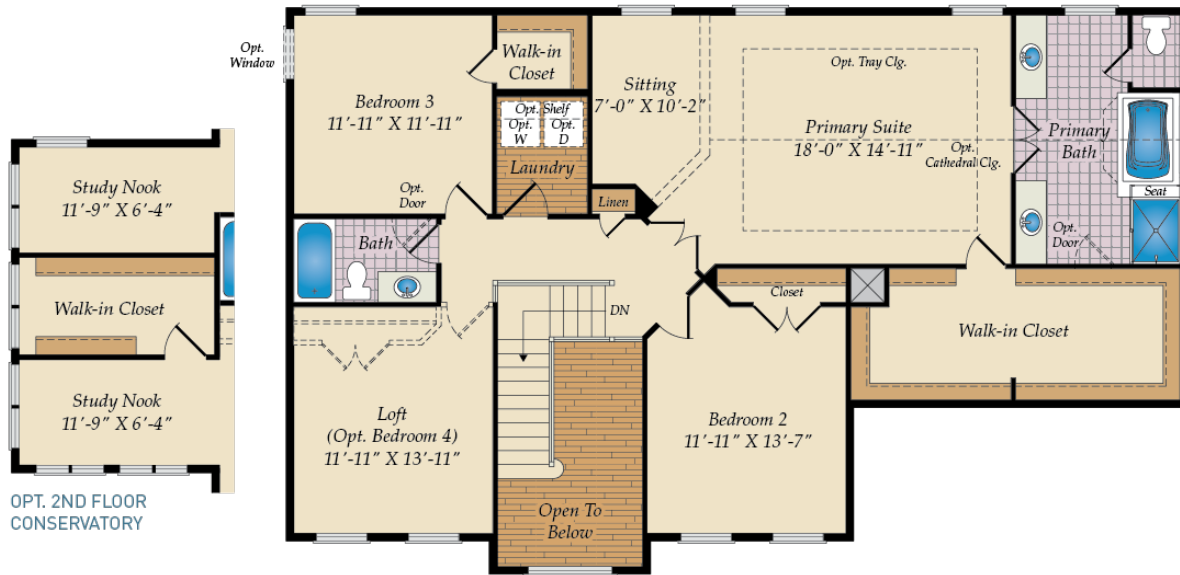


OPT. SINGLE AREAWAY

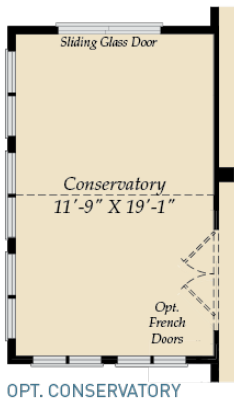


OPT. DOUBLE AREAWAY

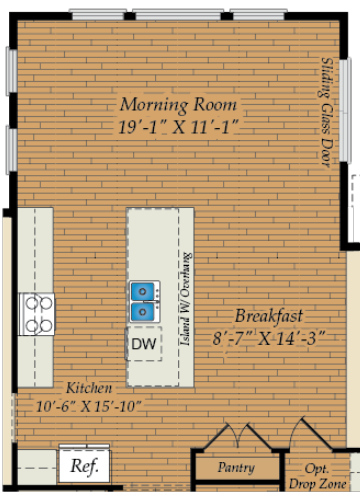
SECOND FLOOR



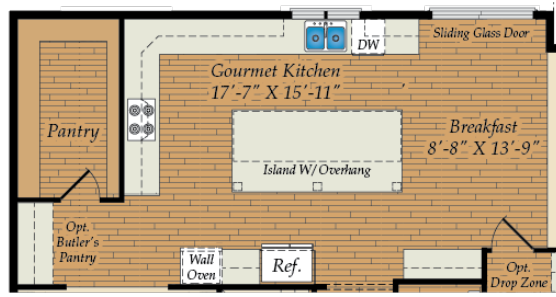
FIRST FLOOR



OPT. 2-CAR SIDE LOAD GARAGE



OPT. MORNING ROOM



OPT. GOURMET KITCHEN

Brick/stone fronts, chimneys, bay windows, keystones, exterior trim, garage doors, light fixtures, dormers, and gables shown on elevations are optional features. Actual product specifications may vary in dimension or detail from these drawings. This insert is for illustrative purposes only and is not part of the legal contract. All dimensions are approximate. Many available options are not shown.

