



4 Beds

3.5 Baths

2974 Sq Ft

ADDRESS

5139 KINGS PINNACLE DRIVE - LOT 26
KINGS MOUNTAIN, NC 28086

Enjoy the privacy and serenity of this wooded 1.1 acre home site located in the Kings Pinnacle community. The Norman plan is a great family plan with a giant loft! This particular home comes complete with 4 Bedrooms and 3.5 Bathrooms. In addition to the standard features, highlights of this open-concept home include:

- 2 Car side-load garage
- Additional Sunroom
- Added full bath to 4th bedroom
- Gas fireplace in great room
- Gourmet kitchen with spacious island
- Back deck with beautiful private backyard

Photos of similar home are for representation only and may show options or upgrades not included in this home. See New Home Sales Consultant for a complete list of included features.

FIRST FLOOR

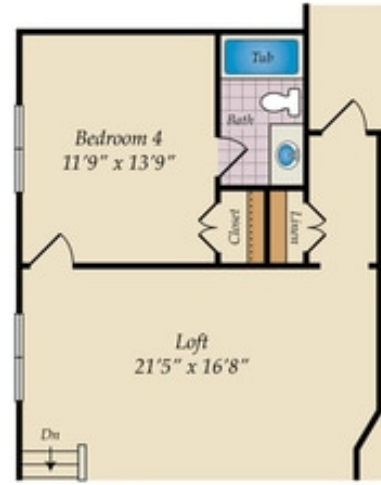


OPT. SUN ROOM



OPT. SCREEN PORCH

SECOND FLOOR



OPT. ATTIC

