

**3 Beds**

**3.0 Baths**

**2160 Sq Ft**

**ADDRESS**

807 PARC TOWNES DRIVE - HOMESITE 27  
WENDELL, NC 27591

Move-In Ready! This premium Linville townhome overlooks the golf course with amazing views. The plan comes with all the standard features including a 1-car garage and open main-level floor plan. This home also comes with these luxurious options:

- Large deck to enjoy scenic golf course views
- Upgraded cabinets and hardware
- Kitchen backsplash
- Vaulted ceiling in primary bedroom
- Ceramic tile in primary bath
- Finished rec room and powder room on lower level

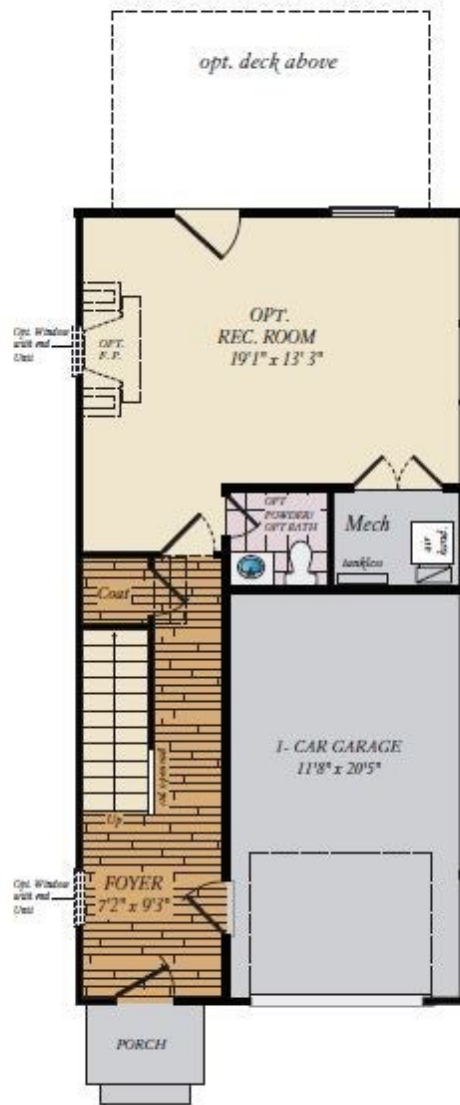
Some photos have been virtually staged to better showcase the true potential of rooms and spaces in the home. Contact our New Home Sales Consultants for a full list of included features.

## Home Elevation



Brick/stone fronts, chimneys, bay windows, keystones, exterior trim, garage doors, light fixtures, dormers, and gables shown on elevations are optional features. Actual product specifications may vary in dimension or detail from these drawings. This insert is for illustrative purposes only and is not part of the legal contract. All dimensions are approximate. Many available options are not shown.

# LOWER LEVEL



FIRST FLOOR



## SECOND FLOOR

