

**4 Beds****3.5 Baths****2422 Sq Ft****ADDRESS**816 PARC TOWNES DRIVE - HOMESITE 53
WENDELL, NC 27591

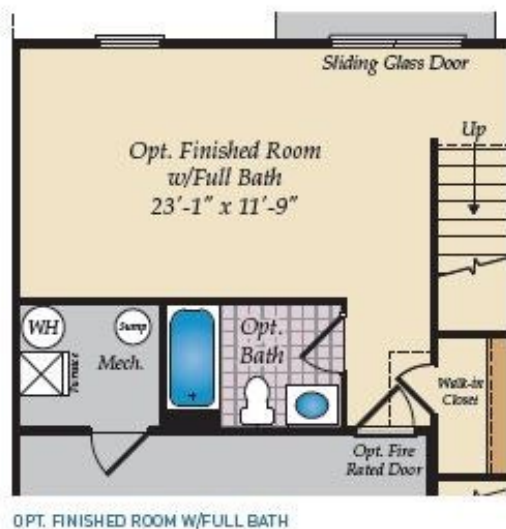
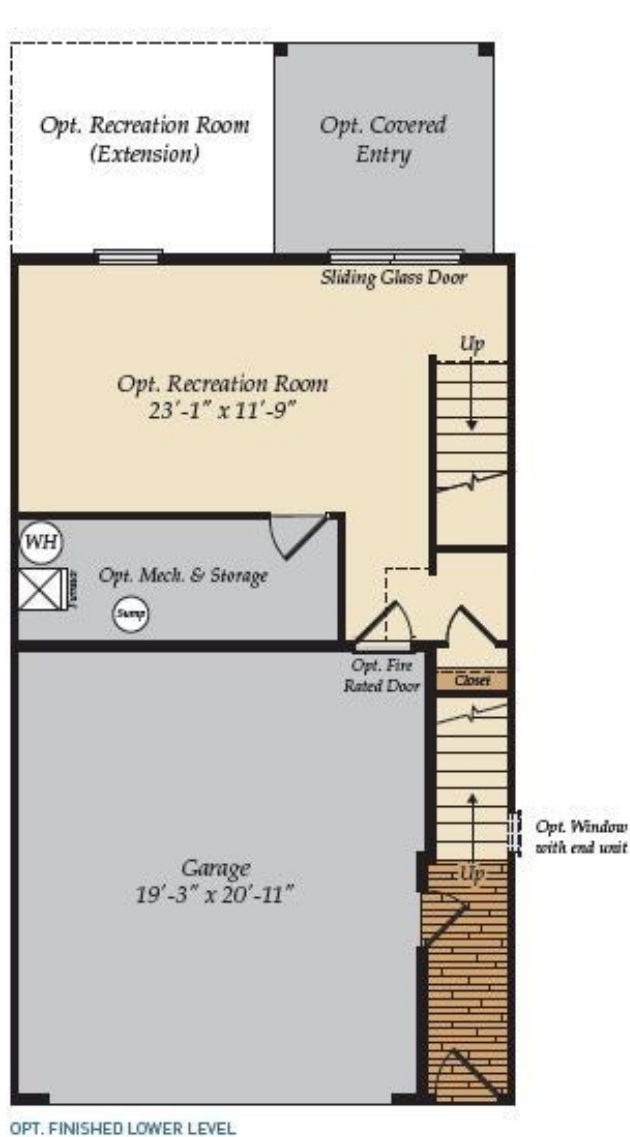
Move-In Ready! This Pamlico end-unit townhome comes equipped with all the standard features such as a 2-car garage and open main-level floor plan. In addition, this home comes with the following premium options included:

- Finished bedroom and full bath on lower level
- Large deck off main living area
- Oak stairs and rails
- Upgraded cabinets and hardware
- Upgraded quartz countertops and kitchen backsplash
- Ceramic tile in primary bath

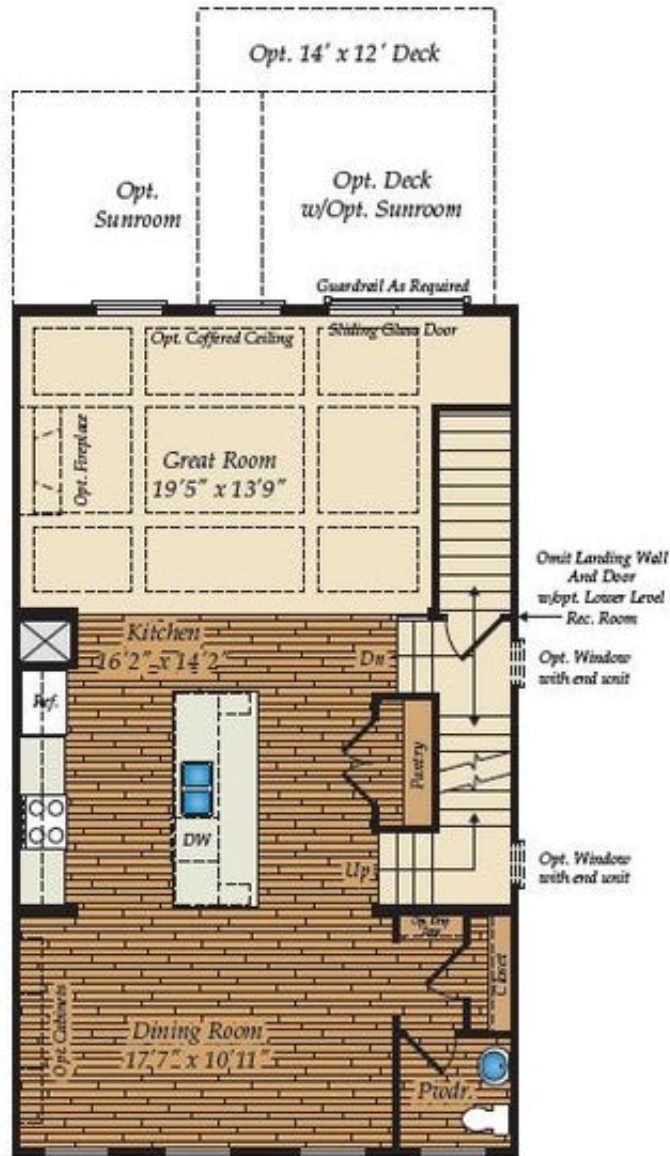
Some photos have been virtually staged to better showcase the true potential of rooms and spaces in the home. Contact our New Home Sales Consultants for a full list of included features.

Home Elevation

LOWER LEVEL



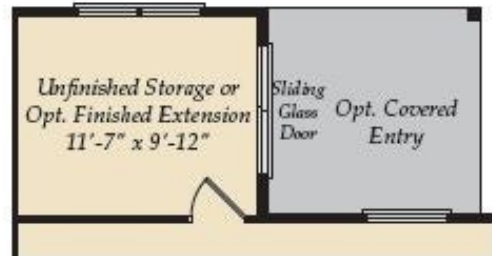
FIRST FLOOR



SECOND FLOOR



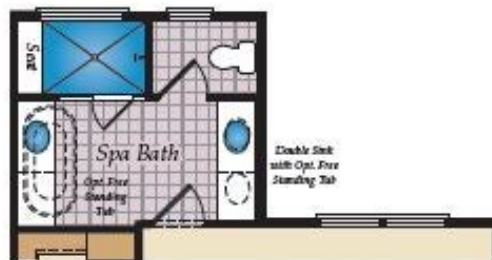
OTHER OPTIONS



OPT. LOWER LEVEL EXTENSION
(ONLY WITH SUNROOM)



OPT. SUNROOM IN THE FIRST FLOOR PLAN
(INCLUDES LOWER LEVEL EXTENSION)



OPT. SECOND FLOOR ONLY W/SUNROOM AND
LOWER LEVEL EXTENSION