

3 Beds

2.5 Baths

1784 Sq Ft

ADDRESS

851 PARC TOWNES DRIVE - HOMESITE 10
 WENDELL, NC 27591

Limited time offer - buy now, and receive a 4.875% interest rate!* Coming December 2024! This Linville townhome comes equipped with all the standard features such as a 1-car garage and open main-level floor plan. In addition, this home comes with the following premium options included:

- Large, screened porch off main living area
- Electric fireplace in main living area
- Upgraded cabinets and hardware
- Upgraded granite countertops and kitchen backsplash
- Quartz countertops in all full baths

Some photos have been virtually staged to better showcase the true potential of rooms and spaces in the home. Contact our New Home Sales Consultants for a full list of included features.

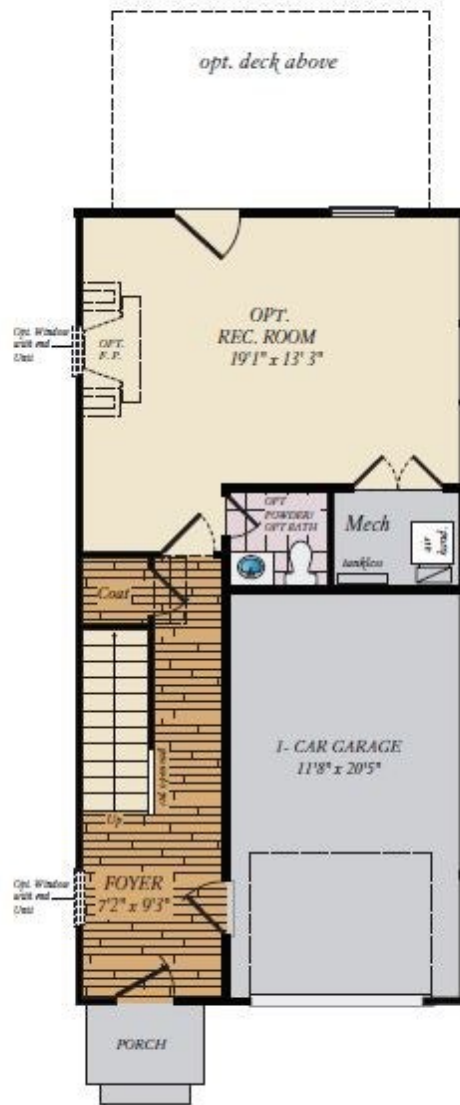
*Special financing rate offered by Caruso Homes when the eligible home is ...

Home Elevation



Brick/stone fronts, chimneys, bay windows, keystones, exterior trim, garage doors, light fixtures, dormers, and gables shown on elevations are optional features. Actual product specifications may vary in dimension or detail from these drawings. This insert is for illustrative purposes only and is not part of the legal contract. All dimensions are approximate. Many available options are not shown.

LOWER LEVEL



FIRST FLOOR



Brick/stone fronts, chimneys, bay windows, keystones, exterior trim, garage doors, light fixtures, dormers, and gables shown on elevations are optional features. Actual product specifications may vary in dimension or detail from these drawings. This insert is for illustrative purposes only and is not part of the legal contract. All dimensions are approximate. Many available options are not shown.

SECOND FLOOR

