

3 Beds

3.0 Baths

1784 Sq Ft

ADDRESS

853 PARC TOWNES DRIVE - HOMESITE 9
WENDELL, NC 27591

Limited time offer - buy now, and receive a 4.875% interest rate!* This Linville townhome comes equipped with all the standard features such as a 1-car garage and open main-level floor plan. In addition, this home comes with the following premium options included:

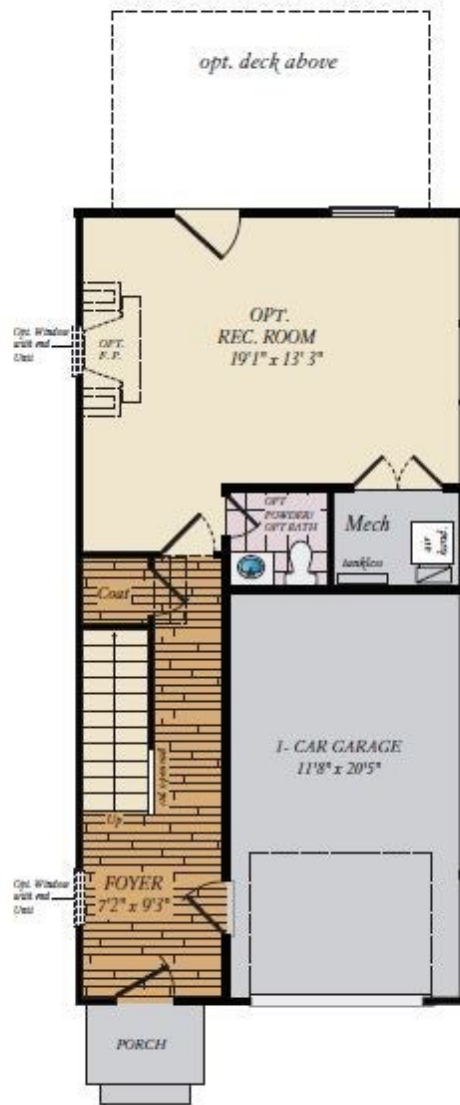
- Finished rec room and powder room on lower level
- Large Porch off main living area
- Oak stairs and rails
- Upgraded cabinet hardware
- Upgraded granite countertops and kitchen backsplash
- Upgraded hardwood flooring
- Ceramic tile in primary bath

Photos of similar home are for representation only and may show options or upgrades not included in this home. Some photos have been virtually staged to better showcase the true potential of rooms and spaces in the home. Contact our New Home Sales Consultants for a full list of included features.

*Special financing rate offered by Caruso Homes when the eligible home is financed with First Heritage Mortgage. Buyers must purchase a home with Caruso Homes and finance with First Heritage Mortgage with a VA or FHA mortgage loan to qualify. Financing example: 30-year VA fixed-rate loan of \$500,000 with a 0% down payment, ...

Home Elevation

LOWER LEVEL



FIRST FLOOR



Opt
w/1

SECOND FLOOR

