

3 Beds

3.0 Baths

1784 Sq Ft

ADDRESS

855 PARC TOWNES DRIVE - HOMESITE 8
WENDELL, NC 27591

This Linville townhome offers gorgeous golf course views and comes equipped with all the standard features such as a 1-car garage and open main-level floor plan. In addition, this home comes with the following premium options included:

- Large Screened Porch off main living area overlooking golf course
- Finished rec room and powder room on lower level
- Oak stairs and rails
- Upgraded cabinet hardware
- Upgraded granite countertops and kitchen backsplash
- Upgraded hardwood flooring
- Ceramic tile in primary bath

Photos of similar home are for representation only and may show options or upgrades not included in this home. Some photos have been virtually staged to better showcase the true potential of rooms and spaces in the home. Contact our New Home Sales Consultants for a full list of included features.

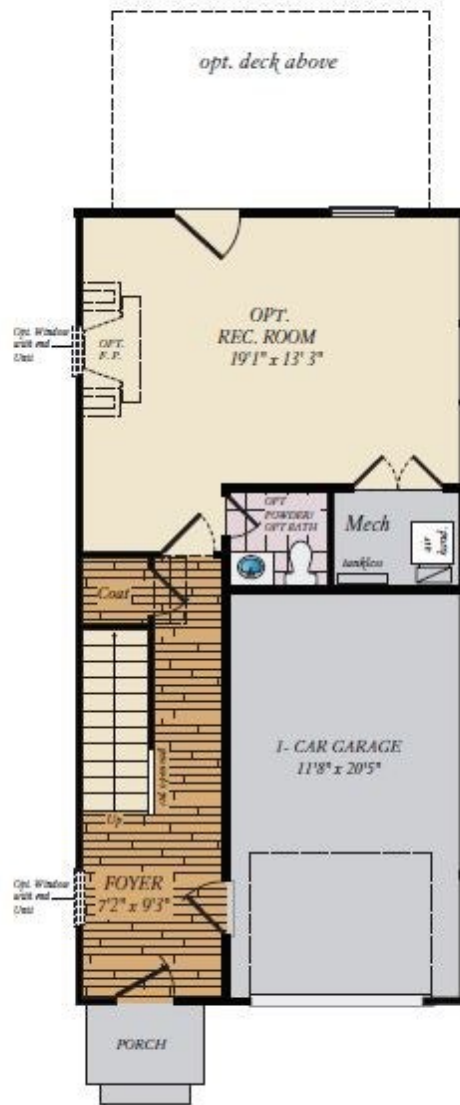
Home Elevation



or trim, garage doors, light fixtures, dormers, and gables shown o
product specifications may vary in dimension or detail from these drawings. This insert is for illustrative purposes only and is not part of the legal contract. All
dimensions are approximate. Many available options are not shown.



LOWER LEVEL



FIRST FLOOR



Opt
w/1

SECOND FLOOR

