



**4 Beds**

**3.0 Baths**

**2274 Sq Ft**

**ADDRESS**

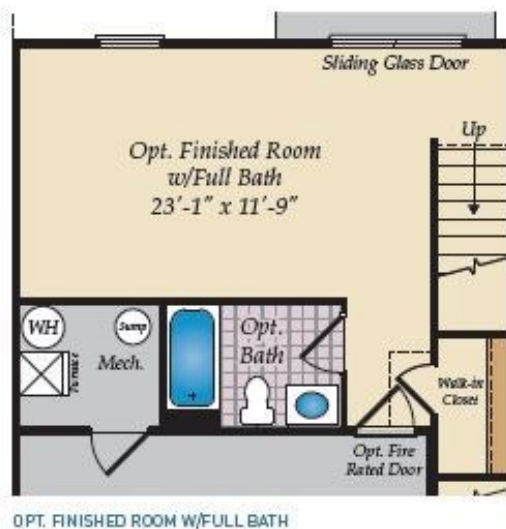
857 PARC TOWNES DRIVE - HOMESITE 7  
WENDELL, NC 27591

This premium Pamlico townhome comes with all the standard features including a **2-car garage** and open main-level floor plan. This home also comes with these luxurious options:

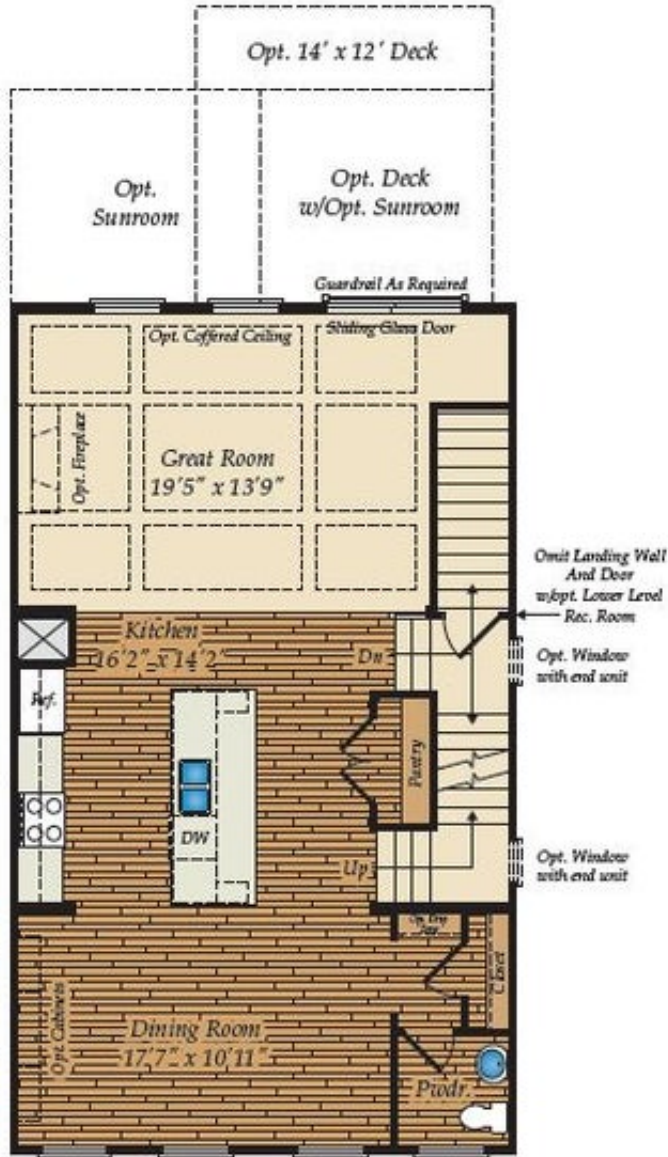
- Large deck with Golf Course View
- Upgraded cabinets and hardware
- Kitchen backsplash
- Vaulted ceiling in primary bedroom
- Ceramic tile in primary bath
- Finished rec room and powder room on lower level

Photos of a similar home are used for representation only and may show options/featured that are not included in the price of this home. Contact our New Home Sales Consultants for a full list of included features.

LOWER LEVEL



FIRST FLOOR



# SECOND FLOOR



## OTHER OPTIONS



OPT. LOWER LEVEL EXTENSION  
(ONLY WITH SUNROOM)



OPT. SUNROOM IN THE FIRST FLOOR PLAN  
(INCLUDES LOWER LEVEL EXTENSION)



OPT. SECOND FLOOR ONLY W/SUNROOM AND  
LOWER LEVEL EXTENSION