

3 Beds

2.5 - 3 Baths

1,784 - 2,160 Sq Ft

COMMUNITY CONTACT

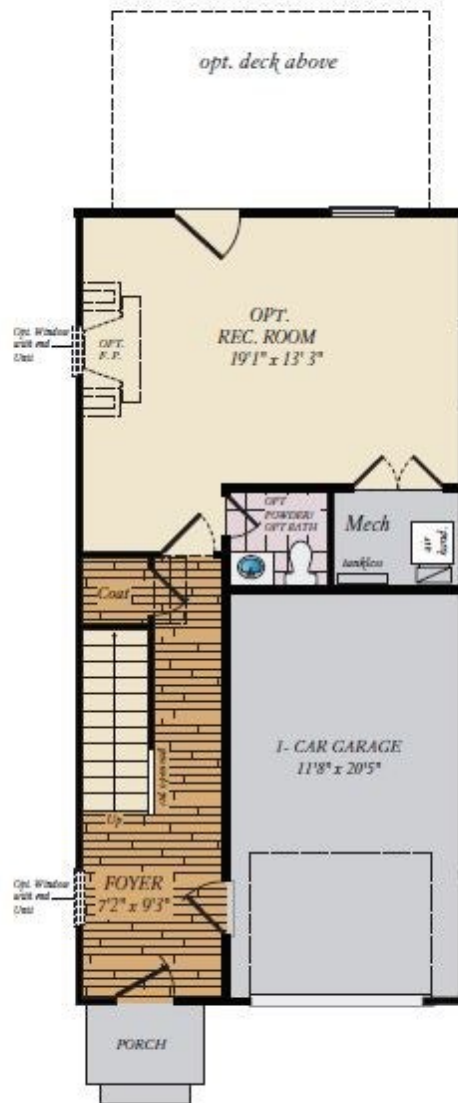
801 PARC TOWNES DRIVE (GPS:
 INTERSECTION OF WENDELL FALLS
 PKWY & JAKE MAY DR)
 WENDELL, NC 27591
 919-213-7778
 NONE

Welcome to our 3 story Linville townhome plan, soon to be available at our new Parc Townes at Wendell community! The front porch leads to the foyer and 1 car garage. The lower level features an optional recreational room with optional powder room and fireplace. The recreational room can also be changed to a 4th bedroom with full bath. The stairs lead to the very open first floor. The kitchen has a large island, optional kitchen backsplash, spacious pantry and stainless steel appliances, and opens directly into the dining room. There is a giant great room with an optional fireplace. A powder room and coat closet are also located on the first floor. The second floor is very customizable. It features an owner's suite with an optional vaulted ceiling and walk in closet. The owners bath comes with a shower but has the option of a tub and shower combo. There are two more, generously sized bedrooms on the first floor and a full bath with tub and shower combo. The configuration of the second floor can be changed in many ways including- the owners closet can be extended, the third bedroom can be removed, making the second bedroom larger ...

Available Elevations



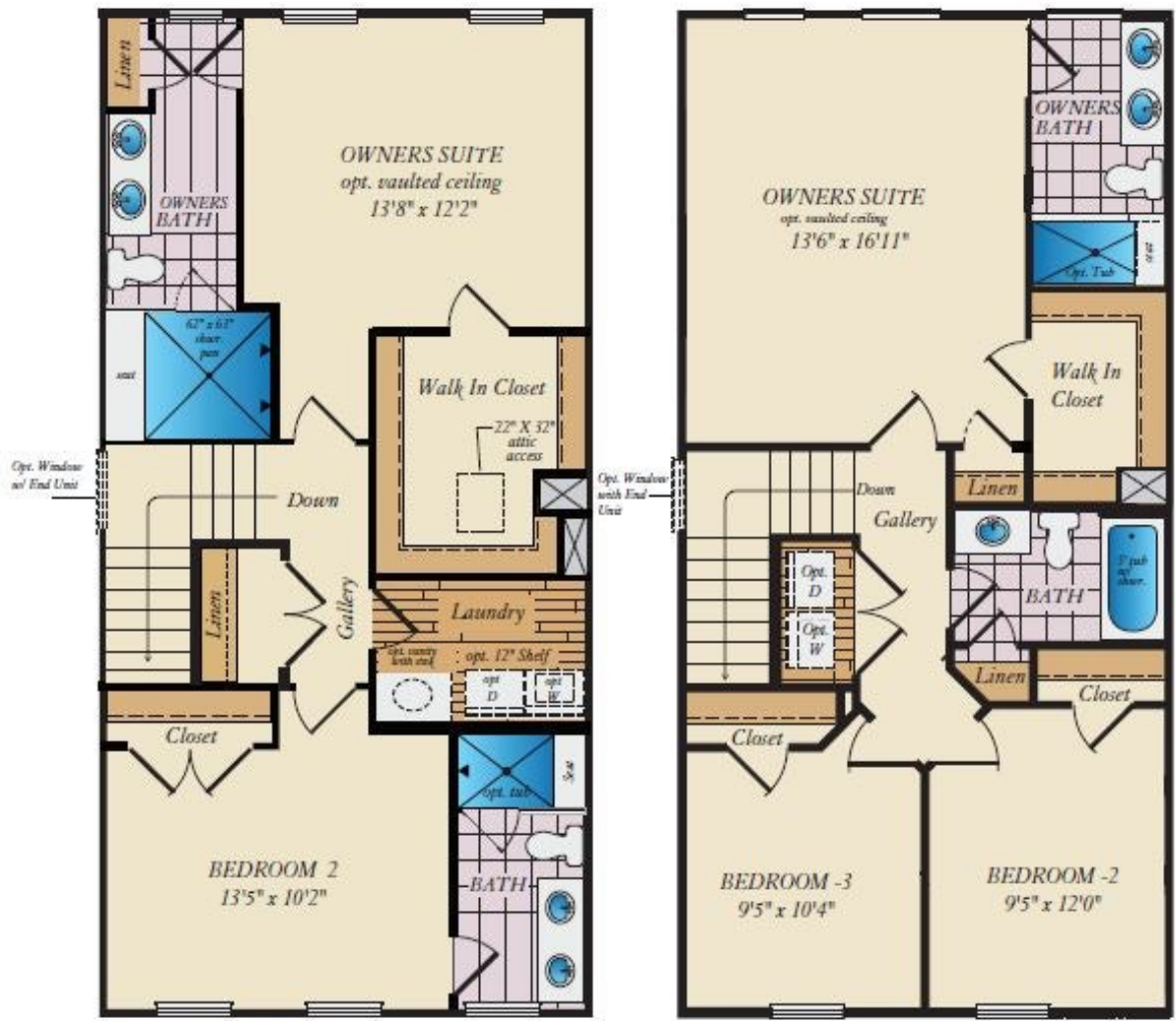
LOWER LEVEL



FIRST FLOOR



SECOND FLOOR



OPT. DUAL OWNERS SUITES

Brick/stone fronts, chimneys, bay windows, keystones, exterior trim, garage doors, light fixtures, dormers, and gables shown on elevations are optional features. Actual product specifications may vary in dimension or detail from these drawings. This insert is for illustrative purposes only and is not part of the legal contract. All dimensions are approximate. Many available options are not shown.

