



4 - 5 Beds

2.5 - 4 Baths

3,328 - 5,600 Sq Ft

COMMUNITY CONTACT

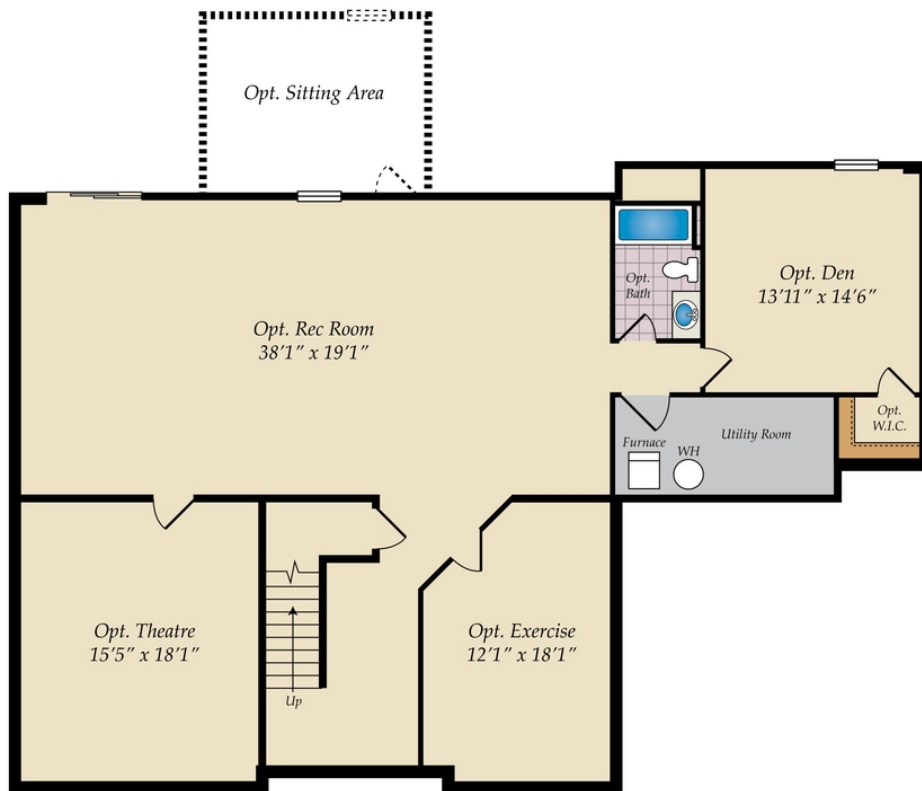
1012 MOSS ROAD
ZEBULON, NC 27597
NONE
NONE

The Lexington II has it all. This beautiful estate home has a spacious dining room and home office on either side of the stunning 2 story foyer. The main level features an open floor plan, great for entertaining, and a first floor owners suite with an amazing spa bath and our largest walk-in closet. It has 3 more bedrooms upstairs and an expansive loft. With options to add an amazing outdoor living space, a large bonus room, a finished walk-in attic and more, this home has everything a family could need.

Available Elevations

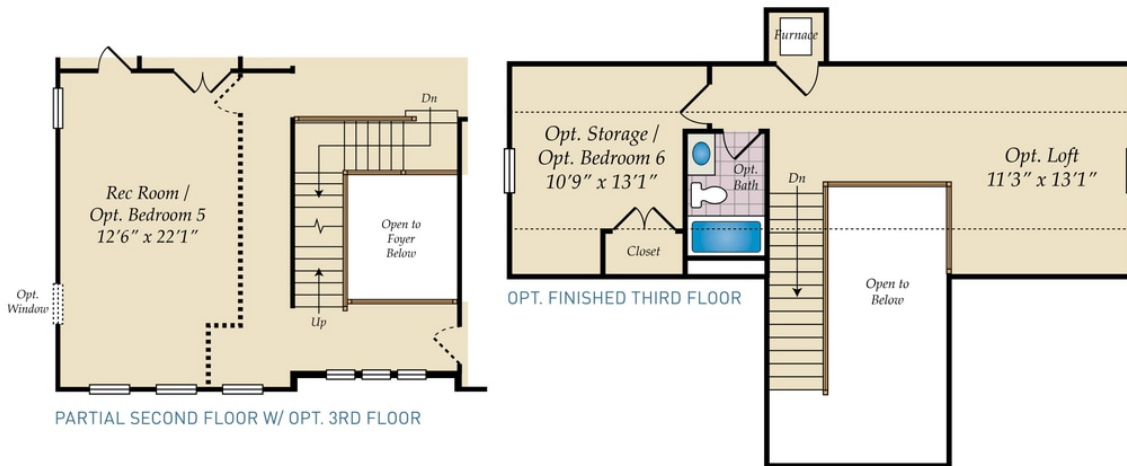
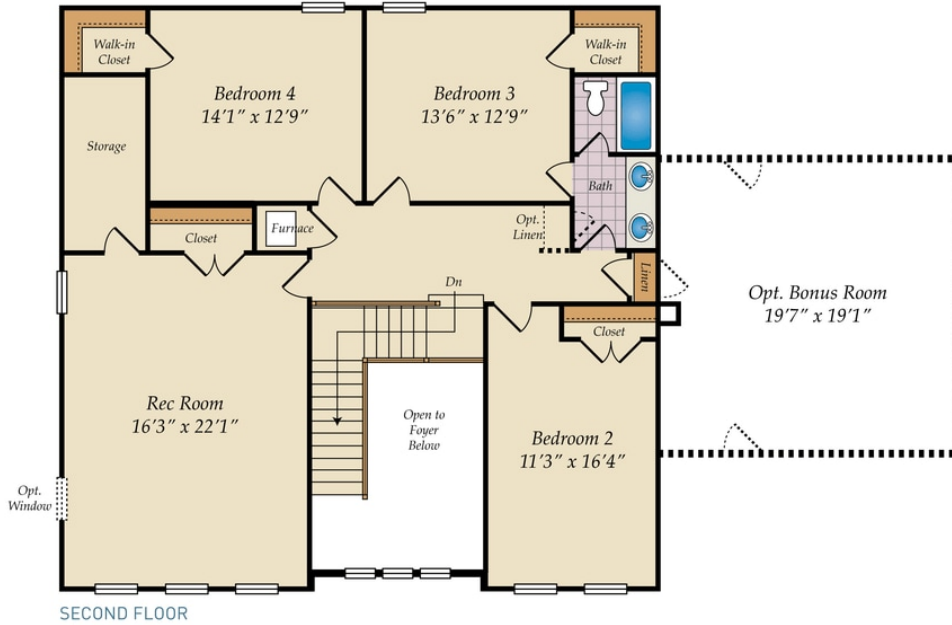


BASEMENT

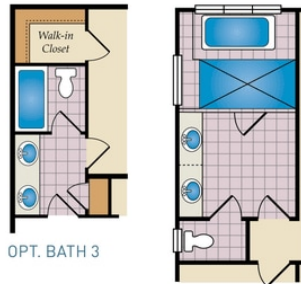


OPT. FINISHED BASEMENT

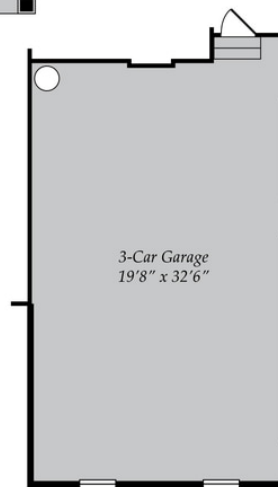
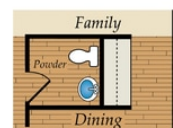
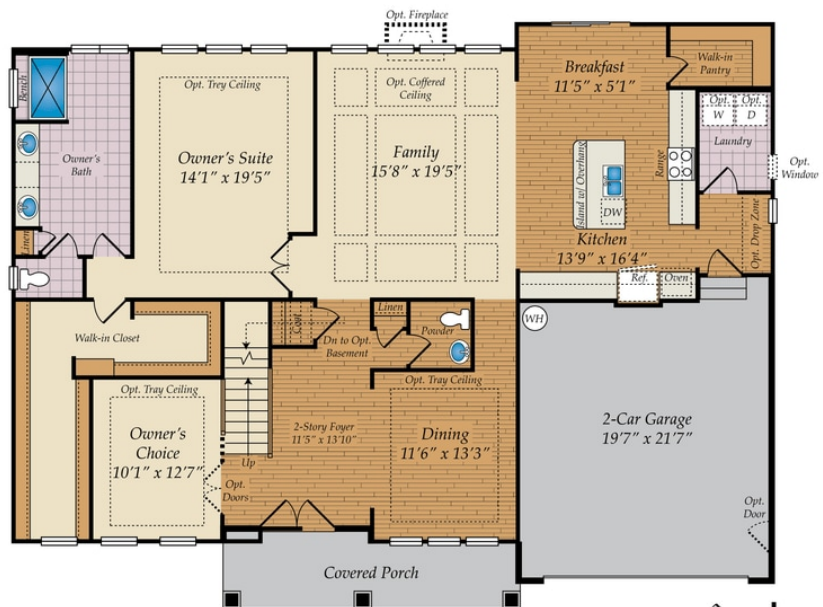
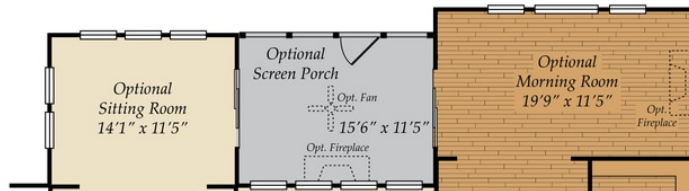
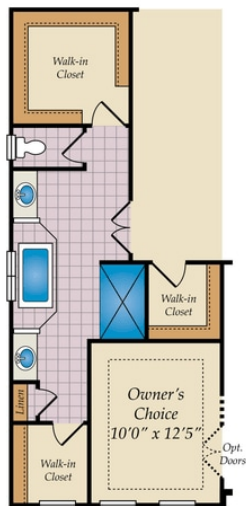
SECOND FLOOR AND OPT. THIRD FLOOR



FIRST FLOOR



ALTERNATE OWNER'S BATH



Brick/stone fronts, chimneys, bay windows, keystones, exterior trim, garage doors, light fixtures, dormers, and gables shown on elevations are optional features. Actual product specifications may vary in dimension or detail from these drawings. This insert is for illustrative purposes only and is not part of the legal contract. All dimensions are approximate. Many available options are not shown.

